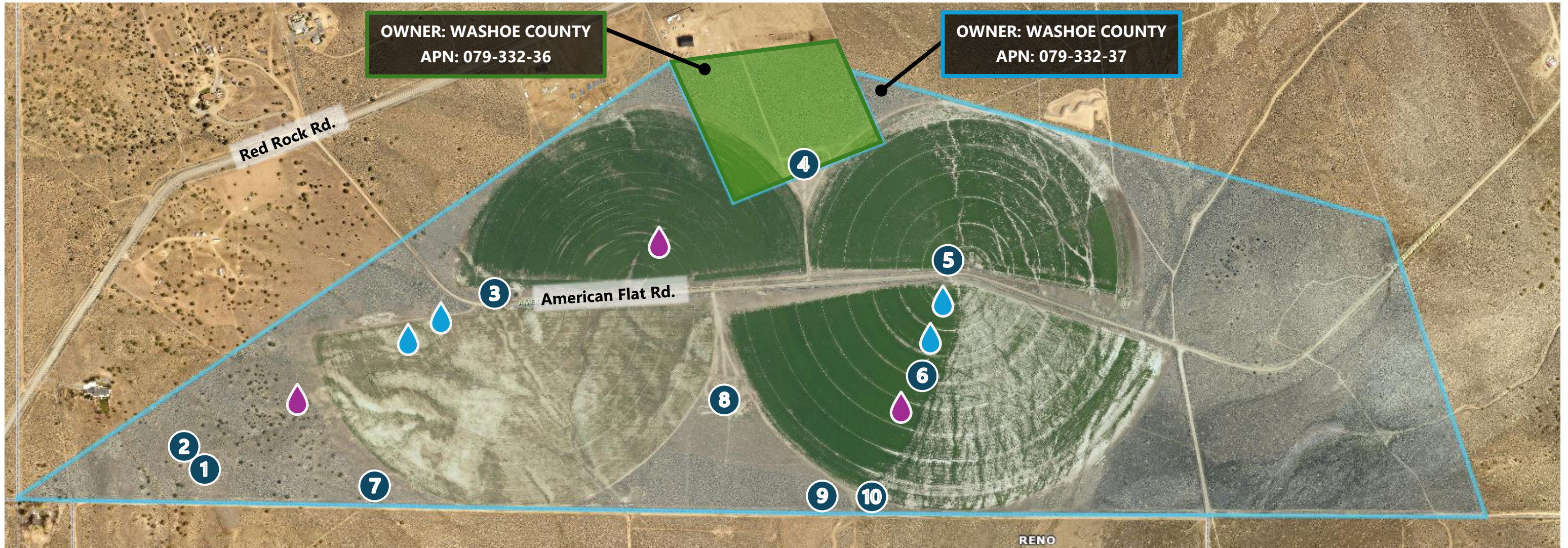


## AMERICAN FLAT FARM PROPERTY TRANSFER REQUEST

The OneWater Nevada Advanced Purified Water (APW) Facility at American Flat is an initiative to diversify the region’s water supply and prove up a technology that can be used elsewhere in the Truckee Meadows in the future to further increase water resources for the region. This project will store approximately 2,000 acre-feet (AFA) annually of APW underground, which will provide an important off-river resource to increase the community’s drought resiliency, maximize the efficient use of limited Truckee River resources for the region, and provide a long-term effluent management option to limit discharges to Swan Lake. Truckee Meadows Water Authority (TMWA) will issue will-serve letters for the 2,000 AFA as a new water supply, which will supplement the existing water resources in the North Valleys. The project consists of improvements at the Reno-Stead Water Reclamation Facility, an advanced purified water facility utilizing ozone / biological activated carbon treatment, transmission to the American Flat aquifer site, tanks, and injection and extraction wells. Due to the complexity of the injection and extraction well infrastructure, there is a need for the TMWA to acquire APN **079-332-36** and **079-332-37**, as operators of the project facilities proposed on this property. The figure and legend below depict infrastructure needs on each parcel and approximate locations. Also enclosed is the current civil site design drawing.



### PROJECT INFRASTRUCTURE (LOCATIONS ARE APPROXIMATE)

- |  |                                       |                                       |                                    |                                       |                                    |
|--|---------------------------------------|---------------------------------------|------------------------------------|---------------------------------------|------------------------------------|
| <b>1</b> POLISHING AND FILTER BUILDING | <b>2</b> FINISHED WATER STORAGE TANKS | <b>3</b> INJECTION WELL BUILDING (R2) | <b>4</b> AGRICULTURAL STAGING AREA | <b>5</b> INJECTION WELL BUILDING (R3) | <b>MONITORING WELLS (EXISTING)</b> |
| <b>6</b> INJECTION WELL BUILDING (R1)  | <b>7</b> W. EXTRACTION WELL BUILDING  | <b>8</b> FLUSH WATER STORAGE BASIN    | <b>9</b> IRRIGATION FEED TANK      | <b>10</b> E. EXTRACTION WELL BUILDING | <b>MONITORING WELLS (NEW)</b>      |



