

# Washoe County Sheriff's Office

## CAB Data

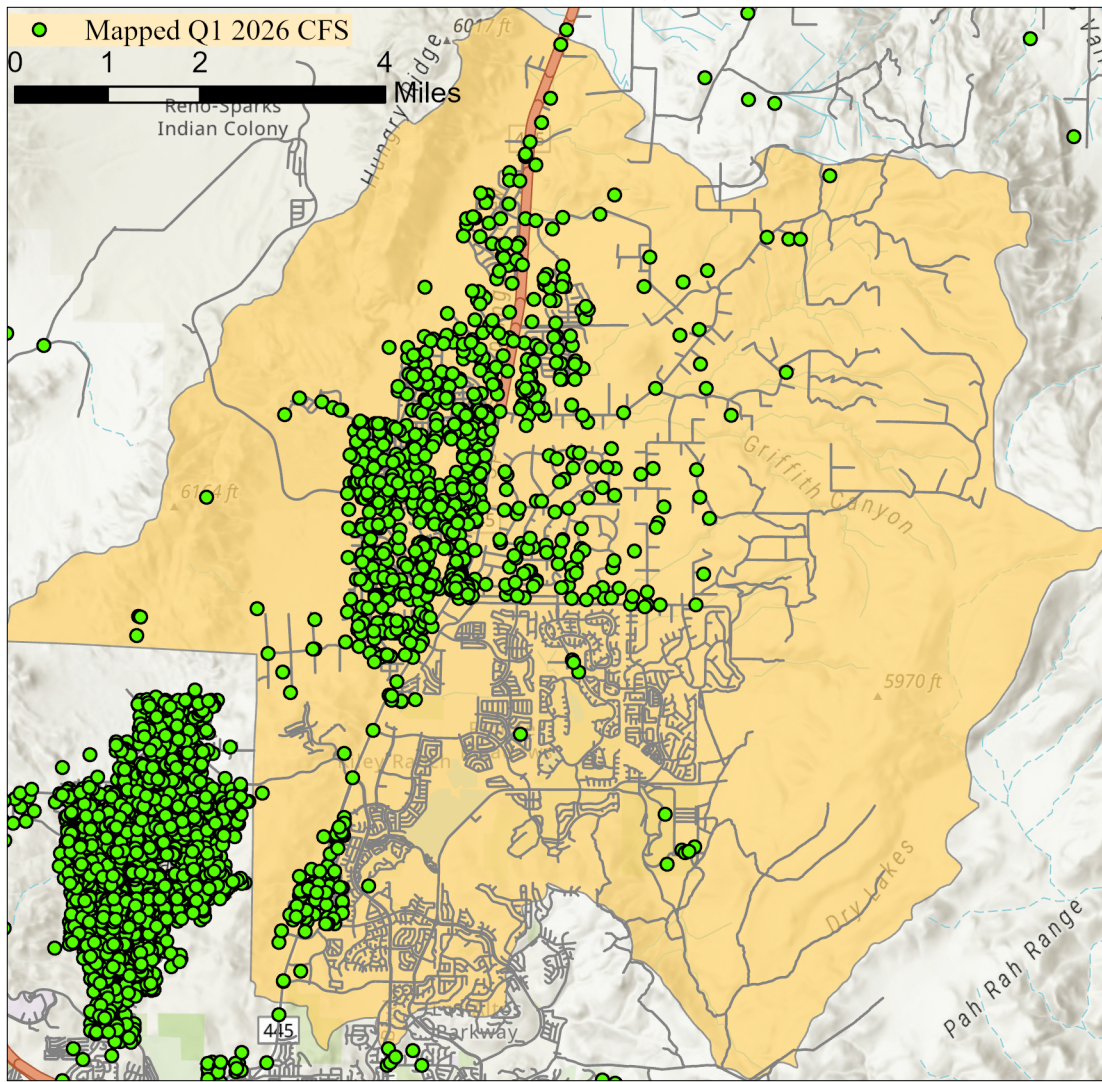
### Quarter 1 2026



Note: Calls for service (CFS) and case data reflect WCSO jurisdictions. CFS and cases are mapped with useable coordinates only.

Published: 4/9/2026

# Spanish Springs CAB



Offense Categories	Q1	3yr Avg	Up/Down	Offense Categories	Q1	3yr Avg	Up/Down
All Other Offenses	13	11	↑	Homicide Offenses	0	0	●
Animal Cruelty	0	0	●	Human Trafficking Offenses	0	0	●
Arson	1	0	↑	Kidnapping/Abduction	0	1	↓
Assault Offenses	20	16	↑	Larceny/Theft Offenses	10	10	●
Bad Checks	0	0	●	Liquor Law Violations	3	1	↑
Bribery	0	0	●	Motor Vehicle Theft	1	2	↓
Burglary	1	3	↓	Peeping Tom	0	0	●
Counterfeiting/Forgery	1	0	↑	Pornography/Obscene Material	1	1	●
Curfew/Loitering/Vagrancy	0	0	●	Prostitution Offenses	0	0	●
Destruction/Damage/Vandalism	6	21	↓	Robbery	0	0	●
Disorderly Conduct	1	2	↓	Sex Offenses	8	3	↑
Driving Under the Influence	10	7	↑	Sex Offenses, Nonforcible	1	0	↑
Drug Equipment Violations	1	1	●	Stolen Property Offenses	1	1	●
Drug/Narcotic Violations	0	1	↓	Trespass of Real Property	1	1	●
Drunkness	0	0	●	Weapon Law Violations	5	2	↑
Embezzlement	0	1	↓	<b>CFS Status</b>	<b>Q1</b>	<b>3yr Avg</b>	<b>Up/Down</b>
Extortion/Blackmail	2	2	●	Dispatched	463	384	↑
Family Offenses (Nonviolent)	3	4	↓	Initiated	1,312	586	↑
Fraud Offenses	23	13	↑	Unspecified	801	613	↑
Gambling Offenses	0	0	●	Total	2,576	1,583	↑

**Note:** Initiated CFS are defined by whether the created date and time listed in the CFS match the on scene date and time entered by dispatch. Additionally, follow up and assignment CFS types are included in this category. Dispatched CFS are defined by whether an on scene time is listed in the CFS, and the CFS is not initially defined as initiated. Unspecified CFS include CFS with no on scene date and time information.