

# 2024 Community Health Improvement Plan Annual Report

Rayona LaVoie, Director of Programs and Projects  
Office of the District Health Officer

# What is a CHIP?

## Key Elements

- Data-driven approach.
- Inclusion of community and partner perspectives.
- A systematic plan to improve health outcomes for a community.
- Based on local data, needs, and high-priority health issues.



# Why is the CHIP Important for Improving Health Outcomes?

## Data-Informed Strategy:

- Focuses on the specific health needs of the community.
- Uses evidence-based practices to identify and address issues.

## Collaborative Approach:

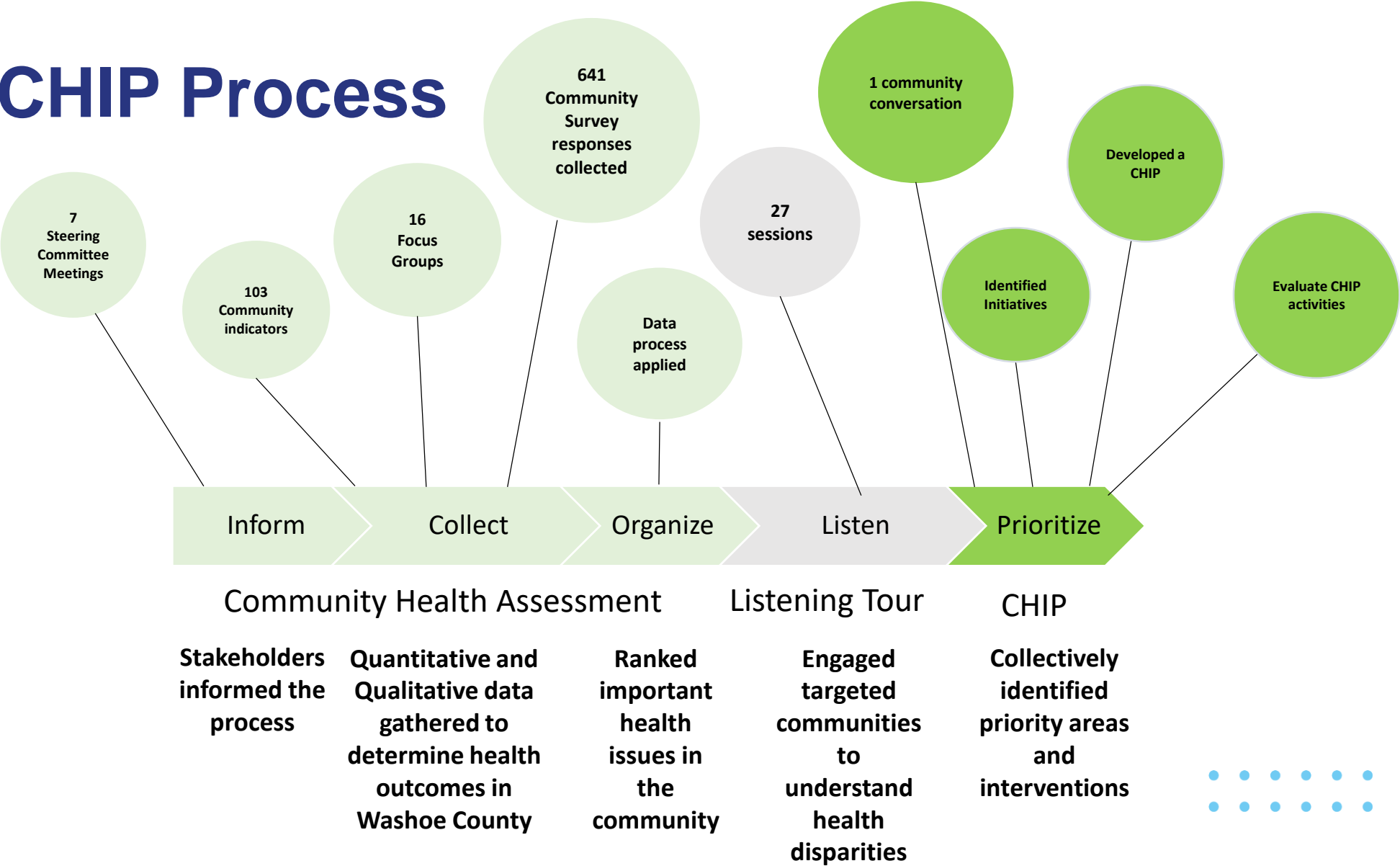
- Public health systems, healthcare providers, nonprofits, schools, and local government work together.
- Leverage expertise from various sectors for sustainable change.

## Coordinating Services:

- Coordinates services and programs across different sectors to improve continuity of care and the use of resources.
- Reduces duplication and ensures that community needs are met holistically.



# CHA-CHIP Process

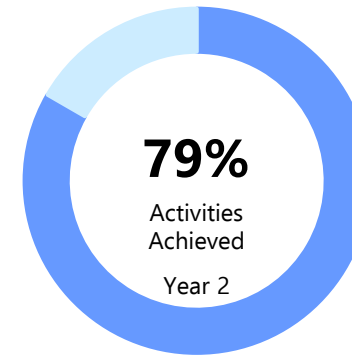
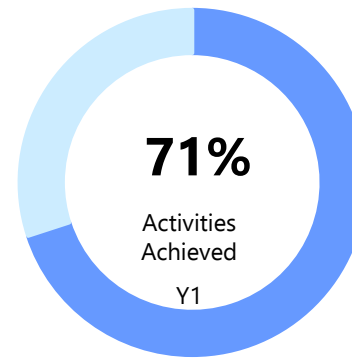


# Improving Health Outcomes Through Collaboration and Investment

Year 1 Implementation: Jan 1- Dec 31, 2023

Year 2 Implementation: : Jan 1- Dec 31, 2024

Year 3 Implementation: Jan 1- Dec 31, 2025



## Social Determinants of Health



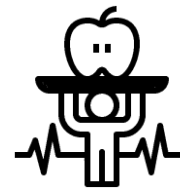
Status: ✓ Actions Achieved

## Access to Health Care



Status: ✓ Actions Achieved

## Preventative Health Behaviors



Status: 🔄 Action in Progress

## Mental Health

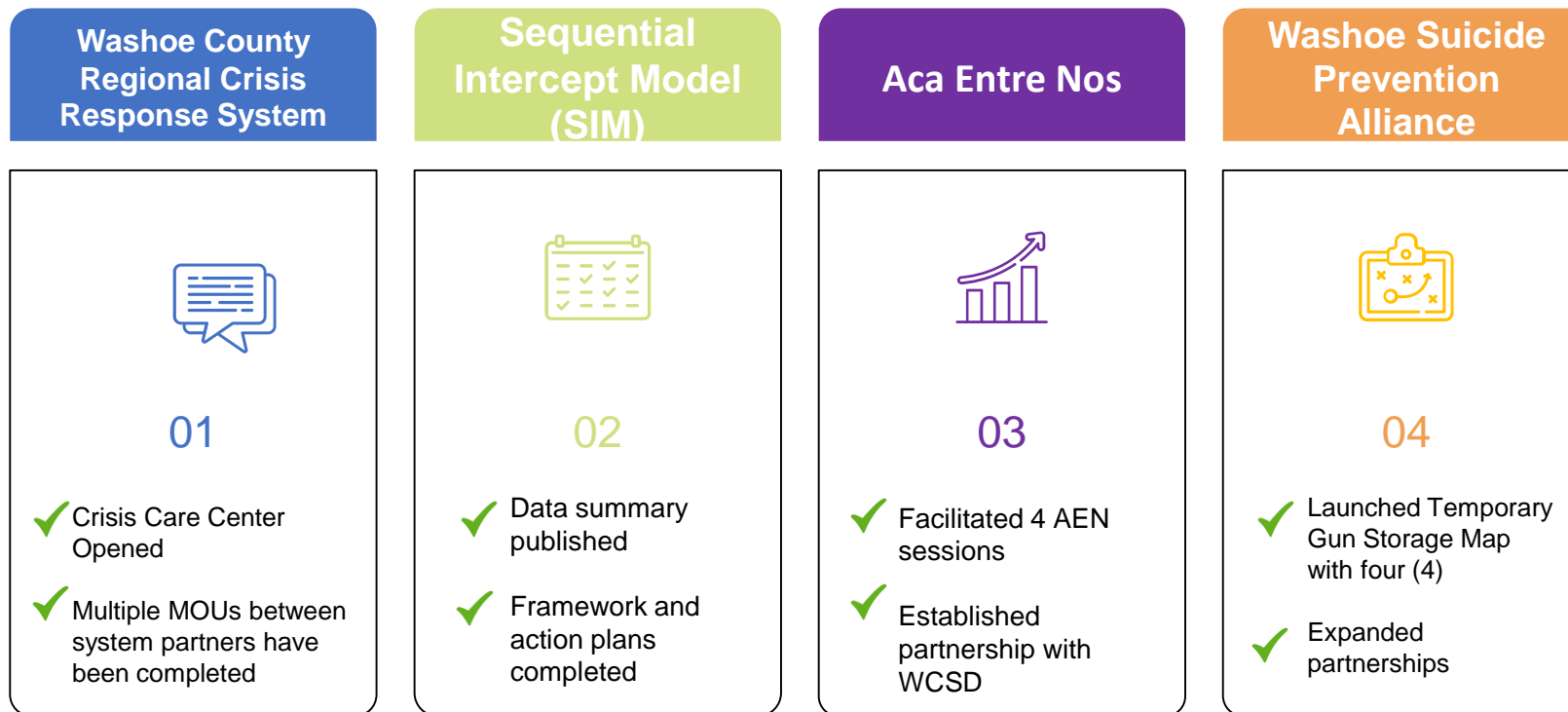


Status: 🔄 Action in Progress



# Improving Community Health Through Partnerships

## Priority Area: Mental Health







# Improving Community Health Through Partnerships

## Priority Area: Preventative Health Behaviors



# Improving Community Health Through Partnerships

Priority Area: Social Determinants of Health

Un Plan Financiero para Abrir Puertas	Language Access	Golden Groceries
  01  ✓ 10 Financial Literacy Classes Provided  ✓ 83 Community Members Reached	  02  ✓ Developed process for document translation  ✓ Improving service delivery through Wordly.ai and Language Line	  03  ✓ 682 Seniors served monthly increased in 2024   Fewer Seniors are skipping meals



# Improving Community Health Through Partnerships

Priority Area: Access to Health Care

## Family Health Festivals



01

- ✓ Over 400 households connected to resources
- 🔄 Expanding partnerships

## AB45 Loan Repayment



02

- ✓ Promoted resources to support the Nevada Health Equity & Loan Assistance (HEAL) Program

# Opportunities for Further Collaboration

1. Expand loan repayment options.
2. Improve multi-tiered systems of support to prevent youth crisis events.
3. Establishing prenatal care in the first trimester among minority populations.
4. Addressing substance use among pregnant and postpartum individuals.
5. Advance Community Health Worker models and paraprofessionals to deliver navigation and improved services in low-resource settings.
6. Improved coordination among nutrition partners to support Washoe County School District's Wellness Policy.
7. Increase prevention efforts to mitigate late-stage conditions.
8. Increase awareness of preventative health behaviors and their importance among minority populations.



# Questions?

NORTHERN NEVADA

# Public Health