



Sky Tavern Night Skiing Concerns

12065 BUMS GULCH



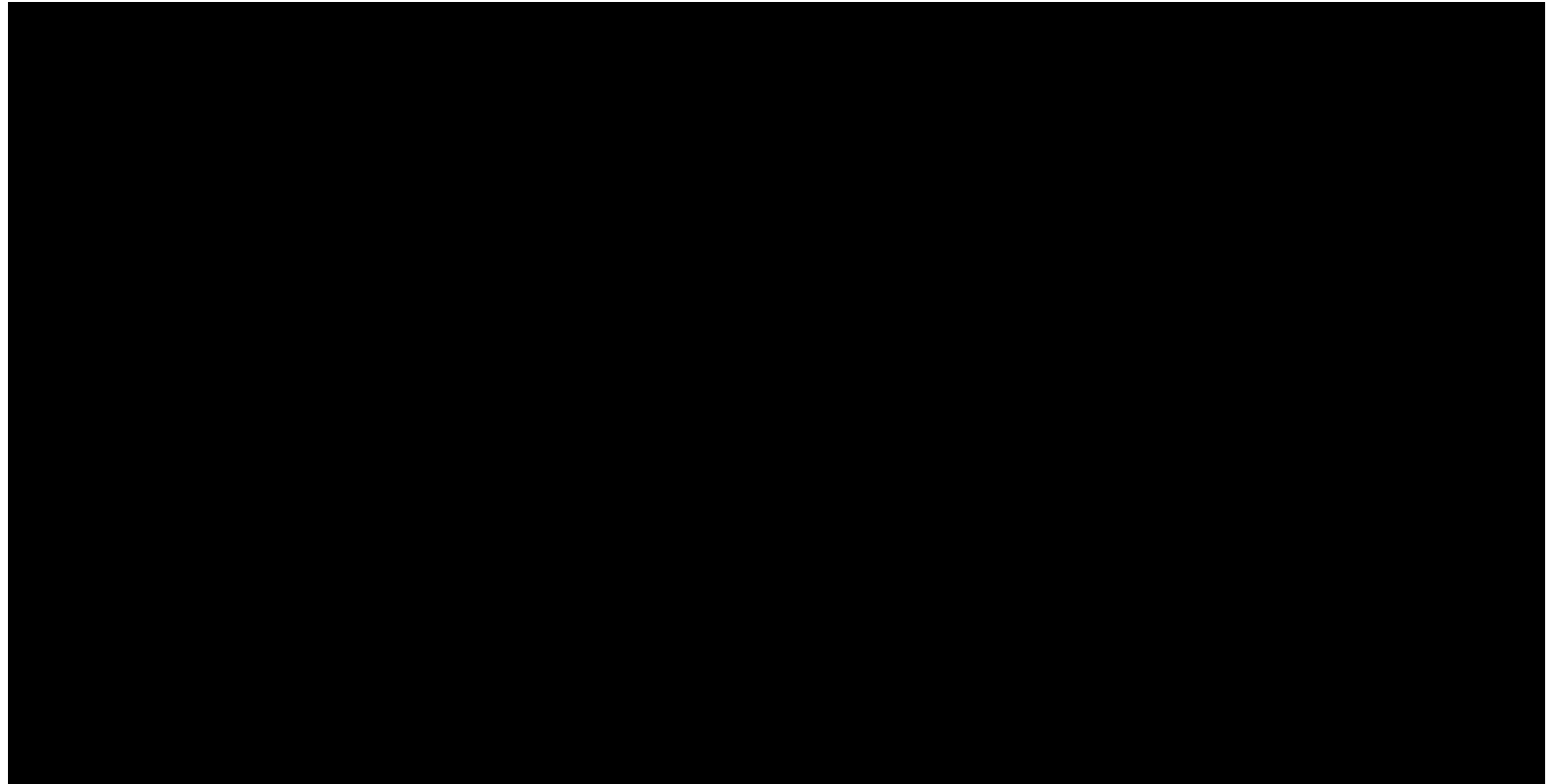
Mount Rose Property Owners Water Company

Residents living at the 14 properties on Bums Gulch Rd and Old Mt Rose Highway are connected by a shared water system. This small community, situated at nearly 8,000 feet in elevation, is composed mostly of year-round residents who are well-versed in mountain living conditions and environmental impacts. They experience firsthand the effects, both positive and negative of Sky Tavern operations.

United in their vision of environmental stewardship, responsible development, and opportunities for Washoe County youth, this group embodies a commitment to sustainable living and community values.

Goals of Sky Tavern

1. Increase Capacity for Junior Ski Program
 - 3,700 kids served. 200 families could not be accommodated.
2. Provide more Hill Time for Race Teams



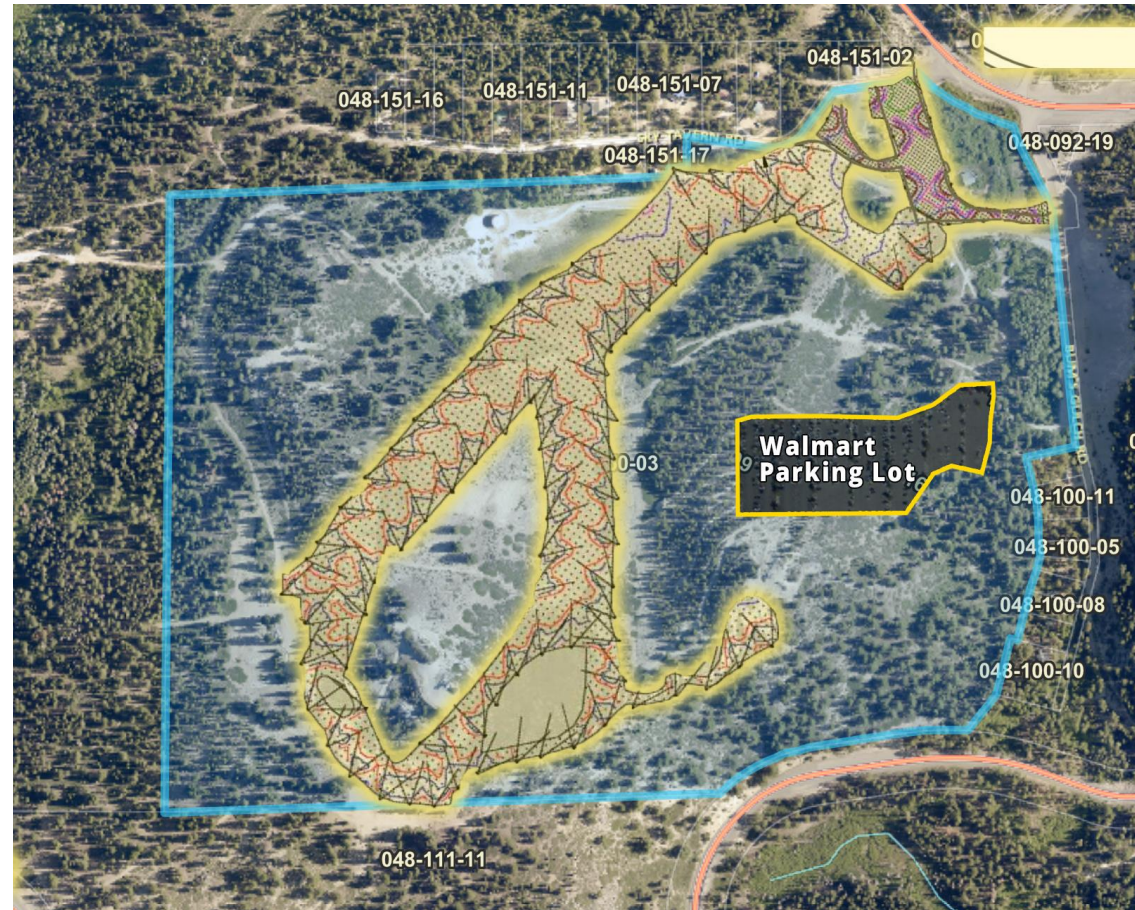
MRBPOWC Goals

1. Increase Capacity for Junior Ski Program
 - 3,700 kids served. 200 families could not be accommodated.
2. Provide more hill time for race teams
3. Maintain the Mt. Rose Scenic Byway
4. Maintain Dark Skies
5. Minimize or reduce environmental impacts
6. Protect the safety of the skiers both on the hill
7. Avoid traffic accidents for those traveling on Mt. Rose Highway
8. Define Operational Days
9. Assure permits are in place for new road after environmental assessment.

Sky Tavern Solution

Add Night Skiing

- Spend \$1.5 million on 77 light poles and 154 lights on the mountain
- Add 26 Additional lights for the parking lot.
- 13 Bullhorns added to the parking lot



MRBPOWC Concerns

These programs were put in place with significant research and consideration based on sound science.

Violation of Existing Programs

- Mount Rose Scenic Byway Corridor Management Plan
- Washoe County Regional Open Space and Natural Resource Management Plan
- Washoe Country General Plan – Forest Area Plan

The Mount Rose Scenic Byway Corridor Management Plan specifically outlines goals and parameters as it applies to lighting. The addition of night skiing will violate numerous items outlined in the Mount Rose Scenic Byway Corridor Management Plan.

Page 9: Visual Quality

Light pollution from street lights, parking lot lights, local signage, and development can interrupt the night skies that residents and visitors enjoy.

Page 101: Principles of Geotourism

Conservation of Resources: Encourage businesses to minimize water pollution, solid waste, energy consumption, water usage, landscaping chemicals, and overly bright nighttime lighting.

Page 106: Washoe County Regional Open Space and Natural Resource Management Plan

Visual and Scenic Character

Goal 1: Protect the region's visual and scenic resources.

Goal 2: Preserve and protect the visual integrity of our region's hillsides, ridges, and hilltops.

Goal 3: Preserve the remaining integrity of our region's dark night sky

Page 108: Washoe Country General Plan – Forest Area Plan

F.8.2 Washoe County will adopt further standards to enhance and maintain the value of the Corridor as a scenic area. At a minimum, these standards will address landscaping, building height, setback, lighting, and signage. The standards will limit the establishment of new commercial land uses, including those established by special use permit, on SR 431 between the intersections of Thomas Creek Parkway and Timberline Drive. Further standards will address the use of interpretive displays for travelers along the roadway. Signage may be lighted, but not in such a way that it impacts the dark sky goals of the County.

MRBPOWC Concerns



Northern Lights Over Sky Tavern

Maintain Dark Skies

(154) **40,000 lumen** lights are proposed.

(26) **20,250 Lumen** lights are proposed for the parking lot

(13) **Bullhorns** proposed for the parking lot.

The average car is 800-1,200 lumens.

13	[PART#] VS-S-BLH-R24-2-180-GV [DESCRIPTION] 2 @ 180 deg. Fixture Mount, Steel Bullhorn Bracket, Pole Top Mount, Hot-Dip Galvanized Finish, USA Engineered & Manufactured [COMMENTS] PARKING LOT BULLHORNS	\$299.00	\$3,887.00
26	[PART#] NF-SHS-120-40-MV-4-DB-SF [DESCRIPTION] 120W, NAFCO® Small SHX Shoebox LED Light Fixture, 20250 Lumens, 4000K, 120-277V Input VAC, Type 4 Distribution	\$499.00	\$12,974.00
154	[PART#] NF-SHM-250-40-MV-45-DB-SF-WHP7NP [DESCRIPTION] 250W, NAFCO® Medium SHX Shoebox LED Light Fixture, 40000 Lumens, 4000K, 120-277V Input VAC, 45° Medium Spot Distribution [COMMENTS] [DARK BRONZE][SLIPFITTER][WHP7NP][GLARE CUPS]	\$775.00	\$119,350.00

- **Astronomical Research:** Dark skies are essential for both amateur and professional astronomers. Nevada's clear, dark skies provide ideal conditions for conducting astronomical research.
- **Tourism:** Dark skies attract tourists interested in stargazing, astrophotography, and experiencing the natural night environment.
- **Wildlife Preservation:** Many species rely on natural light cycles for their behavior and reproduction.
- **Human Health:** Excessive artificial light can interfere with human circadian rhythms, potentially leading to sleep disorders and other health issues.
- **Energy Conservation:** Reducing light pollution can lead to lower energy consumption and costs.
- **Climate Change Mitigation:** Lowering energy use for lighting can help reduce greenhouse gas emissions.
- **Aesthetic Value:** Dark night skies offer a unique and awe-inspiring natural beauty that enhances the quality of life for residents and visitors alike. The view for 200,000 residents will be changed. Welcome to California.

MRBPOWC Concerns



Environmental Accountability

Sky Tavern has prioritized increasing access and recreation, leading to environmental degradation:

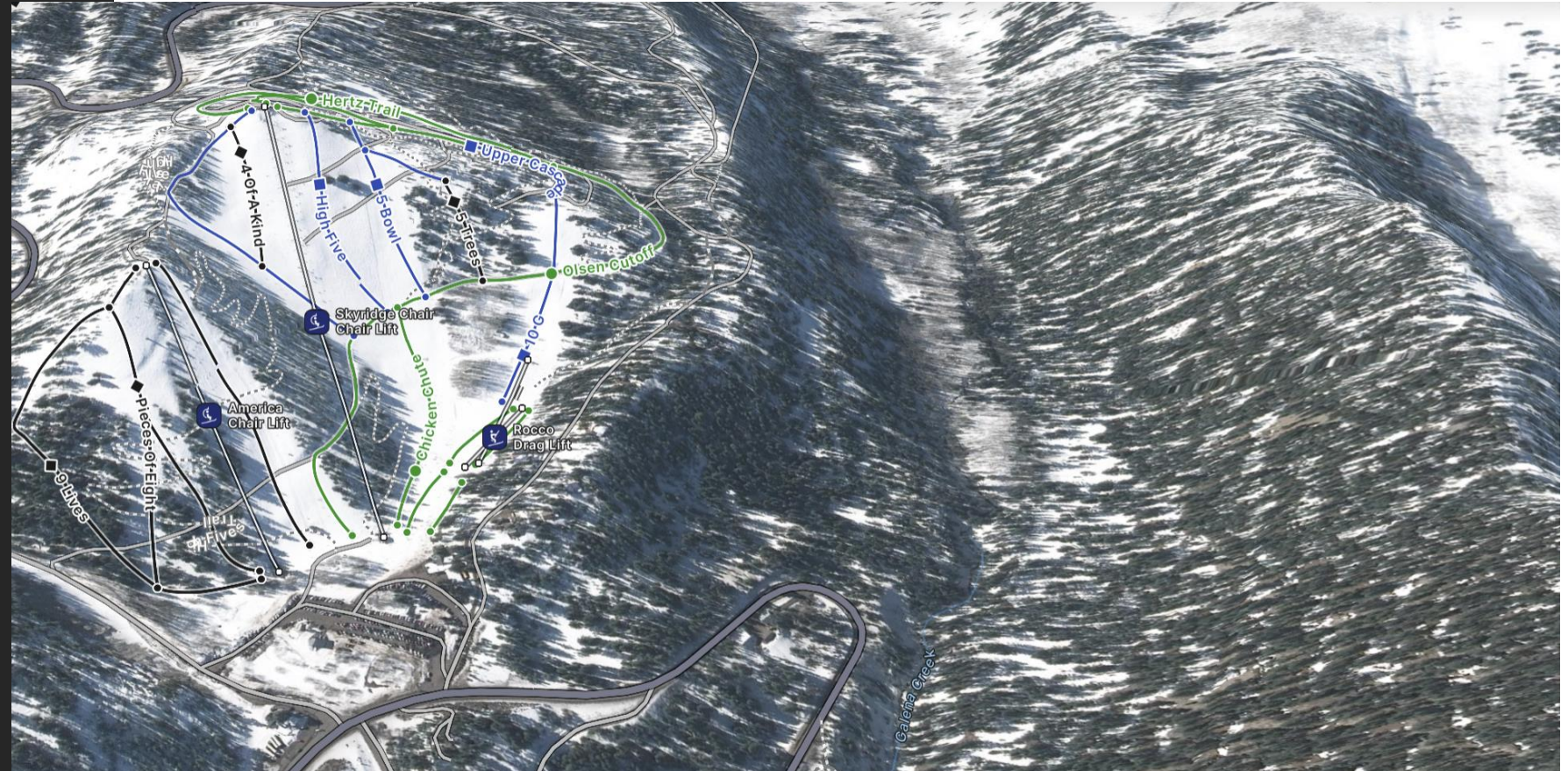
- 2016/2017: 4 acres of ski slope graded without permits or erosion control, affecting wetlands.
 - 2022/2023: Stream rerouted without erosion control, impacting water quality.
 - Continuous: Wetlands and streams dredged and covered without permits or best practices.
 - Ongoing: Mountain bike trails built without permits or erosion control.
 - 2022/2023: Wetland filled to extend road without permits or best practices.
- Environmental impacts include significant erosion, water quality decline, and disruption of wetland systems.
- Sky Tavern's practices compromise environmental sustainability and are inequitable compared to other local organizations.



MRBPOWC Concerns

Protect the safety of the skiers both on the hill

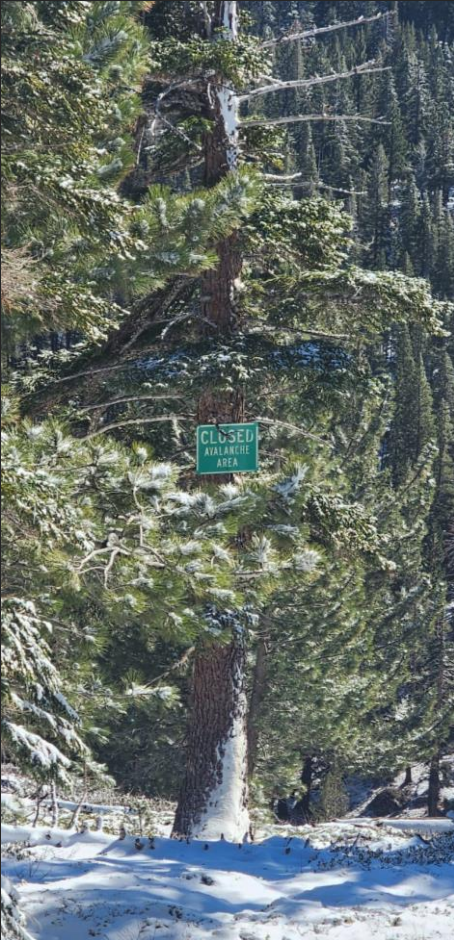
- Galena Creek Ravine



MRBPOWC Concerns

Protect the safety of the skiers both on and off hill

- Mt Rose Highway
- Avalanche Terrain



MRBPOWC Concerns

Hazards on Private Properties

- Propane Tanks
- Crevasse under the creeks
- Zip lines
- Downed trees
- Heavy equipment
- Power lines



Powerlines at knee level during winter



MRBPOWC Concerns

Driving on Mt Rose at Night

- New and inexperienced drivers are a danger to themselves and others.



MRBPOWC Concerns

West Coast Resorts that Discontinued Night Skiing

- Palisades Tahoe (formerly Squaw Valley), California
 - Park City Mountain Resort, Utah
 - Heavenly Mountain Resort, California
 - Northstar California Resort, California
 - Mt. Bachelor, Oregon
 - Silver Star Mountain Resort, British Columbia

Night Skiing programs ended due to operational costs, low demand, or logistical challenges associated with maintaining safe and well-lit slopes.

Project Failure due to high elevation conditions

- Ski Lighting programs fail at all major resorts
- Rime Ice



Proposed Lights

MRBPOWC Solutions

GOALS

1. Increase Capacity for Junior Ski Program
 - 3,700 kids served. 200 families could not be accommodated.
2. Provide more Hill Time for Race Teams

MRBPOWC met with Sky Tavern Senior Management and learned Capacity is limited by PARKING.

PARKING

The existing parking area is proposed to be repaved and restriped. There is no specific parking requirement for a destination ski resort in Washoe County's development code, however Section 410.10.2 requires 1 parking space required per employee. A striping plan is included with this application showing 191 spaces.

Capacity needs to be increased by 5.4% (200 families divided by 3,700)

191 Spaces. 5.4% increase is 10 spaces.

MRBPOWC Solutions

PARKING SOLUTIONS

Remove decrepit vehicles, trash & storage containers from the parking lot.

24 Spaces Gained. Capacity increased by 12.5%



MRBPOWC Solutions

PARKING SOLUTIONS

Limited Parking Passes & Car Pooling

Sky Tavern Management indicated that many families are driving 2 cars to accommodate just 1 or 2 children. Often two parents will drive separately.

- Limit ONE parking pass per family
- Charge if additional parking spots are needed.

Estimated 10 cars offset per day

Additional revenue earned for in-need families from parking revenue

5.4% increase in capacity met.

MRBPOWC Solutions

PARKING SOLUTIONS

Require bus participation and expand bus hours past 2:30 PM.

The typical school bus will accommodate 48 adult passengers (2 per seat) or 72 children (2nd grade or younger sitting 3 per seat)

- Park at Galena High School
- Assume 1 parent and 1 child per car
- 4 trips up in the AM
- 4 trips back in the PM

24 cars offset per trips.
4 trips up and 4 trips down.

**96 total parking spots saved. Parking Capacity
increased by 50.2%**

Longer Season

Thanks to the new 3-million gallon snowmaking system.

- Current season mid-January to mid-April
- Extend season to mid-December to mid-May
- Current season 28 weekend days.
- Extend season and open during Christmas vacation ads 22 days
- Define what and when operational aspects may run.

Season increased by 78.5%

Management indicated a run is 7 minutes.

New season increases total possible runs per person to 1,320



Photo taken May 10, 2024

MRBPOWC Solutions

Open Earlier for Race Training

Open at 7:30 AM

Currently skiing begins at 9 am.

- Safer Driving
- Safer Skiing
- Better snow conditions for race training
- Better rest for students vs. skiing until 9 pm
- Earliest sunrise is December 21 at 7:18 am
- Save \$1.5 million in capital improvements

75 skiable hours added

Racers can ski 642 more runs EACH per season.

(50 days x 1.5 hours x 8.5 runs per hour)

MRBPOWC Solutions

Summary of Increased Capacity Options

Currently 191 Spaces. 5.4% increase of 10 spaces is needed.

- Remove decrepit vehicles and trash: 24 Parking Spots 12.5% increase in capacity
- Limited Parking Passes: 10 Parking Spots 5.4% increase in capacity
- Added Bus Service: 96 Parking Spots 50.2% increase in capacity

TOTAL PARKING CAPACITY INCREASE: 130 Spots, 68%

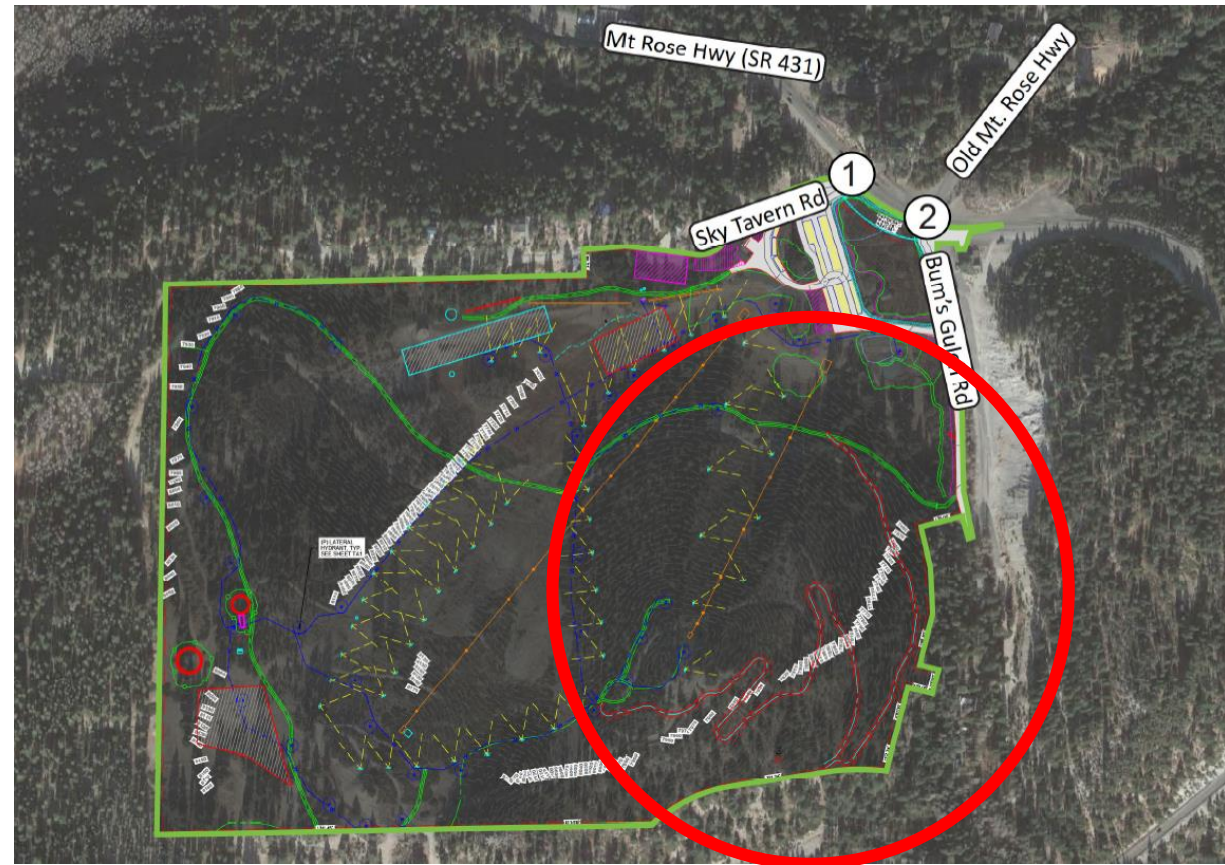
- Extend season & open during Christmas vacation: Adds 22 days, 78.5% increase.
- Open early for racers: 75 skiable hours added, 642 more runs per person, per season.

TOTAL ADDED: 229 Hours or 1,962 runs per skier

MRBPOWC Concern

Additional Concern Unpermitted Road

- The SUP indicates a road marked in red on page 59.
- This road does not exist.
- Proper permitting and environmental review and BMP plan is encouraged.



Alternatives



Alternative Uses For Funds

- Install a detachable high speed lift to accommodate mt. bikes. Fixed grip chairs go too fast in loading zones for loading bikes
- Improve and Restore the Lodge





MRBPOWC
Solutions

QUESTIONS?

