



Iveson Ranch Special Use Permit

**Washoe County
Board of County Commissioners
13 January 2026**

Special Use Permit



- Covers three areas:
 - Runway/Airstrip
 - Outdoor storage
 - Energetics
- Requested variation of standards:
 - Parking
 - Paving
 - Landscaping
 - Noise



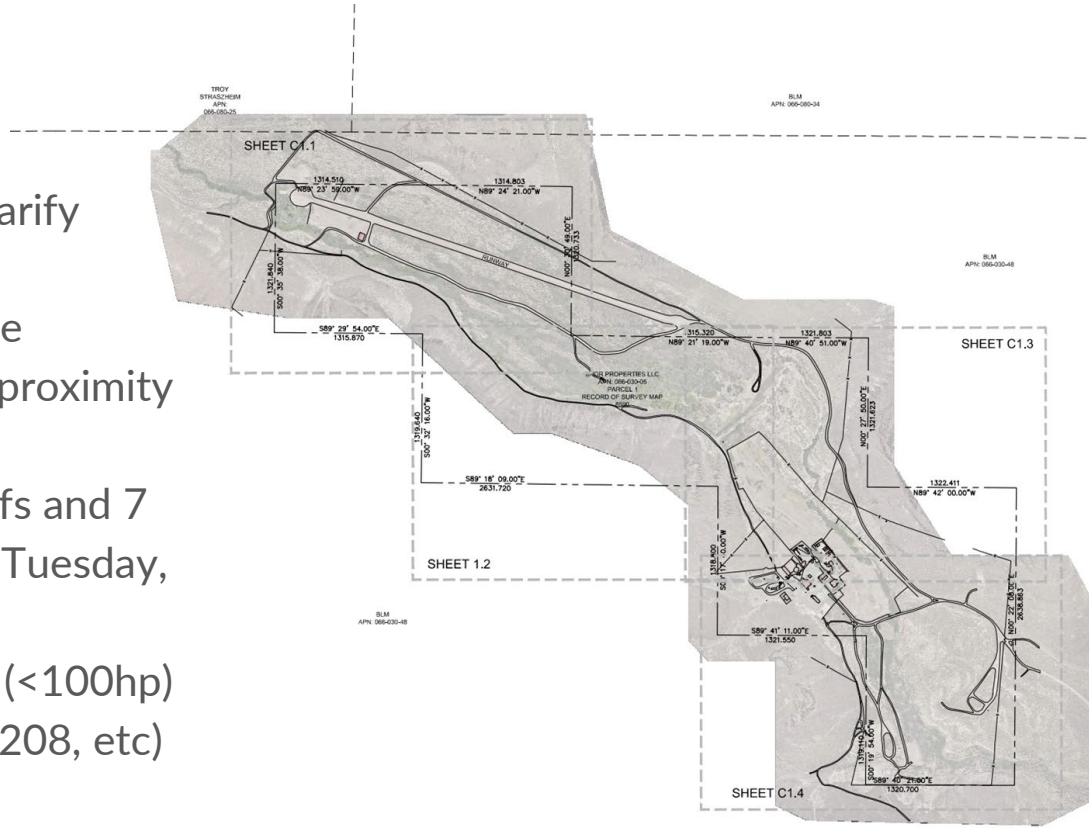
Site Location



- 2.4 miles to nearest inhabited non-Iveson building
- 5.8 miles to Fly Geyser
- 11 miles to Black Rock Playa
- 13.5 miles to Burning Man
- 26 miles to Gerlach

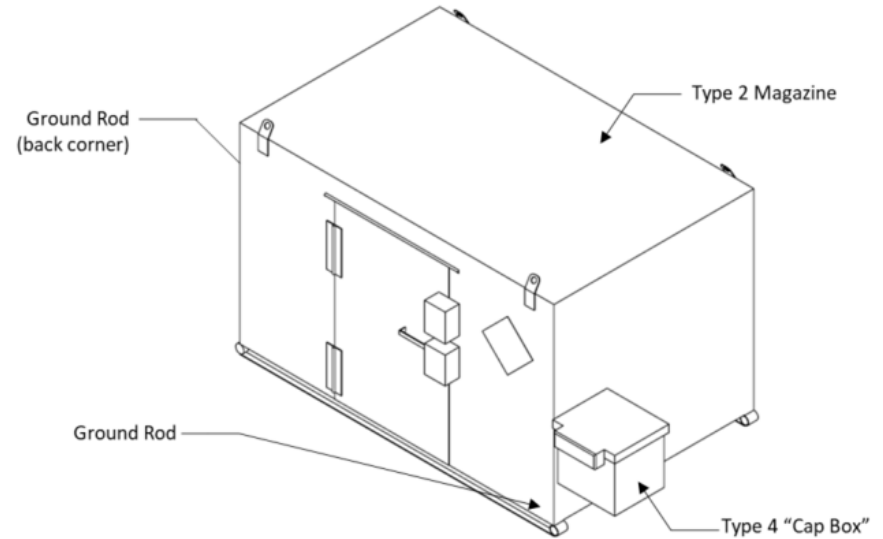


- BLM
APN: 066-030-4E

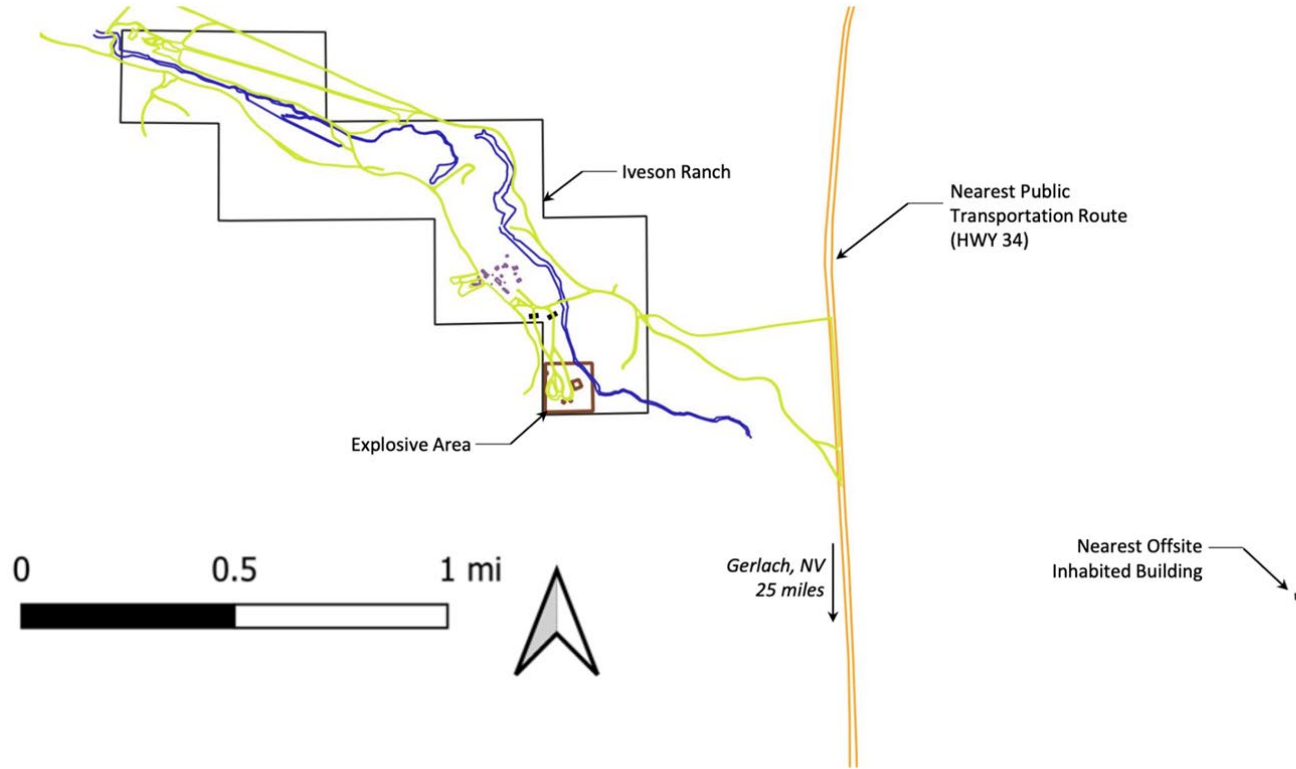


Energetics - Overview

- Seeking to:
 - store **up to** 2000 pounds of energetic material in magazine
 - **static** testing of <10 pounds
- Testing known compounds for reliability and effectiveness
- **Not** testing new materials
- **Not** flying munitions on drones



Energetics - Location



Energetics - Detonators



- <260 events will be detonator-only
- Smaller than a shotgun or firework
- Still requires approval by Washoe and ATF for storage and use

Blasting Cap (Detonator) Test

All event estimates are projected.

Energetics - Solid Rocket Motor

- <40 tests per year
- Static tests only
- Permitted on Black Rock Playa during Tripoli Events



All event estimates are projected.

Energetics - <12 pound charge



- Larger than anything we will use at Iveson
- Up to 40 test events in the 0.1-5 lb range
- Additional 40 test events per year in the 5-12 lb range

All event estimates are projected.

12 lbs C4

Government and Community Outreach



- County Staff
- Truckee Meadows Fire
- Northern Nevada Public Health
- Nevada Department of Wildlife
- Nevada Division of Environmental Protection
- Neighborhood Meetings (3)
- Gerlach Community Advisory Board (2)
- Washoe Planning Commission Meeting
- Burning Man Project
- Friends of Nevada Wilderness
- Coalition for Nevada's Wildlife
- Bright Holland Company and BBB Investments LLC
- Multiple other interested groups and individuals



Questions?

Please reach out:

Mike Arth, Iveson Ranch GM
marth@brdrproperties.com

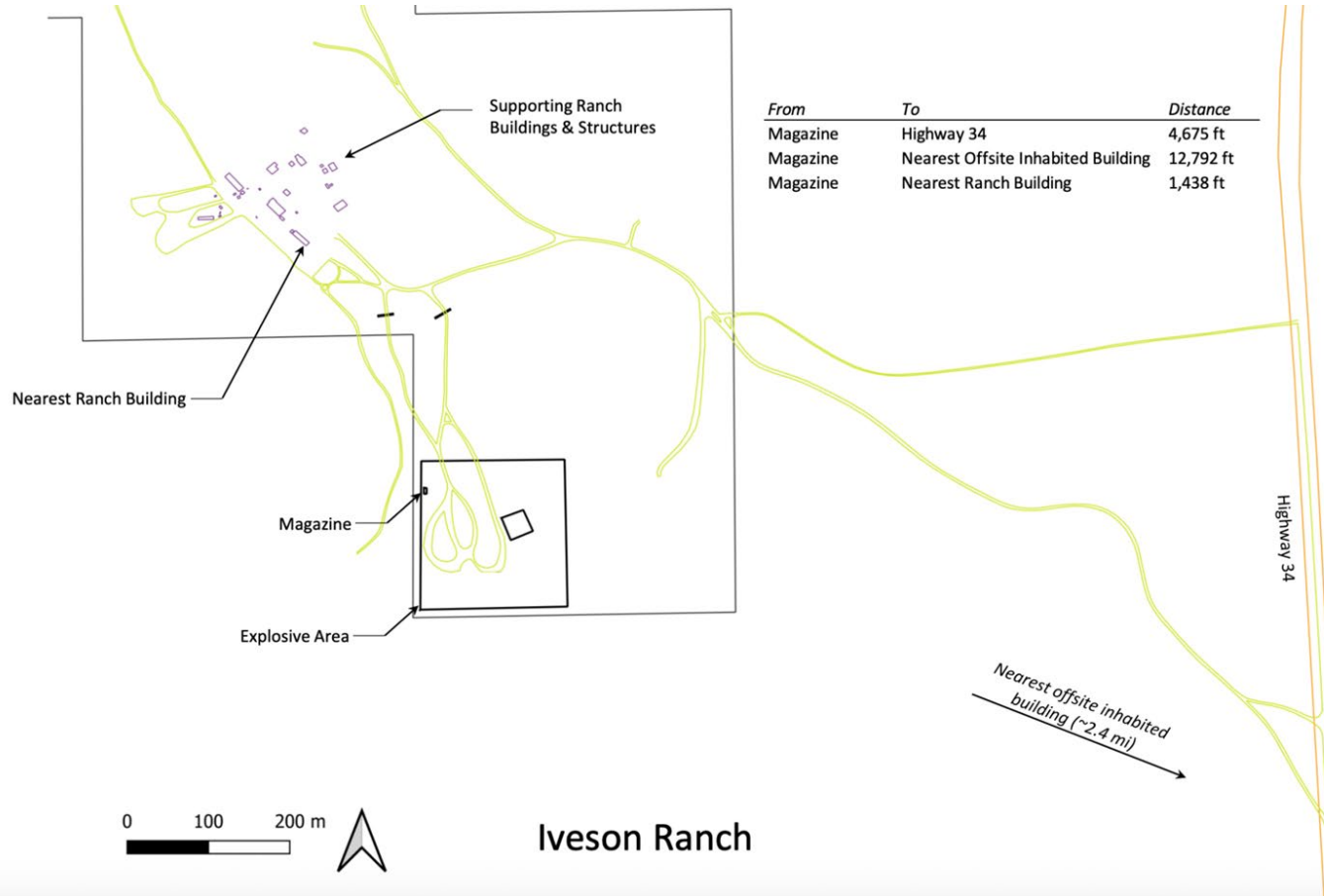


Back-Up Slides

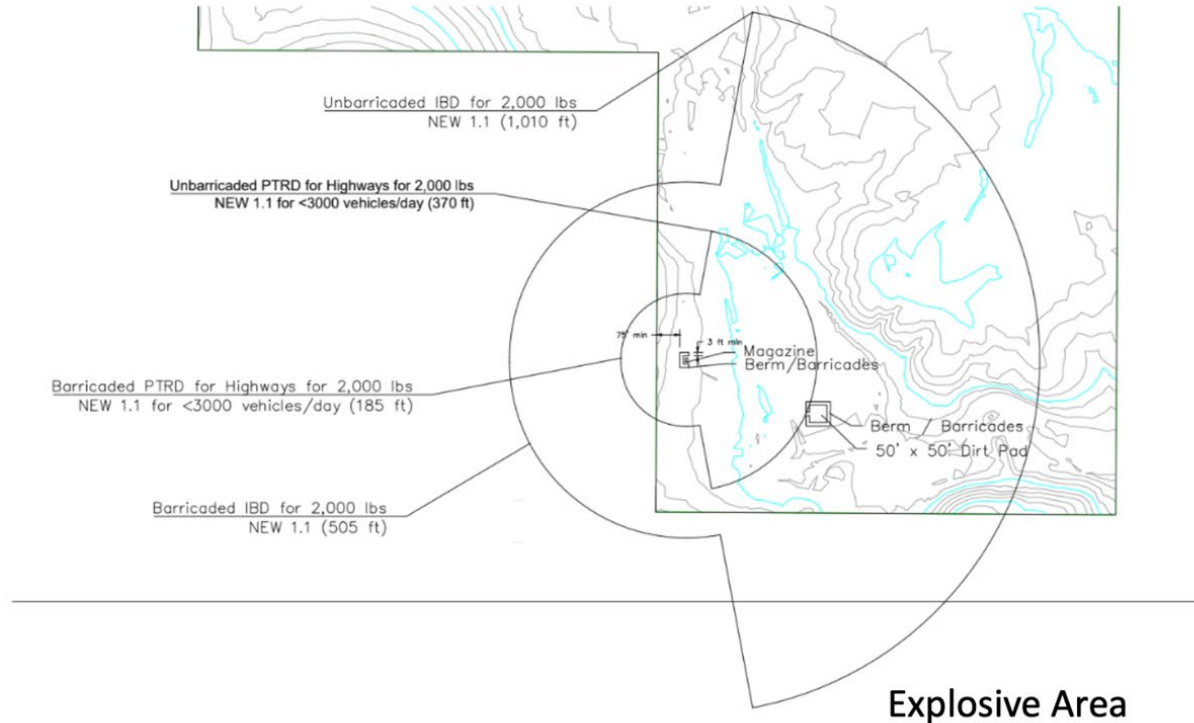
Energetics - Location



Energetics - Safety



Energetics - Safety



Energetics - Safety

Exposure	K-Factor	Distance (ft) for 200 lbs	Distance (ft) for 10 lbs
Inhabited Building (IBD) (<100,000 lbs)	40	233.9	86.2
Public Traffic Route (PTRD) Distance (<100,000 lbs)	24	140.4	51.7
Absolute Safe Distance	328	1918.2	706.7

Energetics - Type Distribution (Projected)



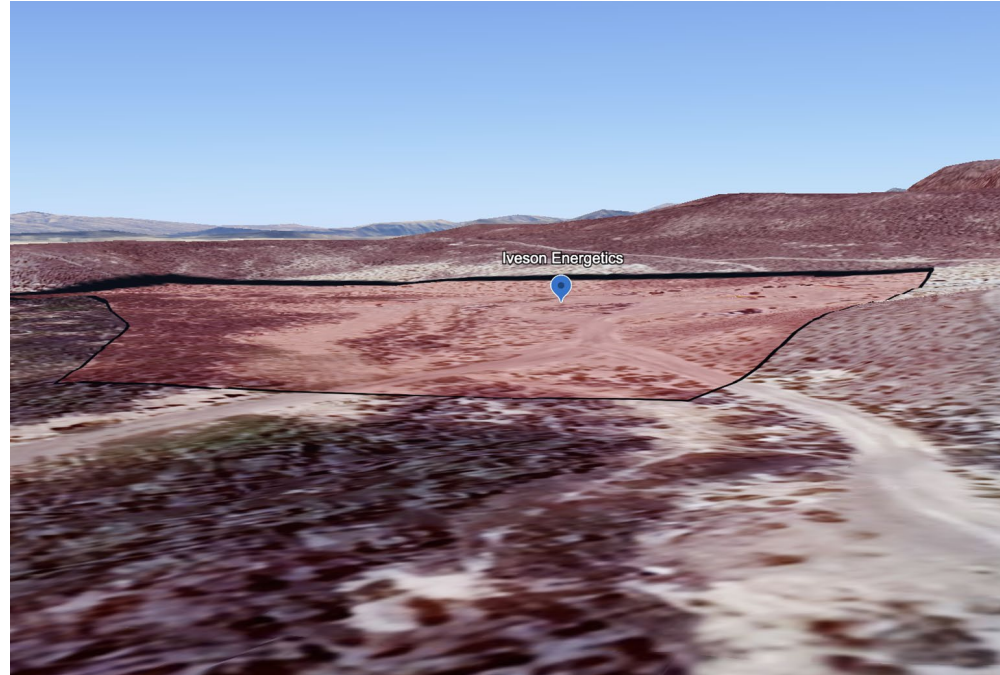
- 70% (250) Detonators
- 10% (36) 1-5 pound charges
- 10% (36) 5-10 pound charges
- 10% (36) Hobby Rocket Motors

*All event estimates are
projected.*

Energetics - Noise

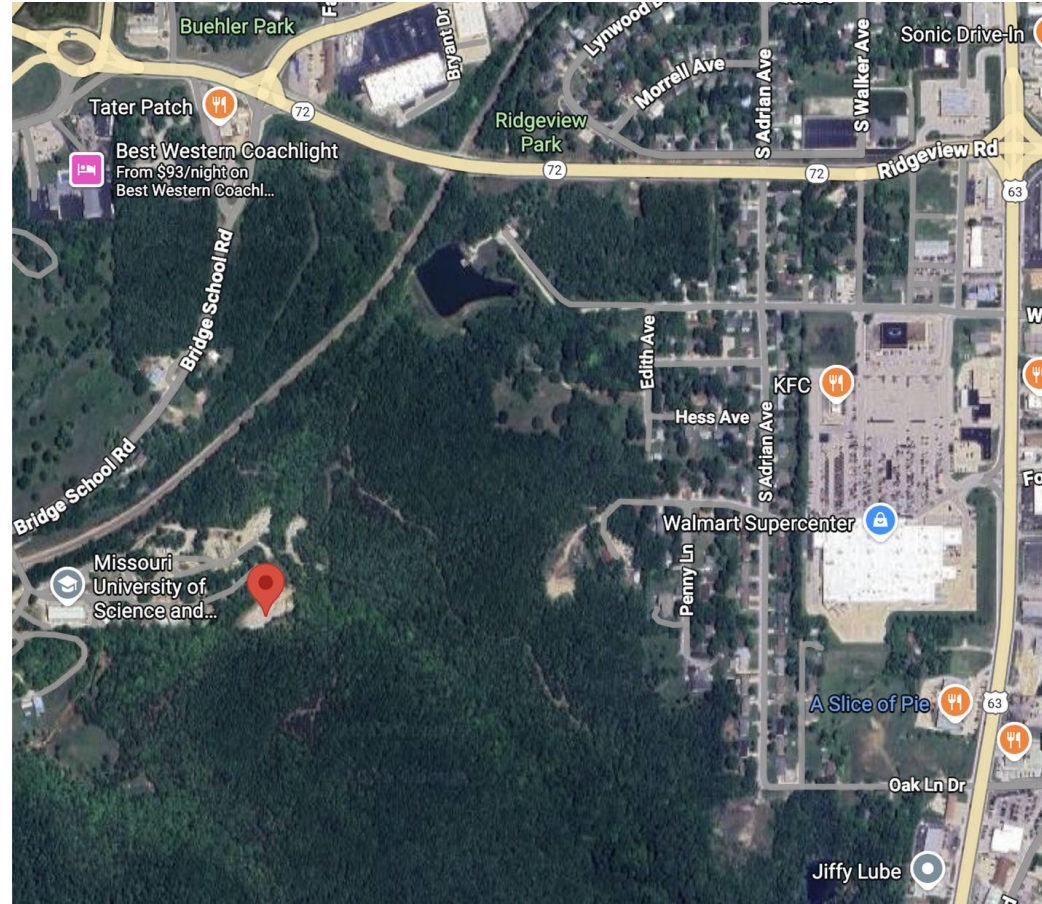


- Terrain shields from noise propagation
- May faintly hear sounds if within 5 miles, outdoors, and no other sound around you. I.e., no wind, engines, birds, conversations, etc.
- Rocket motors and munitions similar noise level to shotgun at distance.



Energetics - Noise Comparison

- Rolla, Missouri
- Missouri University of Science and Technology Experimental Mine Site
- Above and below ground testing
- Less than half a mile from Walmart, housing, hotels, restaurants
- No noise complaints with charges less than 7 pounds



Energetics - Frequency (Projected)



TABLE 6: TYPICAL ANNUAL TEST FREQUENCY

Number of Tests per Day	5
Test Days per Week	4
Test Weeks per Year	18
Total # of Tests per Year:	360

*All event estimates are
projected.*

Energetics - Materials

TABLE 1: LIST OF ENERGETIC MATERIAL ON SITE

List of Energetic Material		
<i>CAS #</i>	<i>Explosive</i>	<i>Expected Applications</i>
121-82-4	RDX	Composition C-4, A5
118-96-7	TNT	Hexolite, Pentolite
78-11-5	PETN	Detasheet, Blasting Caps, Detonating Cord
2691-41-0	HMX	NONEL, PBX 9501
7790-98-9	AP	Hobby Rocket Motors

Energetics - Pollution

TABLE 7: IVESON RANCH EMISSION RATES SHOWN AGAINST THRESHOLD LIMITS

Regulated Criteria Pollutant	Minor Source Potential to Emit (PTE) Threshold (tons/year)	Ivesone Potential to Emit (tons/year)
PM10	5	0.019
PM2.5	5	0.041
Carbon Monoxide (CO)	5	0.244
Volatile Organic Compounds	5	<i>Note 1</i>
Nitrous Oxides (NOx)	5	0.024
Sulfur Dioxide (SO2)	5	0.027
Lead (Pb)	0.3	0.00014
Hazardous Air Pollutants (HAP)	5 (major)	1.2
<i>Note 1: VOCs are included in HAP calculation</i>		

Bottom line: each static munition test event will emit about as much pollution as an F-150 engine running for about one hour.

Energetics - Pollution

TABLE 8: REQUIRED TESTS TO ACHIEVE FIVE TONS OF HAP OUTPUT

Tons of Criteria Pollutant / Yr		
	<i>No. of Tests/Yr</i>	
	360	1503
PM10	0.018684	0.078004804
PM2.5	0.040695	0.16990029
Carbon Monoxide (CO)	0.243684	1.017380355
Nitrous Oxides (NOx)	0.023677	0.098850982
Sulfur Dioxide (SO2)	0.027105	0.113163475
Lead (Pb)	0.000145	0.000604777
Hazardous Air Pollutants (HAPs)	1.196937	4.997212151