

2025-2045 WATER RESOURCE PLAN

*Washoe County Commission
January 2026*



**Truckee Meadows
Water Authority**

Quality. Delivered.

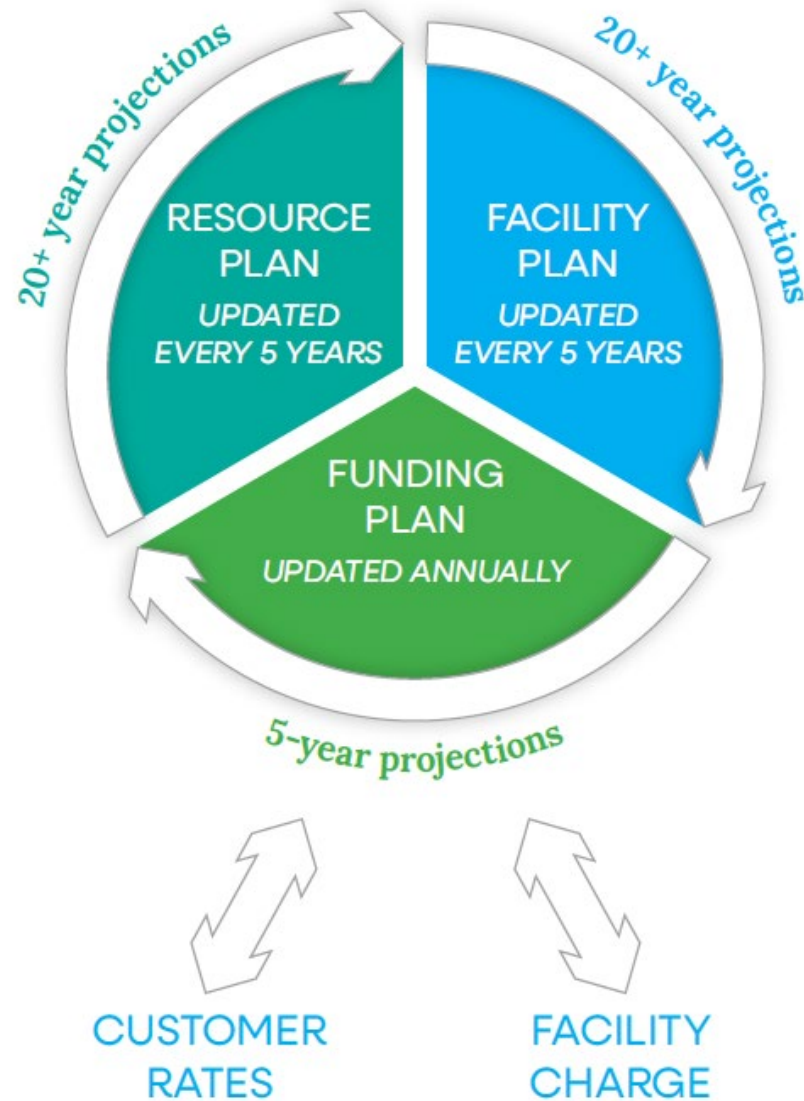
OVERVIEW



- The 2025-2045 WRP is the fifth version of the plan since TMWA's inception
- Developed a summarized version – “At-A-Glance” Report



COMPREHENSIVE PLANNING



PLAN GOALS AND OBJECTIVES



Goals

- ✓ Ensure TMWA has adequate water resources to meet the community's needs over the next 20 years and beyond.
- ✓ Evaluate and implement innovative solutions to best manage water resources in the region.
- ✓ Maintain community confidence in TMWA's planning process.
- ✓ Recommend management strategies and policies to guide TMWA over the next five years.



Objectives

- ✓ Provide an overview of TMWA's current water resources and available water rights.
- ✓ Analyze alternative supply and demand scenarios to determine the resiliency of TMWA's resources.
- ✓ Assess potential impacts of climate change on regional water resources.
- ✓ Evaluate TMWA's current water management and conservation strategies and implement changes as future conditions warrant.
- ✓ Identify future water resource opportunities and water management strategies.
- ✓ Provide opportunities for input from the public and TMWA's Board throughout the planning process.

CUSTOMER SURVEY

- TMWA's semi-annual customer survey asked questions about the future of TMWA's water supply
- In the Fall 2024 survey, the following topics were most reported by respondents:

71%

Maintaining the high quality
of drinking water

64%

Keeping water
affordable

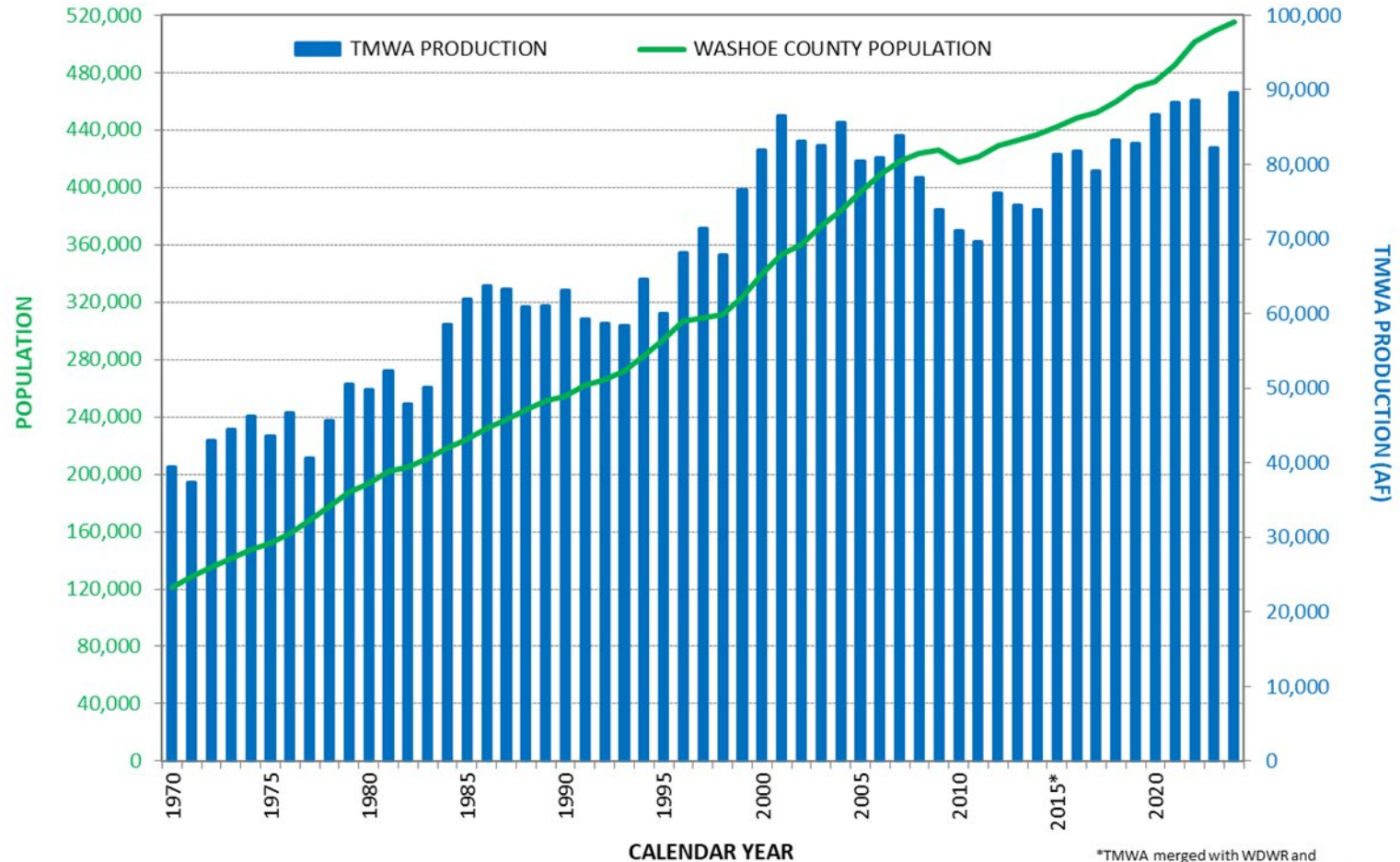
52%

Have a sufficient water supply
during drought

50%

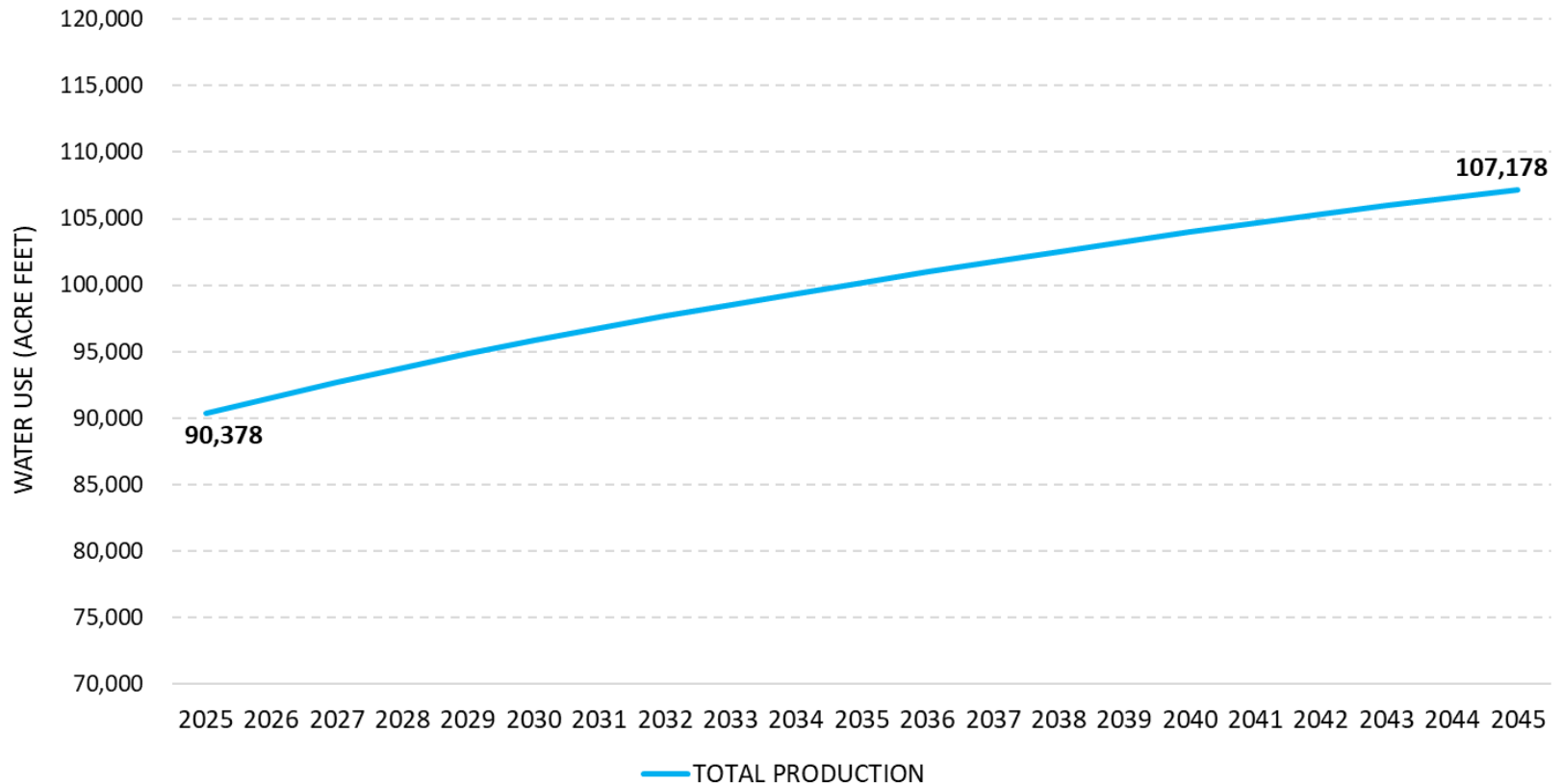
Meeting the needs of
a growing population

WASHOE COUNTY POPULATION & TMWA WATER PRODUCTION



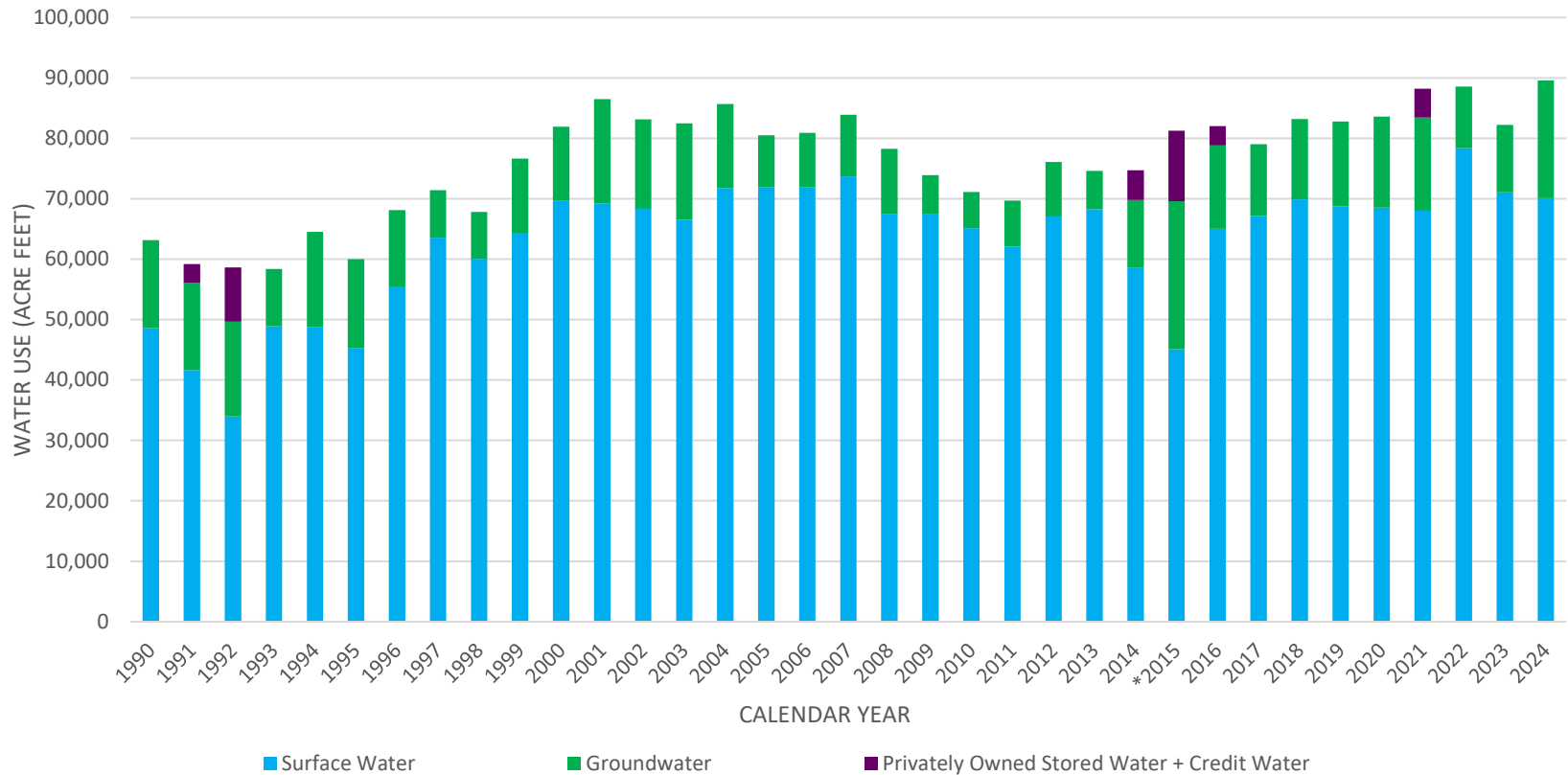
*TMWA merged with WDWR and STMGID, leading to an increase in service connections

20-YEAR WATER DEMAND PROJECTION



- Over the next two decades, TMWA's water demand is projected to rise by approximately 1.8% annually

SOURCES OF SUPPLY

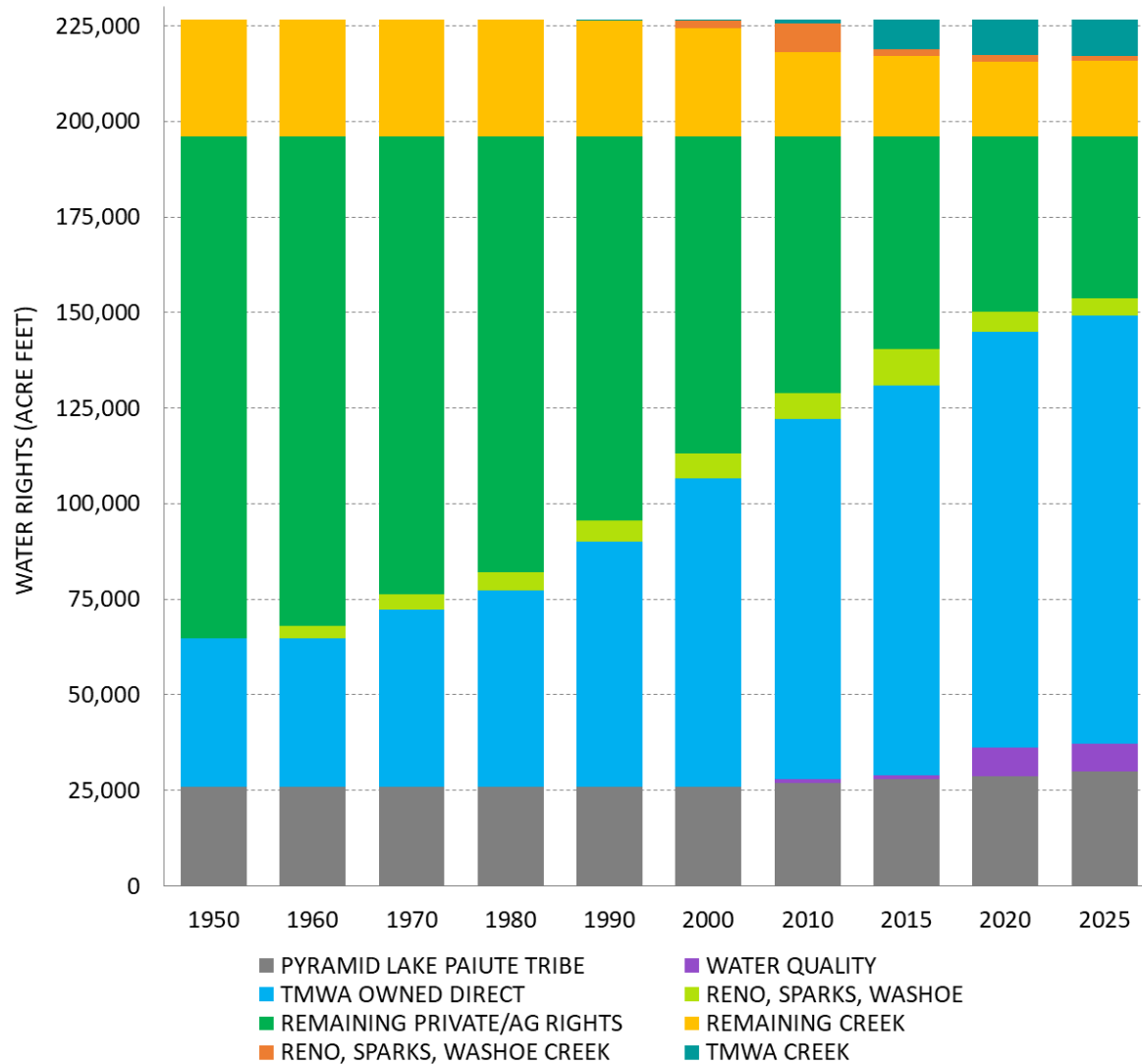


*TMWA merged with WDWR and STMGID in 2015.

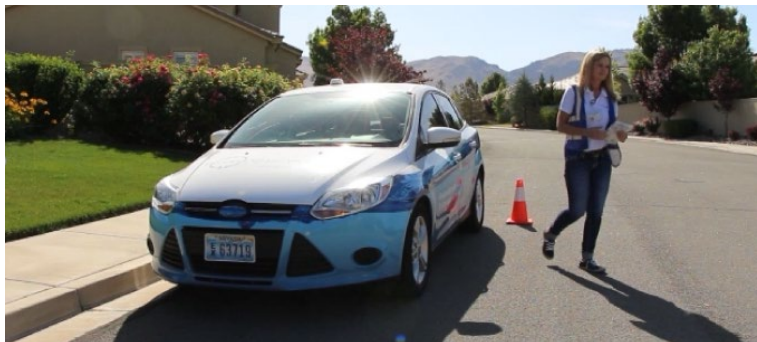
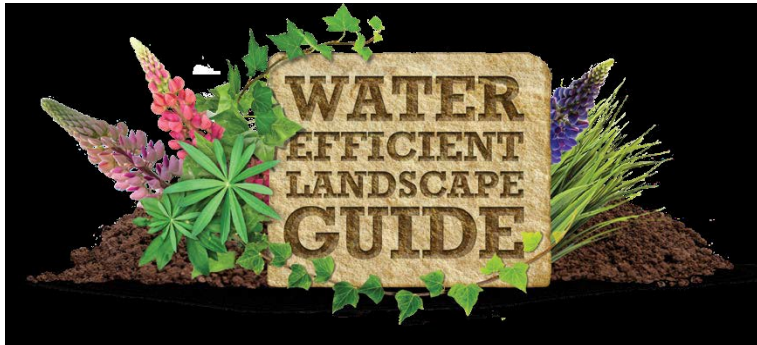
TMWA WATER RIGHTS

TMWA WATER RIGHTS	ACRE FEET
Surface Water–Original M&I decreed rights	38,806
Surface Water–POSW	27,000
Surface Water–Converted decreed ag. rights	82,396
Total Surface Water Resources	148,202
Groundwater Rights By Basin	
Tracy	524
Spanish Springs	3,708
Truckee Meadows	23,845
Pleasant Valley	3,860
Washoe Valley	219
Truckee Canyon–Verdi	337
West Lemmon Valley	944
East Lemmon Valley	1,570
Honey Lake Valley–Fish Springs Ranch	8,000
Total Groundwater Resources	43,007
TOTAL WATER RESOURCES	191,209

TRUCKEE RIVER WATER RIGHTS

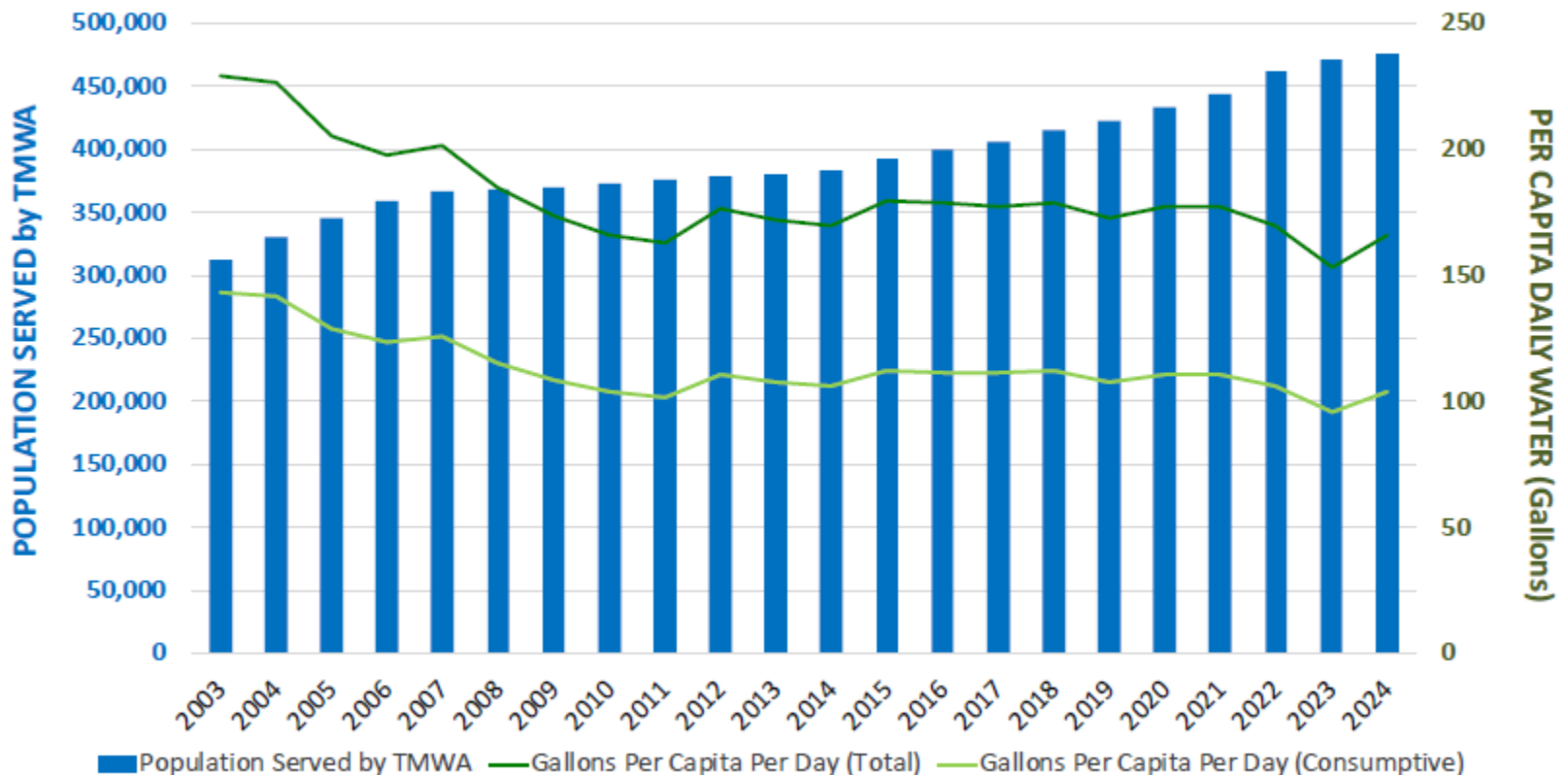


WATER CONSERVATION

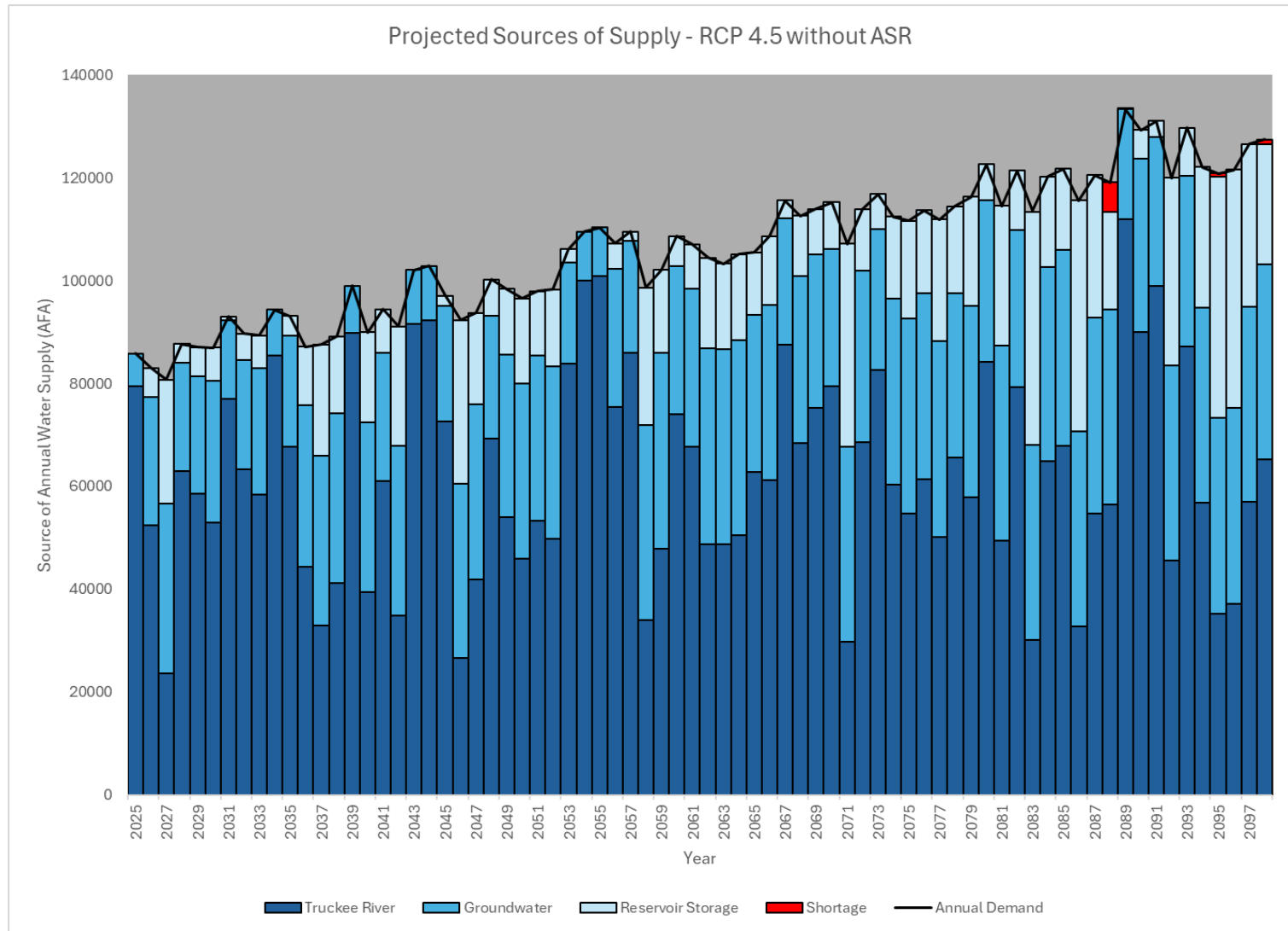


- Water efficiency codes
 - Assigned-day watering
- Seasonal water conservation consultants
- Tiered-rate billing structure
- Education and outreach:
 - Landscaping and irrigation workshops
 - Water efficient landscaping guide
- Water usage review program
- Increased conservation measures enacted when upstream drought reserves are projected to be needed

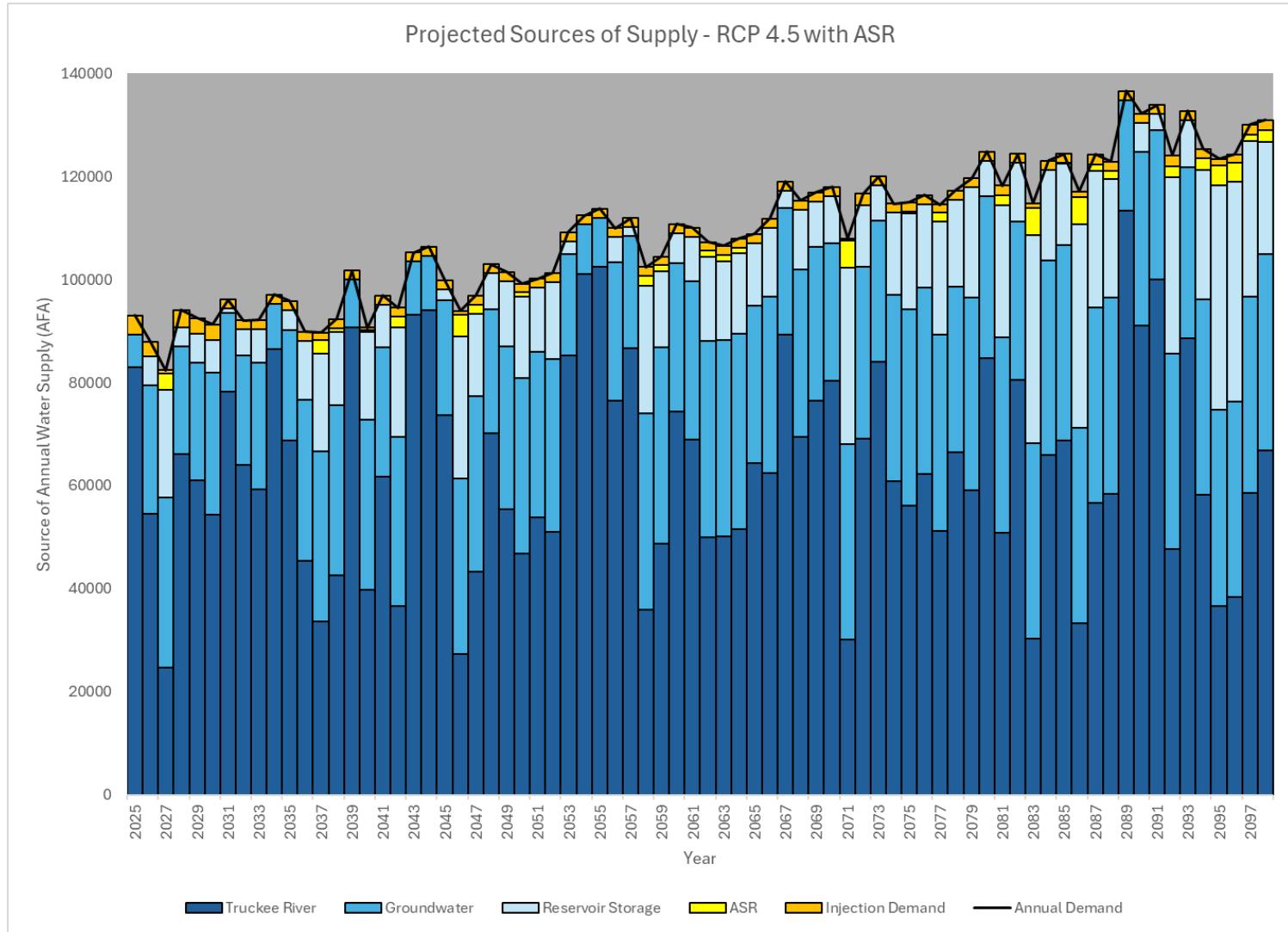
RESIDENTIAL PER CAPITA WATER DEMAND



FUTURE CONDITIONS



FUTURE CONDITIONS



FUTURE WATER RESOURCES

- Describes future water resource projects with benefit and challenge tables for each potential resource. Future resource projects detailed in the chapter include the following:
 - Additional Groundwater Capacity Projects
 - Creek Water Resources
 - Marlette Lake Water System – Wholesale Service
 - Reclaimed Water
 - Advanced Purified Water
 - Water Banking Projects
 - Other Conceptual Resources

PROTECTING THE WATERSHED AND ENVIRONMENT

- TMWA has various partnerships to protect and improve the region's sources of supply:
 - Truckee River Fund
 - Middle Truckee River Watershed Forest Partnership
 - One Truckee River Partnership Council
 - Donner Interagency Partnership for Stewardship
 - Washoe County Integrated Source Water Protection Plan
- TMWA's hydroelectric plants provide a source of renewable energy to offset TMWA's power costs

KEY TAKEAWAYS

- TMWA has sufficient water rights to address the region's growing water demand over the next 20 years.
- Results show that TMWA has a resilient and reliable water supply due to decades of prior planning.
- The WRP outlines Recommended Strategies and Near-Term Actions to guide TMWA over the next five years and beyond.
- TMWA constantly analyzes future resource options to further increase the region's resiliency to droughts and climate variability.
- The WRP is an evolving document that will be updated again in five years to account for any changes that have occurred in the region.



**Truckee Meadows
Water Authority**

Quality. Delivered.

QUESTIONS?



WRP is available on <https://tmwa.com/wrp2025>