



**WASHOE COUNTY COMMISSION**

1001 E. 9th Street  
Reno, Nevada 89512  
(775) 328-2000

**RESOLUTION**

**SPONSORING AN AMENDMENT TO THE TRUCKEE MEADOWS REGIONAL PLAN TO UPDATE THE EXISTING UTILITY CORRIDORS MAP TO INCLUDE: (1) A 48 MW GEOTHEMAL ENERGY CENTER (CONTAINING TWO 24MW GEOTHERMAL FACILITIES AND RELATED SUBSTATIONS ON APNS 071-070-13, 071-030-06) APPROXIMATELY 10 MILES NORTH OF PYRAMID LAKE; AND (2) A 21.6 MILE 120 KV OVERHEAD TRANSMISSION LINE CONNECTION WITHIN AN EXISTING UTILITY CORRIDOR APPROXIMATELY 10 MILES EAST OF THE SOUTHERN TIP OF PYRAMID LAKE SOUTH TO THE BORDER OF WASHOE COUNTY. (WSUP20-0013 ORMAT GEOTHERMAL)**

WHEREAS, Truckee Meadows Regional Plan (TMRP) Policy 3.8.1 requires that all regional utility corridors and sites be identified on the Existing Utility Corridors (South) map;

WHEREAS, Orni 36, LLC has applied for a Washoe County special use permit in related and pending proceedings under WSUP20-0013 to construct a 48 MW solar energy center (containing two 24MW geothermal facilities, new substations,) approximately 10 miles north of Pyramid Lake and a transmission line A 21.6 Mile 120 kV overhead transmission line connection within an existing utility corridor approximately 10 miles east of the southern tip of Pyramid Lake south to the border of Washoe County as part of a project of regional significance known as the Ormat Geothermal Facility;

WHEREAS, construction of the Ormat Geothermal Power facility will require an amendment to the TMRP Existing Utility Corridors map in order to identify to the project site, including its substation and associated overhead transmission line;

WHEREAS, a special use permit for the Ormat 48 MW geothermal energy center (including proposed substation and transmission line) was heard and denied by the Washoe County Planning Commission at their September 1, 2020 meeting and overturned by the Washoe County Commission on Nov 10, 2020, and is pending review by the Regional Planning Commission as a Project of Regional Significance; and

WHEREAS, the Washoe County Commission has considered at its meeting on Nov 10, 2020, the request that it sponsor an amendment to the Regional Plan pursuant to NRS 278.0272(7) in connection with the overall completion of the Ormat Geothermal project and determined that the request is meritorious and will be beneficial to the residents of the community by furthering the responsible development of renewable energy resources.

**NOW THEREFORE BE IT RESOLVED,**

That this Board of County Commissioners does hereby sponsor the amendment of the Existing Utility Corridors (South) map, a part of the 2019 Truckee Meadows Regional Plan, for the addition of a new 48 MW geothermal energy center, including a new substation and overhead transmission line to support the development of the Ormat Geothermal project as provided in WSUP20-0013, and the map and documents attached hereto.

WSUP20-0013 Ormat Geothermal  
Page 2 of 5

WASHOE COUNTY COMMISSION

---

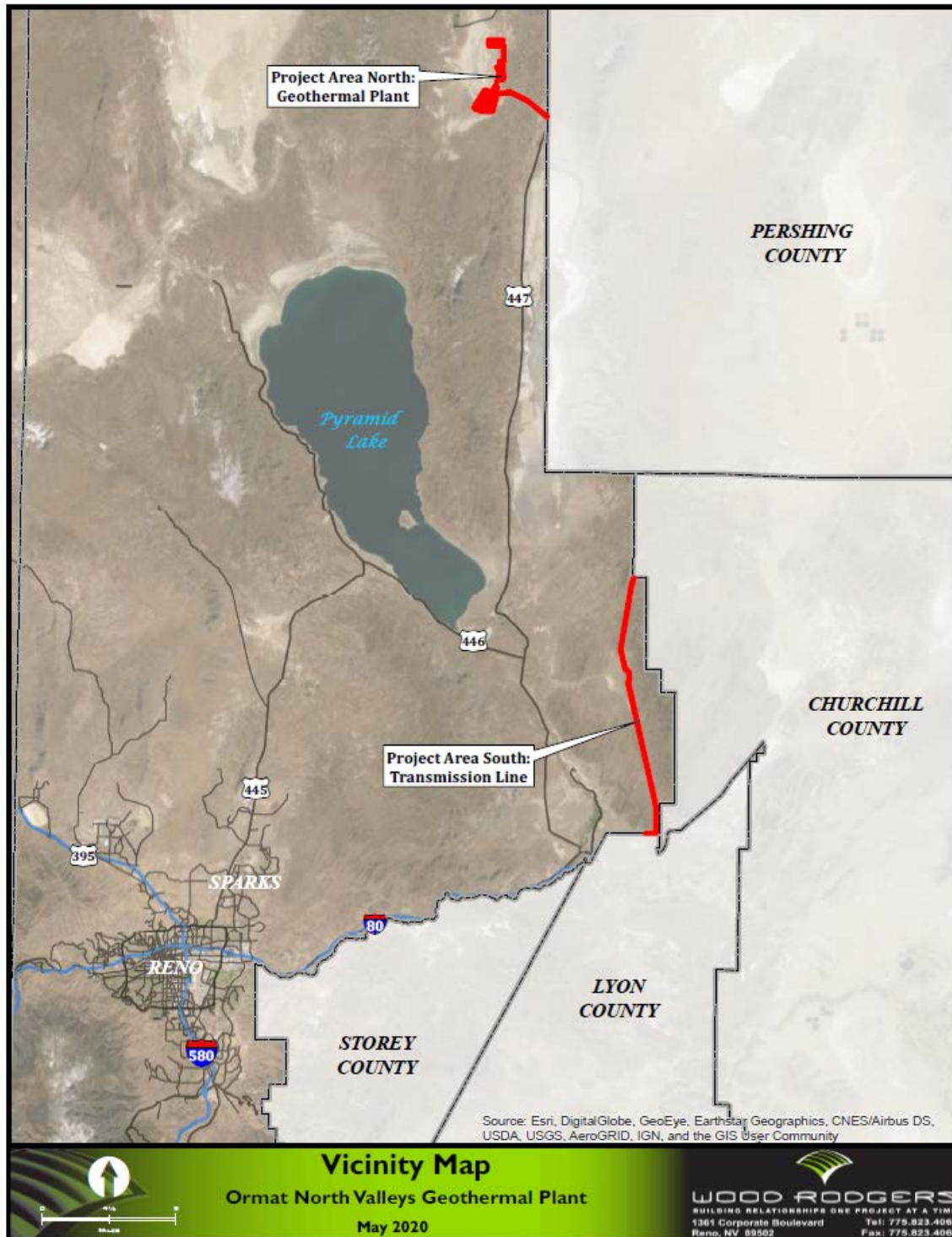
Bob Lucey, Chair

ATTEST:

---

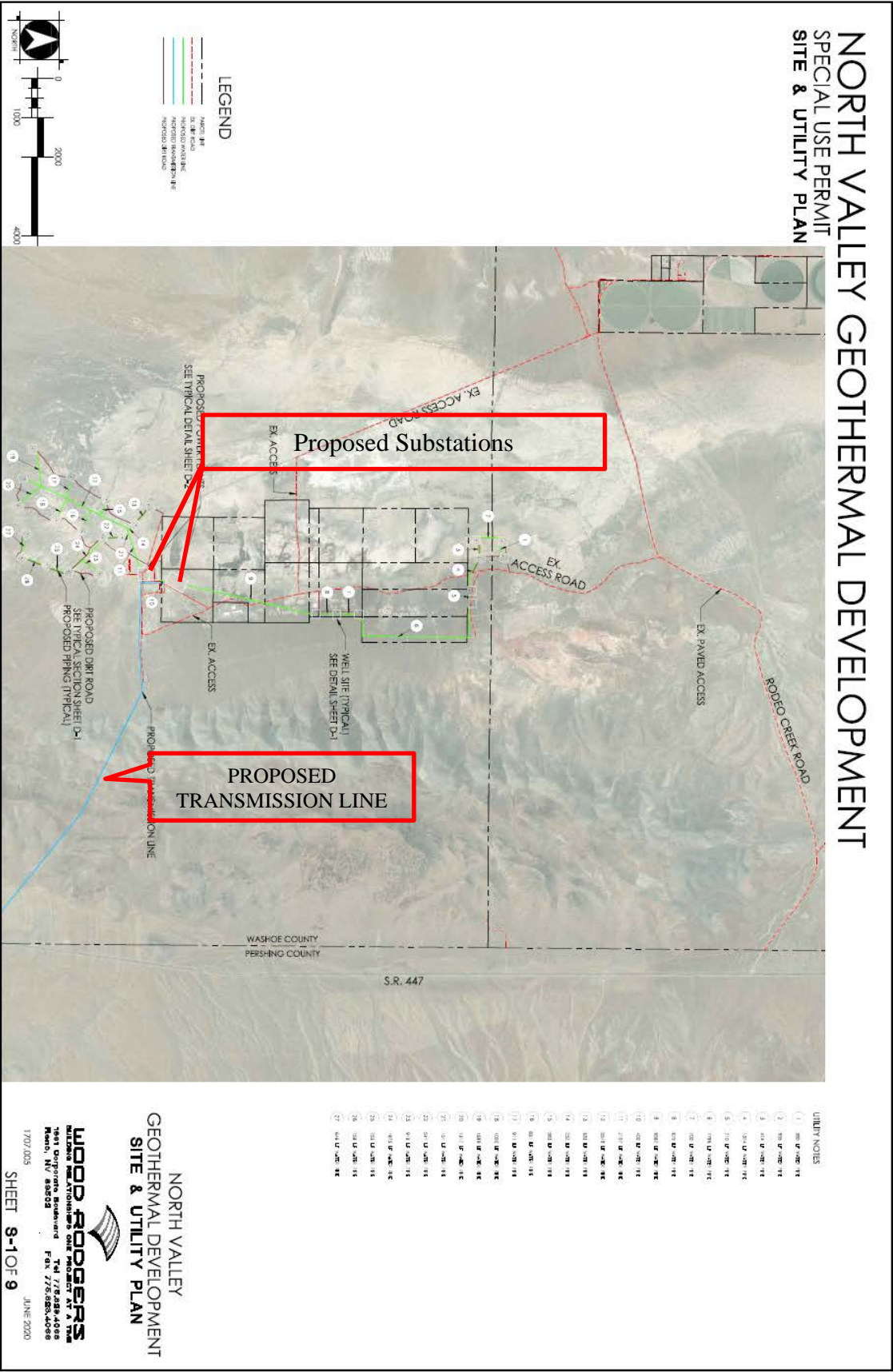
Janis Galassini, County Clerk

**EXHIBIT A**  
**PROJECT AREA - DETAIL FOR PROPOSED AMENDMENT TO**  
**EXISTING UTILITY CORRIDORS (SOUTH) MAP**



J:\John\1707\_Steamboat Hills Geothermal\North\_Valley\_Geothermal\_DA\GIS\Task\VicinityMap\_20200528\_V1.mxd 5/29/2020 4:24:17 PM elucy

EXHIBIT B  
NORTH - DETAIL FOR PROPOSED AMENDMENT TO  
EXISTING UTILITY CORRIDORS (SOUTH) MAP



**EXHIBIT C**  
**SUBSTATION - DETAIL FOR PROPOSED AMENDMENT TO**  
**EXISTING UTILITY CORRIDORS (SOUTH) MAP**

