



REGIONAL TRANSPORTATION COMMISSION

Metropolitan Planning • Public Transportation & Operations • Engineering & Construction

Metropolitan Planning Organization of Washoe County, Nevada

6th Edition Regional Road Impact Fee Update

**Washoe County Board of
County Commissioners
October 8, 2019**



RRIF General Administrative Manual



REGIONAL ROAD IMPACT FEE SYSTEM

GENERAL ADMINISTRATIVE MANUAL

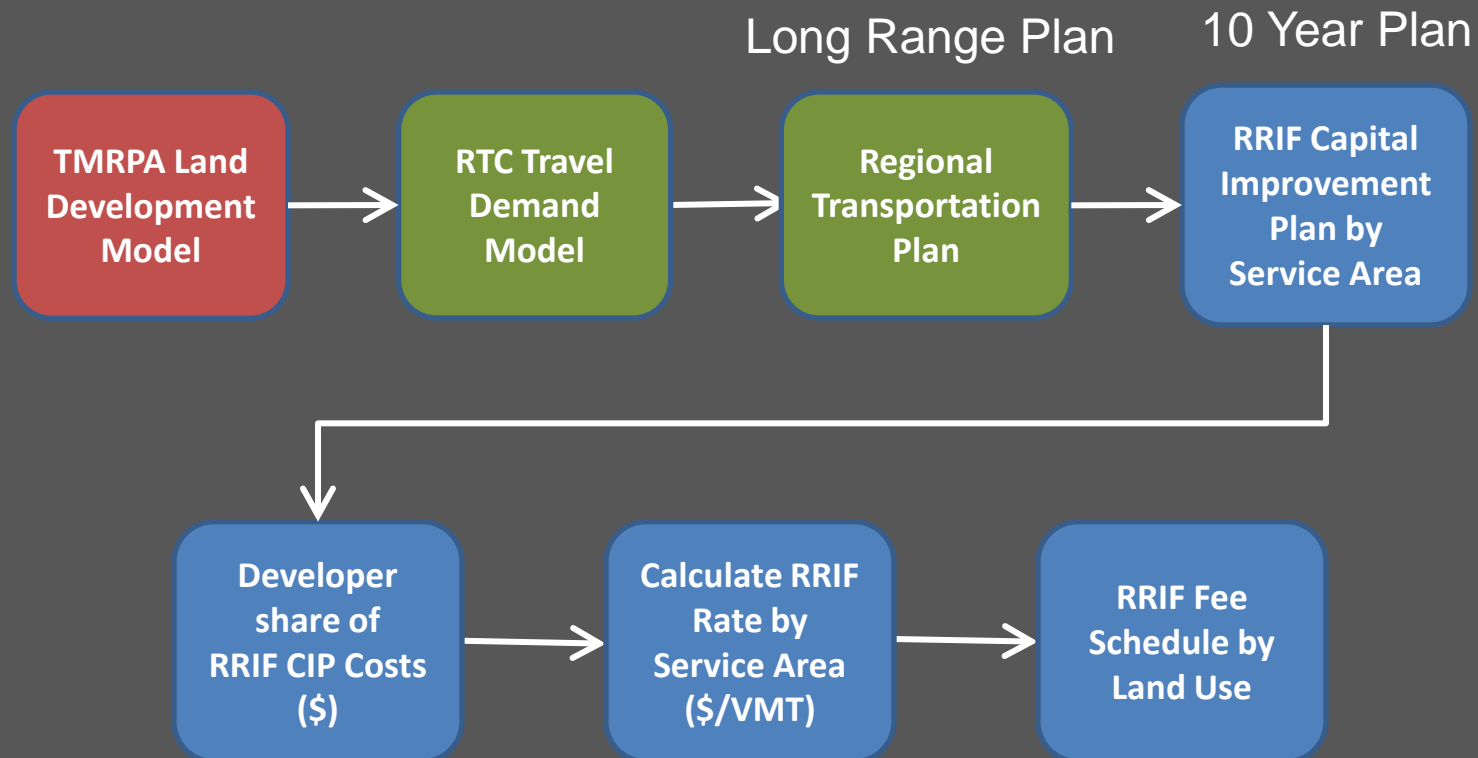
6TH EDITION



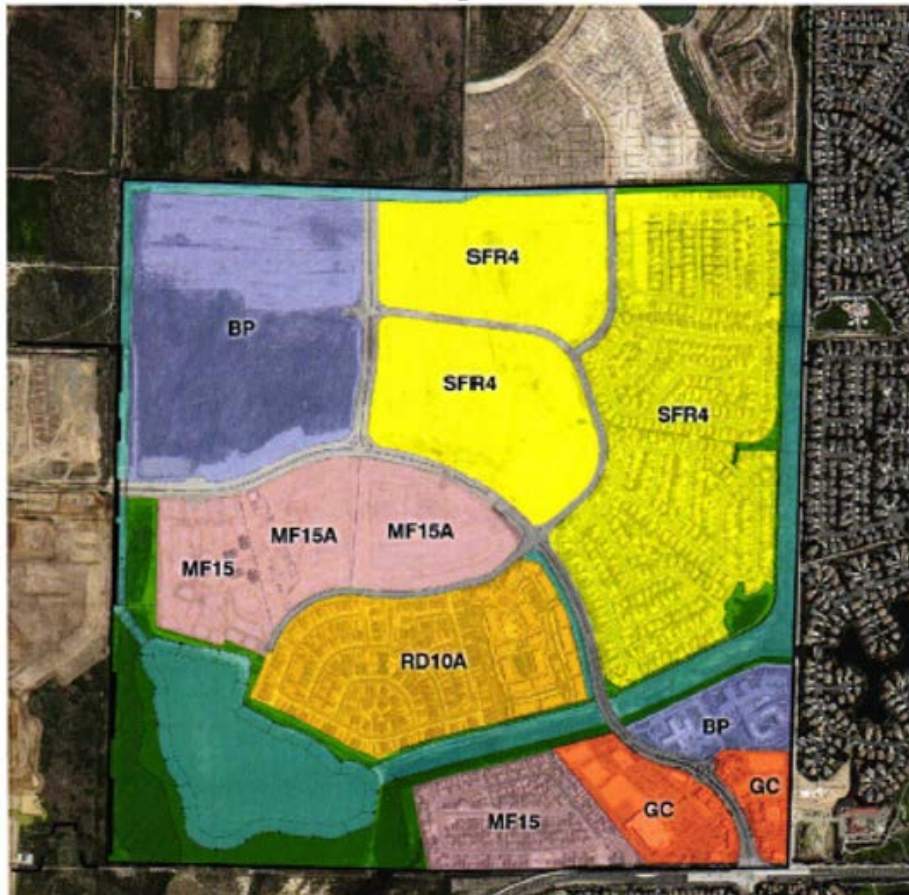
IX. Exemptions – State Buildings

X. Impact Fee Offset Agreements
Timing

Regional Road Impact Fee Development

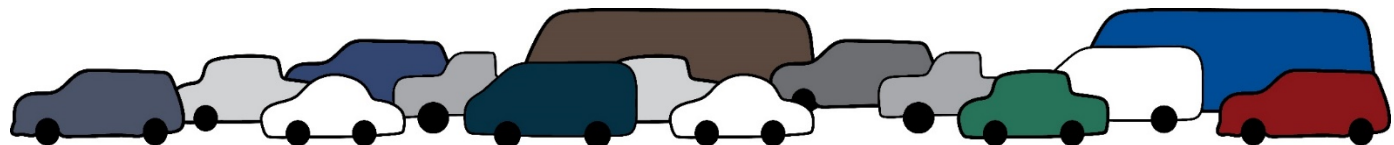


Example of a Development Area



**Service Units Based
on Land Use**

**Measured
in Vehicle Miles
Travelled (VMT)**



Regional Transportation Plan

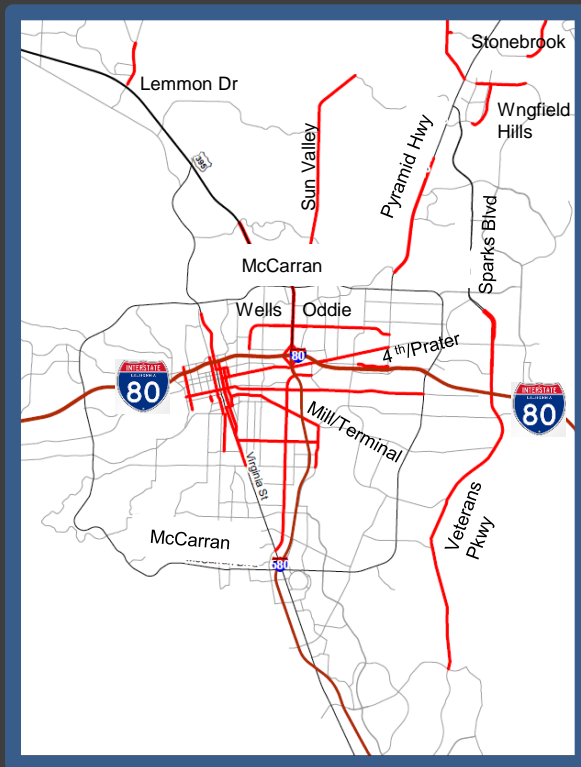


Region-Wide Long Term Transportation Investments

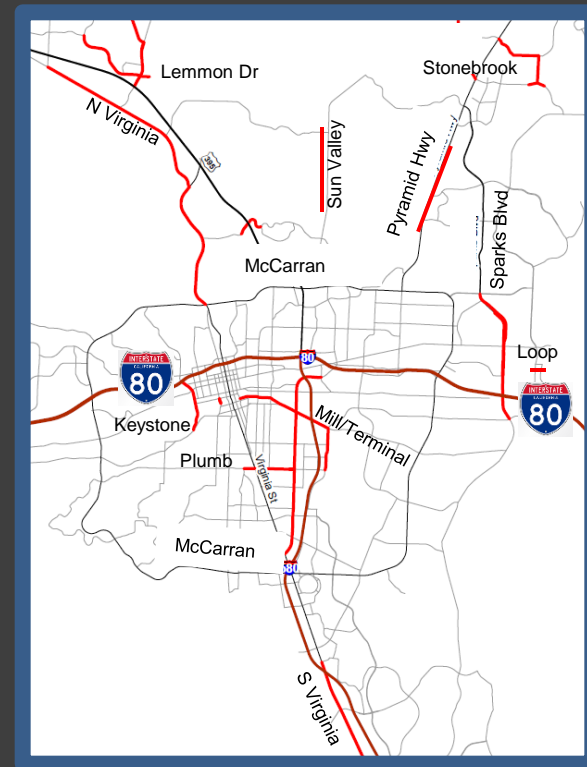
Regional Road Impact Fee Capital Improvement Plan



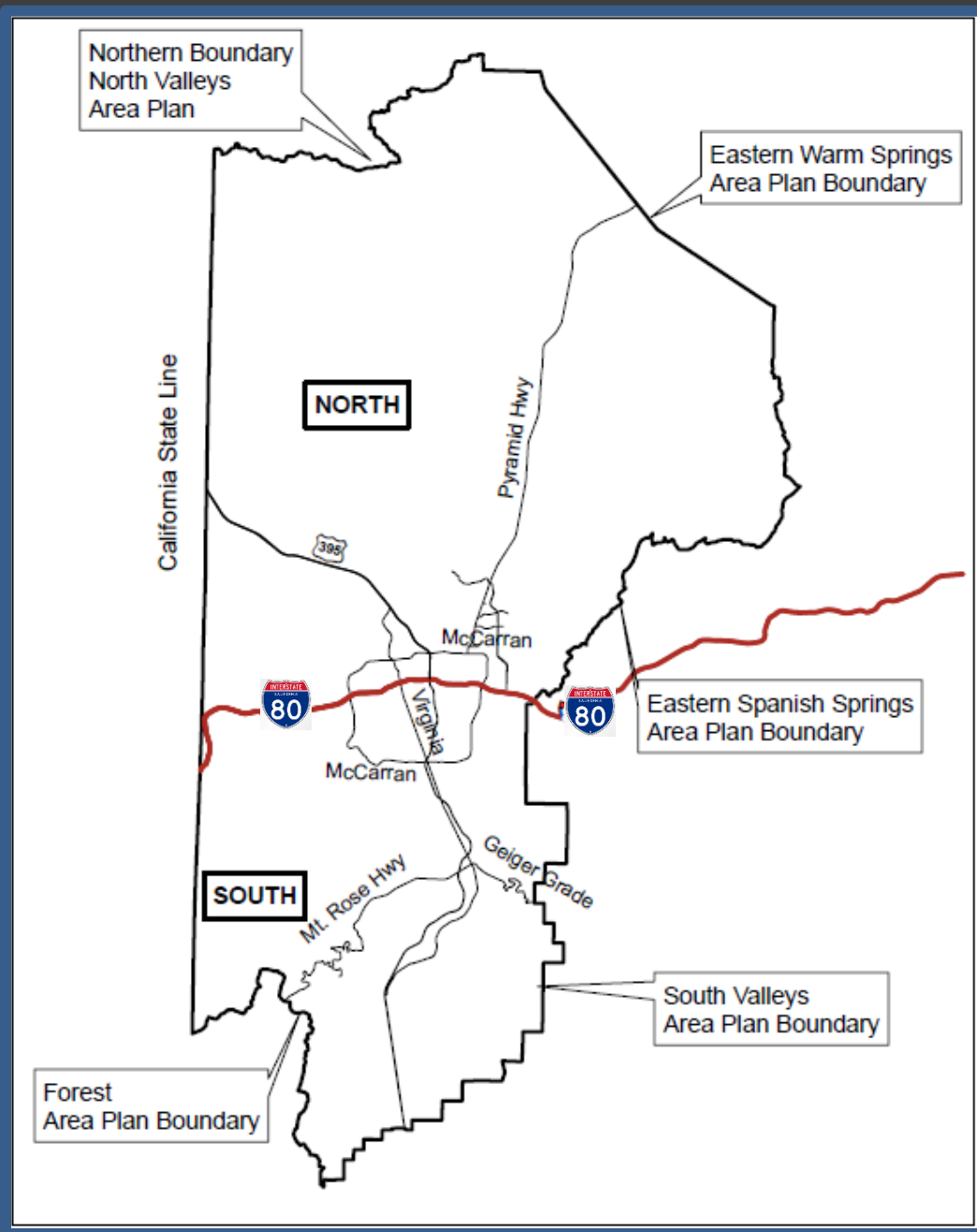
10 Year Regional Road Improvements



2017-2021



2022-2026



**North and South
Service Areas
Defined by
Area Plan Boundaries
and Separated by I-80**

6th Edition Impact Fee Rates



<i>Description</i>	<i>North Service Area</i>	<i>South Service Area</i>
1 st 10 Years Capacity Related RTP projects	\$427,729,055	\$301,352,036
Other Funding Sources	(\$324,445,934)	(\$228,584,992)
RRIF Share by Service Area	\$103,283,121	\$72,767,044
VMT Growth by Service Area	322,046	232,352
\$/VMT for RRIF Share	\$320.71	\$313.18

$$\text{RRIF Share (\$)} / \text{VMT Growth} = \text{\$/VMT Rate}$$

Proposed 6th Edition and Current 5th Edition RRIF Fees Comparison



		Draft 6th Edition				5th Edition Year 3 Indexing					
RRIF Input Variables		North		South		North		South		Difference 6 th vs 5 th Ed	
Average Trip Length (Mi)		2.79		2.64		2.87		2.82			
RRIF Share of CIP		\$103,283,121		\$72,767,044		\$65,394,800		\$100,474,800			
VMT Growth		322,046		232,352		258,081		350,027			
RRIF Cost per VMT		\$320.71		\$313.18		\$267.58		\$303.11		\$53.13 \$10.07	
Development Type	Unit Size	VMT North	6th Ed RRIF North	VMT South	6th Ed RRIF South	VMT North	5th Ed RRIF North	VMT South	5th Ed RRIF South	North	South
Single Family	Dwelling	15.03	\$4,820	14.22	\$4,453	14.93	\$3,995	14.67	\$4,447	\$825	\$7
Multi Family	Dwelling	10.23	\$3,281	9.68	\$3,032	9.70	\$2,596	9.53	\$2,889	\$685	\$143
Retail & Restaurants	1000 SF	22.94	\$7,357	21.71	\$6,799	26.69	\$7,142	26.23	\$7,951	\$215	\$1,151
Lodging	Room	3.41	\$1,094	3.23	\$1,012	5.90	\$1,579	5.79	\$1,755	\$485	\$743

Questions?

Julie Masterpool, P.E.

RTC RRIF Program Manager

jmasterpool@rtcwashoe.com

Mitch Fink, EIT

Washoe RRIF Administrator/Engineering Manager

mfink@washoecounty.us