

**Cover Sheet**

**Date: 2/7/2019**

<b>Organization Name:</b>	Washoe County Parks and Open Space		
<b>Type:</b>	Local Government - County	Governmental entity? Yes	
<b>Address:</b>	1001 E. 9 <sup>th</sup> St. Reno, NV 89512		
<b>Project Name:</b>	Washoe County Parks and Open Space Weed Treatment and Revegetation Project along the Truckee River		
<b>Amount requested: \$45,000</b>	<b>Website: <a href="https://www.washoecounty.us/parks/">https://www.washoecounty.us/parks/</a></b>		
<b>This funding will be used to (complete this sentence with a max of 2 sentences):</b>	This funding will be used to remove noxious weeds and re-establish native vegetation in Washoe County Parks and Open Space areas along the Truckee River and its tributaries. The project includes weed inventory, GIS mapping, chemical and mechanical treatments, re-vegetation, and monitoring.		
<b>Key People:</b>	<b>Director:</b>	David Solaro, Assistant County Manager/Director of Community Services Department	
	<b>BoardChair:</b>		
	<b>Project Contact:</b>	<b>Name:</b>	Joanne Lowden
		<b>Position:</b>	Natural Resource Planner
		<b>Phone:</b>	(775) 328-2039
		<b>Fax:</b>	(775) 328-3699
		<b>Email:</b>	JLOWDEN@WASHOECOUNTY.US
<b>Organization Mission:</b>	Our mission is to provide exceptional parks, open space and recreational opportunities while preserving our natural, historical and cultural resources.		
<b>Has your organization received other grants from the Truckee River Fund?</b> <b>Yes X*</b> <b>No</b>	*In partnership with the Nevada Land Trust (Lynda Nelson). For prior year grants, grantee may have been Washoe County or Nevada Land Trust.		
	Date awarded:		
	Project title:		
	Amount of Award:		
	Date awarded:		
	Project title:		
	Amount of Award:		
	Date awarded:		
	Project title:		
	Amount of Award:		

## DESCRIPTION OF PROJECT UNDER CONSIDERATION

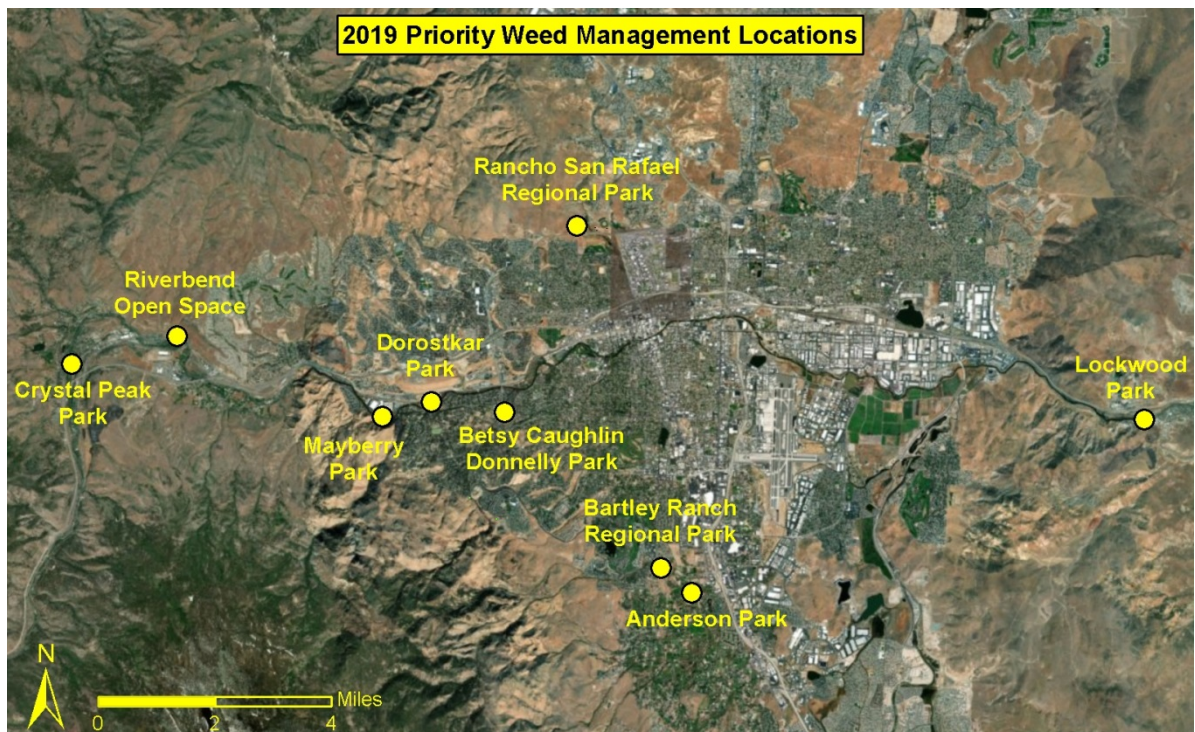
- ☒ A. Projects that improve bank or channel stabilization and decrease erosion.
- ☐ B. Structural controls or Low Impact Development (LID) projects on tributaries and drainages to the Truckee River where data supports evidence of pollution and/or sediments entering the Truckee River.
- ☐ C. Projects that remove pollution from the Truckee River.
- ☒ D. Projects that remove or control invasive aquatic species or terrestrial invasive plant species that are adverse to water supply.
- ☐ E. Other projects that meet the evaluation criteria.

## PROJECT NARRATIVE

- 1. Project Goals and Measurable Outcomes and How You Will Measure and Report Them** Project goals include identifying, mapping, and treating noxious weeds in Washoe County Parks and Open Spaces along the Truckee River corridor. Inventories would be conducted to determine the location and size of weed infestations. Pre-treatment maps would be generated showing the number of acres inventoried and the number of acres needing treatment. Success of weed treatments would be evaluated by visually estimating the amount of dead weed vegetation or eliminated weeds in the treatment areas compared to pre-treatment levels (expressed as a percentage). In addition to weed treatments, project goals include re-establishment of native vegetation through seeding and planting container stock. Success of seeding and planting efforts would be monitored over subsequent years. Results would be measured by the total number of acres inventoried, treated, seeded, and planted. Results would also include the estimated success rate of weed treatments.
- 2. Project Location** The project would be located in several Washoe County Parks and Open Space areas along the Truckee River and its tributaries. Priority treatment areas identified for 2019 include Crystal Peak Park (Verdi, NV), Riverbend Open Space (Verdi, NV), Mayberry Park (Reno, NV), Dorostkar Park (Reno, NV), Betsy Caughlin Donnelly Park (Reno, NV), Bartley Ranch Regional Park (Reno, NV), Anderson Park (Reno, NV), Rancho San Rafael Regional Park (Reno, NV), and Lockwood Park (Sparks, NV).
- 3. Project Description** This project would remove noxious and invasive weeds and re-establish native vegetation in Washoe County Parks and Open Space areas along the Truckee River corridor. Project implementation would include weed inventory, GIS mapping and reporting, chemical and mechanical treatments, re-vegetation, and monitoring. A combination of Washoe County staff time, contracts, and volunteer efforts would be used to implement the project. In previous years, a majority of the weed inventory and treatment in Washoe County Parks and Open Spaces along the Truckee River was conducted by the Nevada Land Trust using Truckee River Funds and in partnership with the Nevada Division of Forestry (NDF) using Medusahead Grant funds. Since the Nevada Land Trust weed program has ended, Washoe County Parks would like to continue with noxious weed monitoring and treatments to improve fish and wildlife habitat, enhance recreational opportunities, improve water quality through soil stabilization, reduce fire hazard, and increase the visual quality of parks.

Priority treatment areas identified for 2019 include Crystal Peak Park, Riverbend Open Space, Mayberry Park, Dorostkar Park, Betsy Caughlin Donnelly Park, Bartley Ranch Regional Park, Anderson Park, Rancho San Rafael Regional Park, and Lockwood Park. Each of these parks was inventoried and treated at least once between 2015 and 2017. Previous treatment areas would be monitored and new weed infestations would be documented as part of inventory efforts. Pre-treatment maps would be generated showing the number of acres inventoried and the number of acres needing treatment. A variety of treatments may be used including mowing, hand pulling, and herbicide application. Target weed species based on past data include, but are not limited to, hoary cress (*Cardaria draba*), musk thistle (*Carduus nutas*), diffuse knapweed (*Centaurea diffusa*), yellow starthistle (*Centaurea solstitialis*), Canada thistle (*Cirsium arvense*), poison hemlock (*Conium maculatum*), perennial pepperweed (*Lepidium latifolium*), purple loosestrife (*Lythrum salicaria*), scotch thistle (*Onopordum acanthium*), teasel (*Dispacus spp.*), and medusahead (*Taeniatherum caput-medusae*).

Re-vegetation efforts would include seeding and planting of native vegetation and be focused on areas with larger weed infestations and areas with previous disturbances such as wildfire. The Caughlin Fire burned in Bartley Ranch Regional Park in 2011 and restoration efforts have been ongoing. Approximately 22 acres of upland area along the Last Chance and Lake Ditches would be a priority area for weed treatments and re-vegetation. Washoe County Parks used Nevada Division of Forestry Medusahead Grant funding to obtain native seed mix and Washoe Nursery native plant stock. These materials would be used for re-vegetation projects between Fall of 2019 and Spring of 2020. Monitoring of re-vegetation sites would occur for several years post-treatment to determine if the plantings are successful.



- 4. Grant Priorities** The proposed project advances Truckee River Fund grant priorities II, IV, VII, and VIII. Managing noxious weeds and re-establishing native vegetation along the Truckee River corridor helps to improve water quality by stabilizing soils and reducing erosion potential and sedimentation as identified in Priority II. The proposed project advances Priority IV through re-vegetation of upland areas which will help to improve watershed resiliency and targeted efforts in Bartley Ranch Regional Park which will focus on restoring native upland vegetation in a previously burned area. Priority VIII is advanced through Washoe County's partnership with multiple stakeholders including the Nevada Land Trust (One Truckee River Initiative), Keep Truckee Meadows Beautiful, Nevada Department of Wildlife, Nevada Department of Agriculture, and Nevada Division of Forestry to identify restoration needs and leverage funding sources for projects in the Truckee River Corridor.
- 5. Permitting** Permits are not required for the proposed project.
- 6. Future Land Use** No known or reasonably foreseeable zoning, land use, or development plans would affect the proposed project.
- 7. Future Phases** Monitoring and treating noxious weeds in Washoe County Parks and Open Spaces is an ongoing effort that will continue into future years. Washoe County will continue working with the Washoe Storey Cooperative Weed Management Area group and partners such as the Nevada Land Trust, Keep Truckee Meadows Beautiful, Nevada Department of Wildlife, Nevada Department of Agriculture, and Nevada Division of Forestry to identify and leverage funding sources as they become available.
- 8. Principals Involved** Joanne Lowden, Natural Resource Planner for Washoe County Parks and Open Space, will be the project manager. Joanne is a member of the Washoe Storey Cooperative Weed Management Area group and attends quarterly meetings. She is currently a certified government applicator for restricted use pesticides for both terrestrial and aquatic weeds.
- 9. Staff Positions Involved** At least 5 Washoe County staff positions will be involved part-time with the project including the Natural Resource Planner (Project Manager), District Park Manager, 2 Park Rangers, and the Volunteer Coordinator.
- 10. Volunteers Involved** At least one volunteer planting and seeding event will be planned through the Washoe County Parks Volunteer Coordinator with an estimate of 80 total hours. Additional volunteer events may be coordinated internally or with partners.
- 11. Time Line** Weed inventory and treatments would occur between April 2019 and October 2019. Seeding would take place between November 2019 and January 2020 depending on weather conditions. Some planting may be done in Fall 2019, but a majority would likely occur in Spring 2020 (March – May). A final report would be completed once re-vegetation projects are completed no later than June 30, 2019.

**12. Success** The number of acres inventoried, treated, and re-vegetated would indicate the overall success of the project.

**13. Grant Match**

<b>Match amount to be provided:</b>	<b>\$17,800</b>					
<b>Match details:</b>	<p>Please provide the form of your matching funds. If match is made up of both cash and in-kind, fill in both sections.</p> <p>Match is:</p> <table border="1" data-bbox="456 632 1421 852"> <tr> <td>Cash</td> <td><b>\$16,200</b></td> </tr> <tr> <td>In-kind</td> <td><b>\$1600</b></td> </tr> </table> <p>Note: Volunteer and in-kind hours may be calculated at a maximum rate of \$20/hour per individual. Indirect cost may not be counted as match.</p> <p>For the cash portion of your match, is the funding already being held by the applicant for this project? Yes <u>X</u> No <u>  </u></p>		Cash	<b>\$16,200</b>	In-kind	<b>\$1600</b>
Cash	<b>\$16,200</b>					
In-kind	<b>\$1600</b>					
<b>Description of matching funds/in-kind donations:</b>	<p><b><u>Cash Contributions:</u></b></p> <p><b>\$4,320</b> Medusahead Grant (NDF) funds were used to purchase native seed mix for coverage of 15 acres or more (\$288 per acre).  <b>\$5,000</b> Medusahead Grant (NDF) funds were used to purchase 2,500 container plants from the Washoe Nursery (\$2 per plant).  <b>\$6,880</b> Washoe County paid staff labor (160 hrs.) includes staff time for project management, weed inventory, GIS mapping and reporting, weed and re-vegetation treatments, and coordinating volunteer events.</p> <p><b><u>In-Kind:</u></b></p> <p><b>\$1,600</b> Volunteer labor (80 hrs. @ \$20/hr.) for volunteer seeding and planting event(s).</p>					

#### 14. Project budget

<b>Budget Item Description</b>	<b>TRF \$</b>	<b>Other Funding Name</b>	<b>Match \$</b>	<b>Total</b>
Materials – seed (for 15 acres)	\$0	Medusahead Grant (NDF)	\$4,320	\$4,320
Materials – plants (2,500 plants)	\$0	Medusahead Grant (NDF)	\$5,000	\$5,000
Staff Labor – paid (160 hrs.)	\$0	Washoe County	\$6,880	\$6,880
Volunteer Labor (80 hrs. - \$20/hr.)	\$0	Washoe County	\$1600	\$1600
Contract – Labor and materials	\$45,000		\$0	\$45,000
<b>TOTAL</b>	<b>\$45,000</b>		<b>\$17,800</b>	<b>\$62,800</b>