

STEPS TO BUILDING YOUR CHARTERS OF FREEDOM SETTING IN YOUR COMMUNITY

PHASE ONE - INTRODUCTION, PRESENTATIONS, PLANNING

Step One – Foundation Forward, Inc. will work with your County or City Administrator to add the Presentation to the public agenda of the meeting of the governing body – County Commissioner's Meeting or City Council Meeting.

Step Two – Following the Presentation to the governing body in general session, Foundation Forward will propose the governing body consider accepting the gift from Foundation Forward on behalf of The Children and Citizens of The Community, and commit to providing a site suitable for the setting.

Step Three – Letters of Intent will be exchanged and the project will begin.

PHASE TWO - COMMUNITY SUPPORT AND FUNDING

1. Community Support is crucial for a successful setting, not only for funding if needed, but for the community to take ownership of the setting once it is completed.
2. A Leader is required to make this work. This person must have a passion for the project, be a respected member of the community and have a network of good contacts.
3. A local bank account is set up to accept local donations.

Types of Support:

1. Donors of materials and labor – concrete, rebar, concrete labor, brick, brick masons.
2. Individual Donors
3. Corporate Donors
4. Legacy Donors – Names on Dedication Plaque
5. Engraved Brick Donors – Names are built into back of settings.

PHASE THREE - CONSTRUCTION

Step One – Site is cleared and prepared for excavation.

Step Two – Excavation to 3' and rebar is set, concrete is poured – 4,000 psi+

Step Three – Core is formed, rebar is set, concrete is poured – 4,000 psi+

Step Four – Brick fascia is installed.

Step Five – Document Chambers are set, Bronze Documents are set, Polycarbonate and Trim are set.

Step Six – Plaques are installed.

Step Seven – Cleanup, and landscaping if desired.

PHASE FOUR - DEDICATION

Step One – Decide on a date.

Step Two – Coordinate with Foundation Forward for Programs and suggested agenda based on past dedications.



VARIOUS SETTINGS

All settings have the same basic components:

1. Solid Foundation going down 3' into the ground with reinforced poured concrete.
2. Solid Core with reinforced poured concrete.
3. Six Founding Documents on $\frac{1}{4}$ " routed bronze plates – each weighing over 60 lbs.
4. Vault embedded in the back of the center setting, with time capsule.
5. Document chambers are covered with $\frac{1}{2}$ " treated polycarbonate and framed.
6. Five bronze plaques are installed.

The difference in the settings is the fascia selections. They are as follows, with estimated costs:



BRICK SETTING WITH PAINTED STONE CAP



BRICK SETTING WITH LIMESTONE CAP
ADDITIONAL \$15,000



LIMESTONE SETTING
ADDITIONAL \$41,000



GRANITE SETTING
ADDITIONAL \$48,500



CHARTERS OF FREEDOM REFERENCES

1. Burke County
Morganton, North Carolina

Commissioner Johnnie Carswell - Chairman
Morganton, NC 28655
828-433-9702
Johnnie.Carswell@Burkenc.org

Commissioner Wayne Abele
Morganton, NC 28655
828-391-8515
Wayne.Abele@Burkenc.org

2. Buncombe County
Asheville, North Carolina

Commissioner David Gantt - Chairman
828-252-2852
commissioner@davidgantt.com

Commissioner Joe Belcher - District 3
828-250-4008
Joe.belcher@buncombecounty.org

County Manager Wanda Greene
828-250-4100
Wanda.greene@buncombecounty.org

3. Cherokee County
Murphy, North Carolina

Commissioner C.B. McKinnon - Chairman
828-837-3528
cb.mckinnon@cherokeecounty-nc.gov

Mayor Bill Hughes
828-837-2510
2bhughes@frontier.net

4. Howard County
Kokomo, Indiana

Commissioner Paul Wyman - President
The Wyman Group
765-419-1021
pwyman8@aol.com

5. Morgan County
Jacksonville, Illinois

Mayor Andy Ezard
Jacksonville, Illinois
217-479-4610
mayor@jacksonvilleil.com

6. Bertie County
Windsor, North Carolina

Commissioner Tammy Lee - Chairman
252-325-4125
commissioners@bertie.nc.gov

Sheriff John Holley
252-794-5330
john.holley@bertie.nc.gov

7. Jackson County
Sylva, North Carolina

Commissioner Brian McMahan - Chairman
828-508-1466
brianmcmahan@jacksonnc.org

Roy Burnette - WRGC Radio Station
828-586-2221
rburnette@wrgc.com

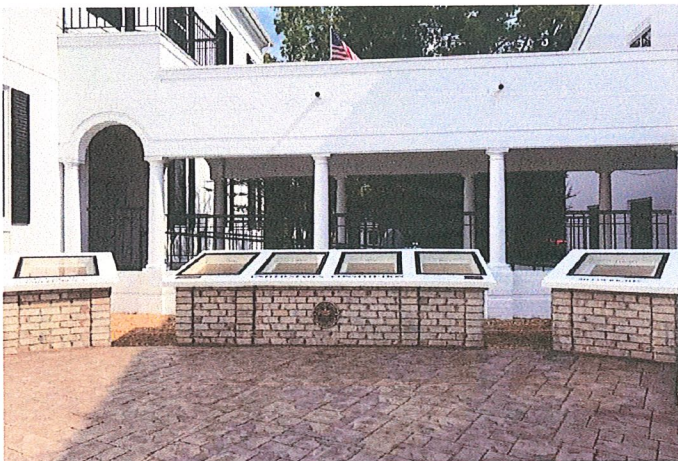


COST ESTIMATES OF VARIOUS SETTINGS

All settings have the same basic components:

1. Solid Foundation going down 3' into the ground with reinforced poured concrete.
2. Solid Core with reinforced poured concrete.
3. Six Founding Documents on ¼" routed bronze plates – each weighing over 60 lbs.
4. Vault embedded in the back of the center setting, with time capsule.
5. Document chambers are covered with ½" treated polycarbonate and framed.
6. Five bronze plaques are installed.

The difference in the settings is the fascia selections. They are as follows, with estimated costs:



BRICK SETTING WITH PAINTED STONE CAP
ESTIMATED \$18,000 - \$22,000



BRICK SETTING WITH LIMESTONE CAP
ESTIMATED \$33,000 - \$37,000



LIMESTONE SETTING
ESTIMATED \$59,000 - \$63,000



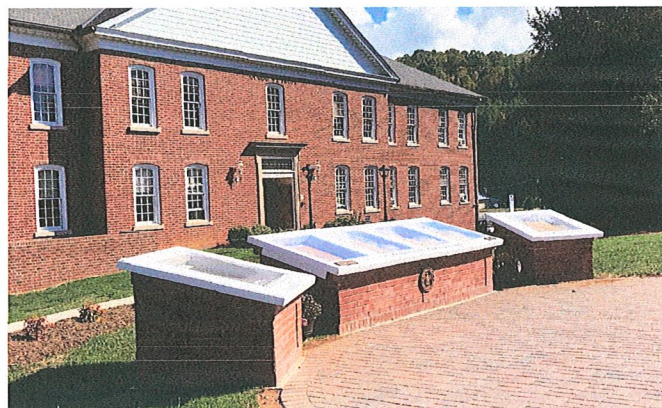
GRANITE SETTING
ESTIMATED \$66,500 - \$70,500



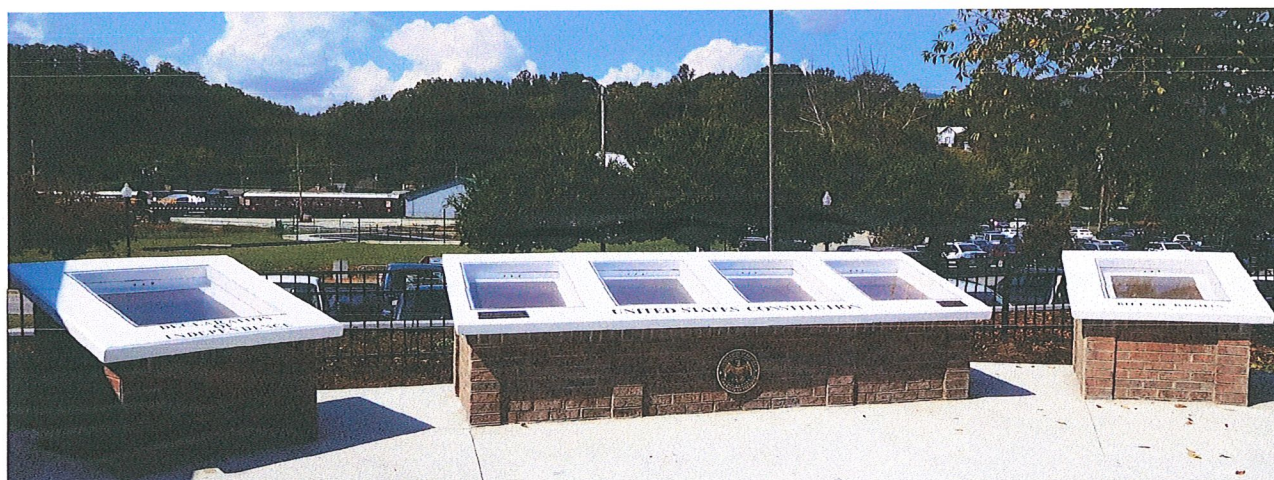
COMPLETED PROJECTS



Hanover College Students



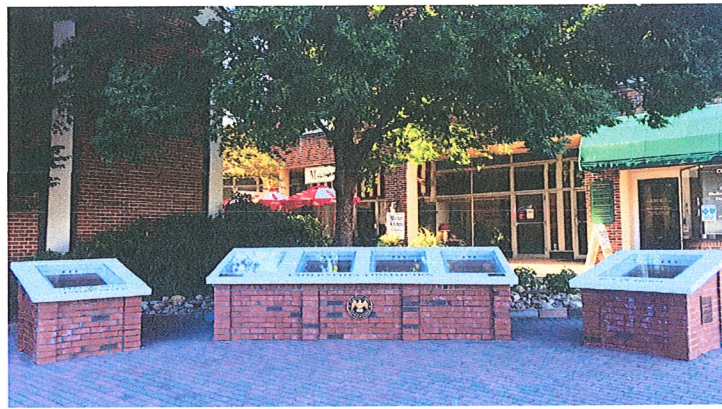
Burnsville, North Carolina
Yancey County
Dedicated September 25, 2017



Bryson City, North Carolina
Swain County
Dedicated September 28, 2017



Bryson City, NC JROTC



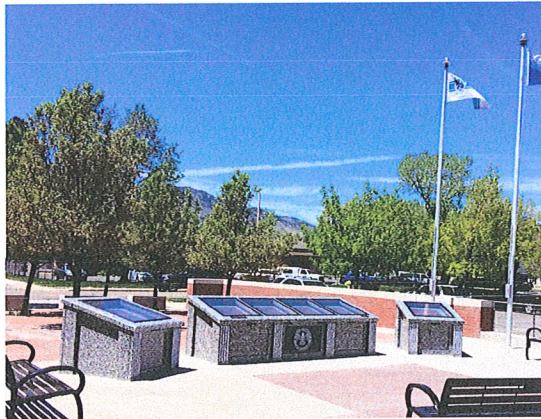
Franklin, North Carolina
Macon County
Dedicated November 11, 2017



COMPLETED PROJECTS



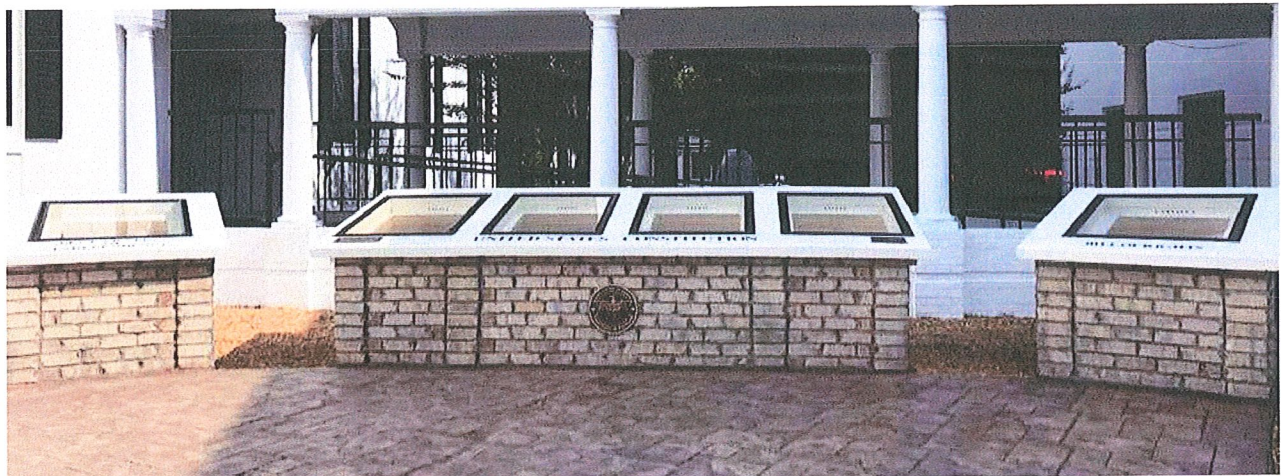
Fort Thomas, Kentucky
Campbell County
Dedicated July 4, 2017



Carson City, Nevada
Dedicated June 14, 2018



Sylva, North Carolina
Jackson County
Dedicated May 19, 2017



Windsor, North Carolina
Bertie County
Dedicated August 24, 2017



CAPITAL BUDGET AND REVENUE STATEMENT

	2017	2018	2019
SETTINGS	15	25	35
SETTING CONSTRUCTION			
Site Work	7500	12500	17500
Foundation and Core	62460	104100	145740
Stone Work Granite	48500	145500	242500
Stone Work Limestone	48500	97000	97000
Brick Fascia with Cast Stone Cap	126100	47160	70740
Documents	115200	51750	72450
Glazing	29910	49850	69790
Plaques	15420	25700	35980
Vault and Time Capsule	5610	9350	13090
Trim	1650	2750	3850
TOTAL SETTING CONSTRUCTION	\$ 460,850	\$ 545,660	\$ 768,640
Average Cost per Setting	\$ 30,723.33	\$ 21,826.40	\$ 21,961.14

OPERATIONS			
Executive	0	0	0
Management	60000	70000	80000
Personnel	110000	230000	230000
Taxes	56100	99000	102300
Rent	6420	0	0
Travel	9600	11000	13000
Insurance	5400	6500	7000
Office Supplies	3000	4500	5500

TOTAL OVERHEAD	\$ 250,520	\$ 421,000	\$ 437,800
Monthly Overhead Cost	\$ 20,876.67	\$ 35,083.33	\$ 36,483.33

TOTAL ANNUAL CAPITAL REQUIRED	\$ 711,370	\$ 966,660	\$ 1,206,440
--------------------------------------	------------	------------	--------------

REVENUE	2017	2018	2019
SETTINGS	15	25	35
SETTINGS REVENUE			
Local Contributions of Material	37341	82980	124470
Community Support - Local Donations	161000	430000	602000
Corporate Funding - Local	20000	20000	40000
Stakeholders Certificate Funding	30000	160000	200000
Grants	10000	35000	50000
Individual Donations	0	30000	45000
Corporate Sponsors - National	0	20000	40000
Founders Donations	202509	25000	35000

TOTAL SETTINGS FUNDS	\$ 460,850	\$ 802,980	\$ 1,136,470
-----------------------------	------------	------------	--------------

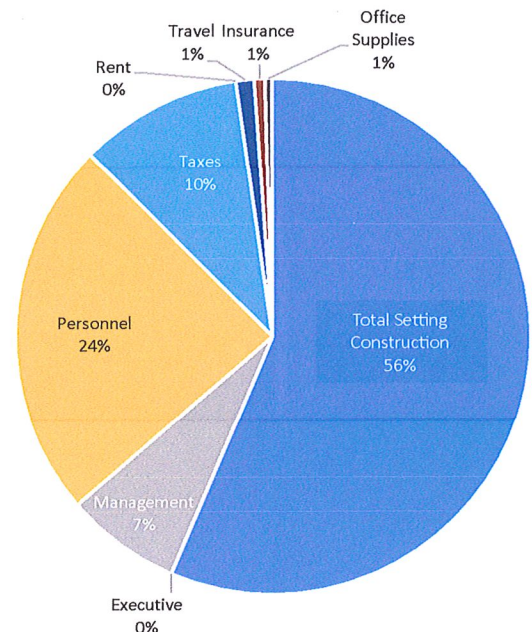
OPERATIONS FUNDING			
Founders Donations	250520	421000	437800

TOTAL OPERATING FUNDS	\$ 250,520	\$ 421,000	\$ 437,800
------------------------------	------------	------------	------------

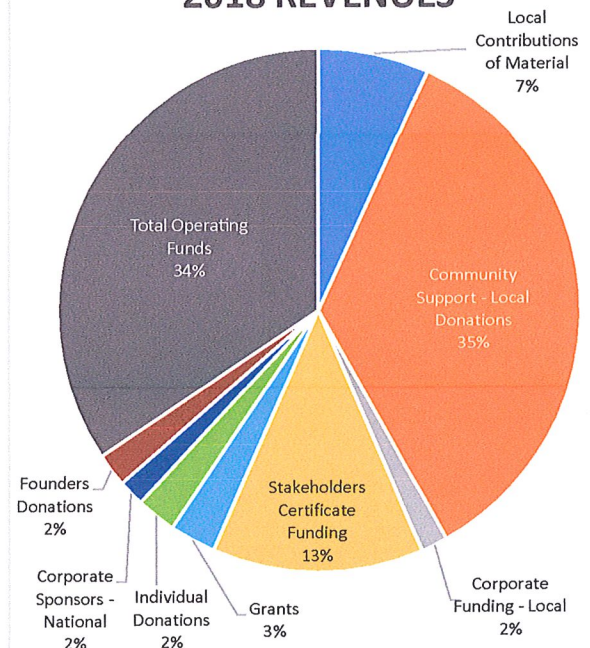
TOTAL FUNDS	\$ 711,370	\$ 1,223,980	\$ 1,574,270
--------------------	------------	--------------	--------------

OVER (UNDER)	\$ -	\$ 257,320	\$ 367,830
---------------------	------	------------	------------

2018 EXPENSES



2018 REVENUES



SATISFIED COMMUNITY SUPPORTERS

Anna A. Payne – Murphy, NC, Town Manager, Cherokee County: "Mayor Hughes wanted me to let you know things here are fine. The Charters are a big attraction. Our local Boy Scout Troop has taken it upon themselves to clean the glass on a weekly basis. Thanks again."

Brian McMahan – Sylva, NC, Chairman, Jackson County Commissioners: "A heartfelt thanks to all who helped make the event and project a success. Please share my thank you with everyone at Foundation Forward."

Jerry Ollis – Vice President, Entegra Bank, Sylva, NC, Jackson County: "A heartfelt thank you for how you have been so instrumental in bringing to the children and people of Jackson County. These Charters of Freedom will be enjoyed by many for years to come. I so clearly remember when this project started last year and to see it come to fruition is very touching to me. I commend you for your dedication to a project such as this and making this a reality for people across this country to appreciate and enjoy."

Paul Wyman – Kokomo, IN, Howard County Commissioner: "My Dad always told me when I was growing up, if something sounds too good to be true, it probably is. But, this was one of those times when it sounded too good to be true, but it really was true." "Their (Pattersons') passion for our country and these documents overwhelmed me in my conference room and so we began the journey..."

Joe Belcher – Asheville, NC, Buncombe County Commissioner: I have as much fun as the kids when they visit the monument because I enjoy meeting the groups and sharing the history behind the documents. I am very impressed with the interest of the visiting students. It really gives me a sense of patriotic pride to see the students so involved. I really appreciate having the monument available for the children and citizens of Buncombe County."

