



Nevada Shared Radio System (NSRS) Update

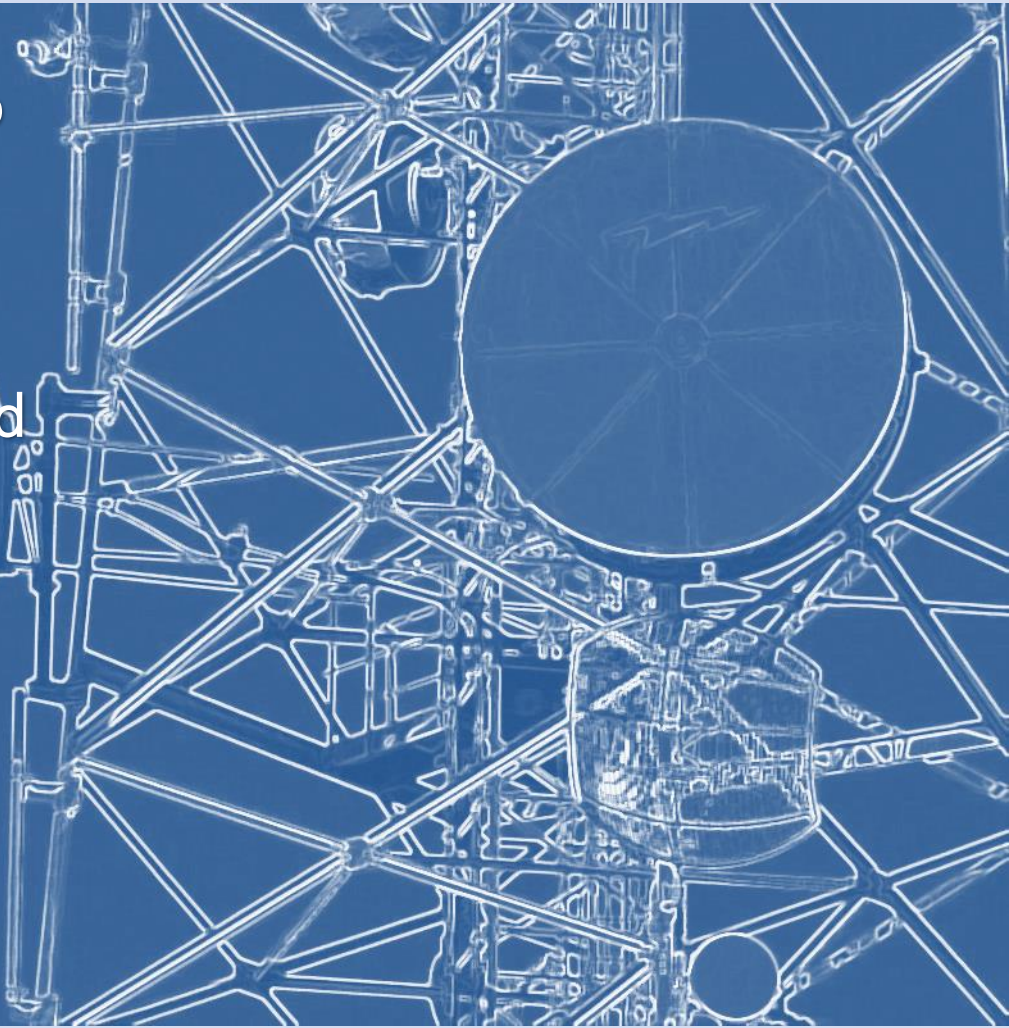
July 24, 2018





NSRS History

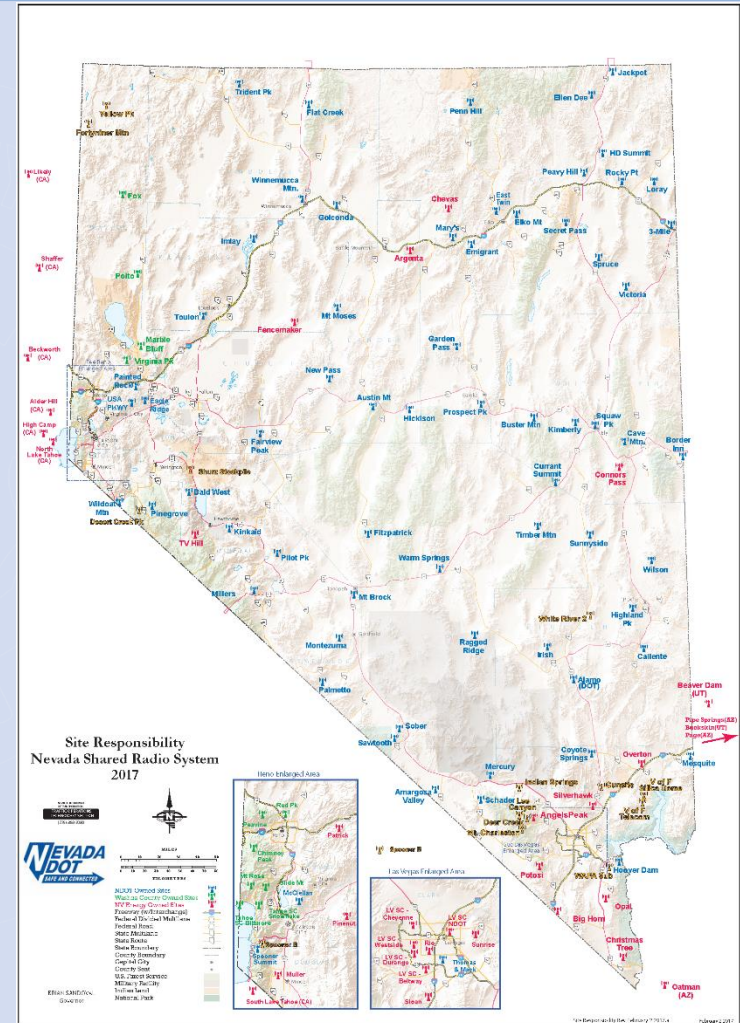
- 1990: 800 MHz trunked radio system established
- Three Partners: NDOT, NV Energy and Washoe County
- Manufacturer announced end of life in 2017
- Decision made to establish process to replace the existing radio system
- Memorandum of Understanding established with three partners





System Map

- 114 Sites Statewide
- Infrastructure ownership:
 - NDOT – 67 sites
 - NV Energy – 36 sites
 - Washoe County - 11 sites
- Approximately 16,000 Statewide Users
 - Approx. 6,000 are Washoe County Regional Communications System users





Project Phases

■ Phase 1 (Completed, March 2015)

- Needs assessment completed by AECOM regarding the migration of the current NSRS.

■ Phase 2 (in progress)

- Establish NSRS Governance Structure and develop member contract.
- Identify and develop contract with equipment provider for new system.

■ Phase 3

- Implementation of statewide radio system - May take up to seven years to complete.



Project Phases – Phase 2

■ Phase 2 Timeline

– Completed

- Project Kick Off Meeting – 12/3/2015
- NSRS Governance Report – 4/8/2016
- NSRS Contract signed – 5/09/2017
- Release Radio System RFP & review vendor proposals – May 2017 to February 2018
- Letter of Intent sent to Harris Corp. 2/21/2018

– In Progress

- Contract negotiations with Harris Corp. (expected completion – August 2018)





Project Phases – Phase 3

■ Phase 3 Timeline

- Detailed System Design - Spring 2019
- Start Site Construction/assembly, Southern Nevada – Spring 2020
- Start Site Construction/assembly, Northern Nevada – 2021
- Final System Acceptance and project completion - 2024



New System Benefits and Features

- Virtually Unlimited User Capacity
- Open Standard – Project 25 (P25)
 - Increased/Improved Coverage
- Seamless Statewide coverage for all users
 - Manufacturer support



Questions?

Quinn Korbulic, PhD.

IT Manager,

Technology Services

qkorbulic@washoecounty.us

(775) 328-2348

