

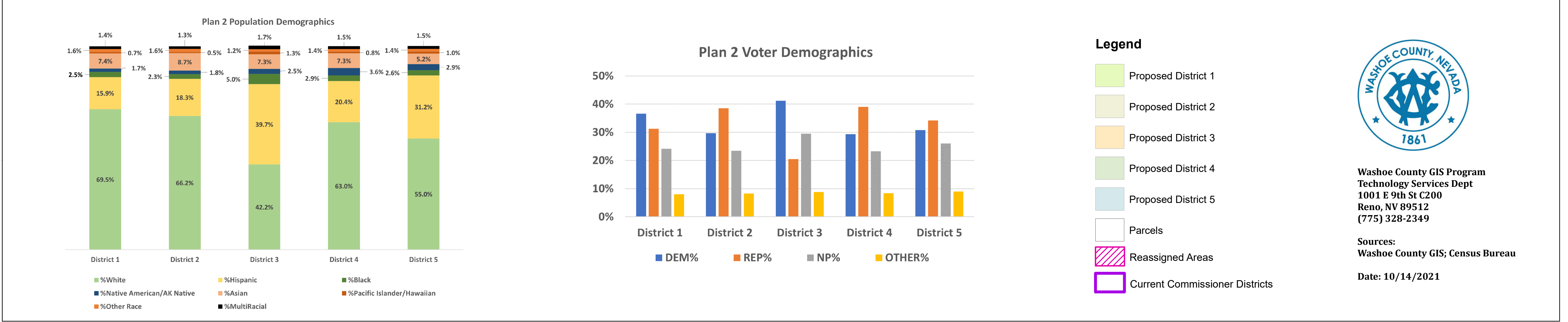
Washoe County Commissioner Districts 2021 Redistricting Draft Plan Version 2

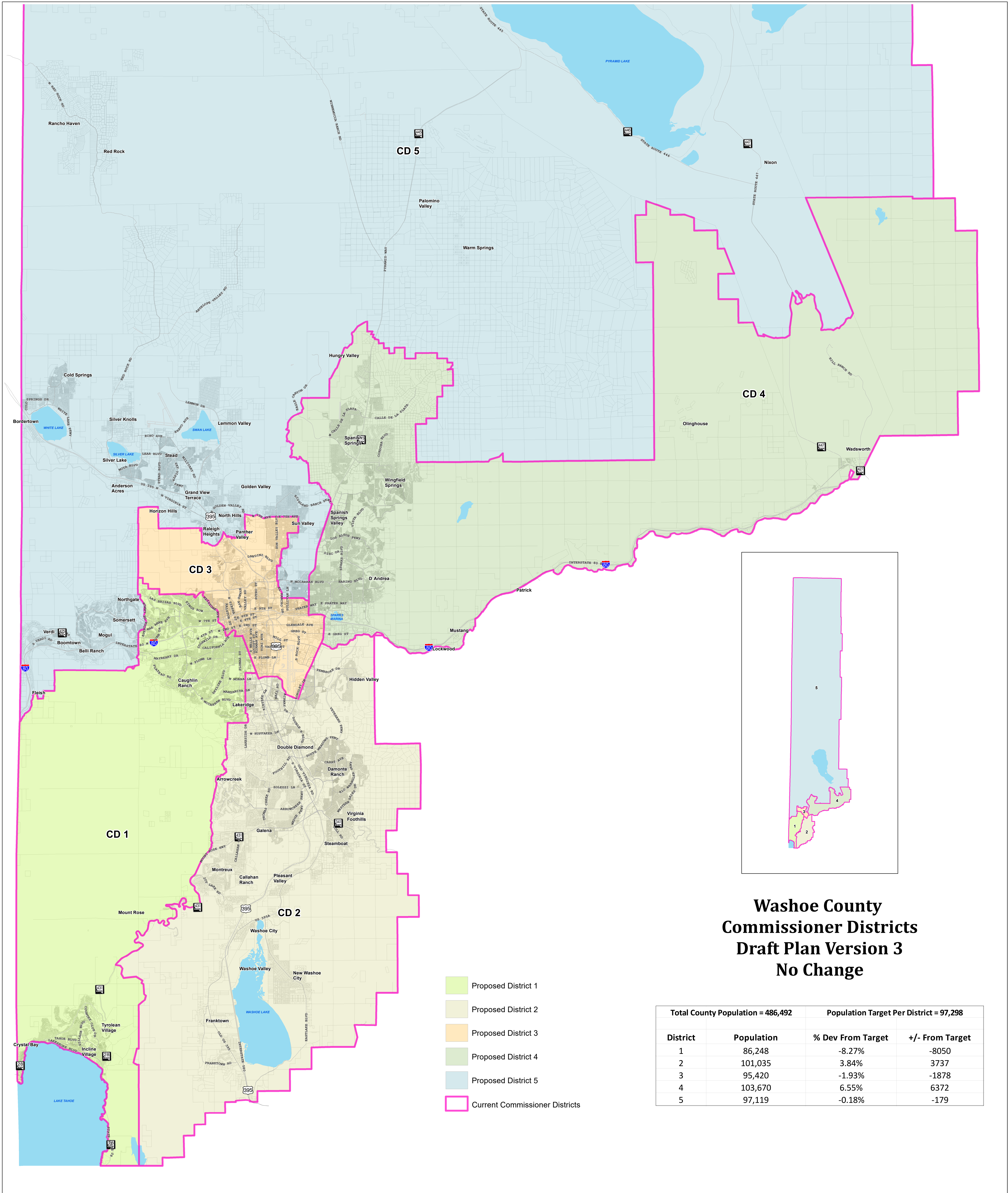
Total County Population = 486,492		Population Target Per District = 97,298	
District	Population	% Dev From Target	+/- From Target
1	96,222	-1.11%	-1,076
2	97,817	0.53%	519
3	96,959	-0.35%	-339
4	97,521	0.23%	223
5	97,973	0.69%	675

Draft Plan Version 2 Reassigned Population Totals			
Area	From District	To District	Total Moved
A	CD5	CD1	2,272
B	CD5	CD1	680
C	CD3	CD1	259
D	CD2	CD1	3,218
E	CD3	CD5	17,883
F	CD5	CD3	8,957
G	CD5	CD4	3,258
H	CD5	CD4	0
I	CD4	CD3	11,404
J	CD5	CD4	1,997

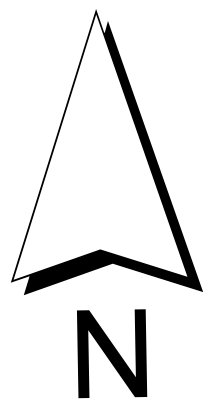
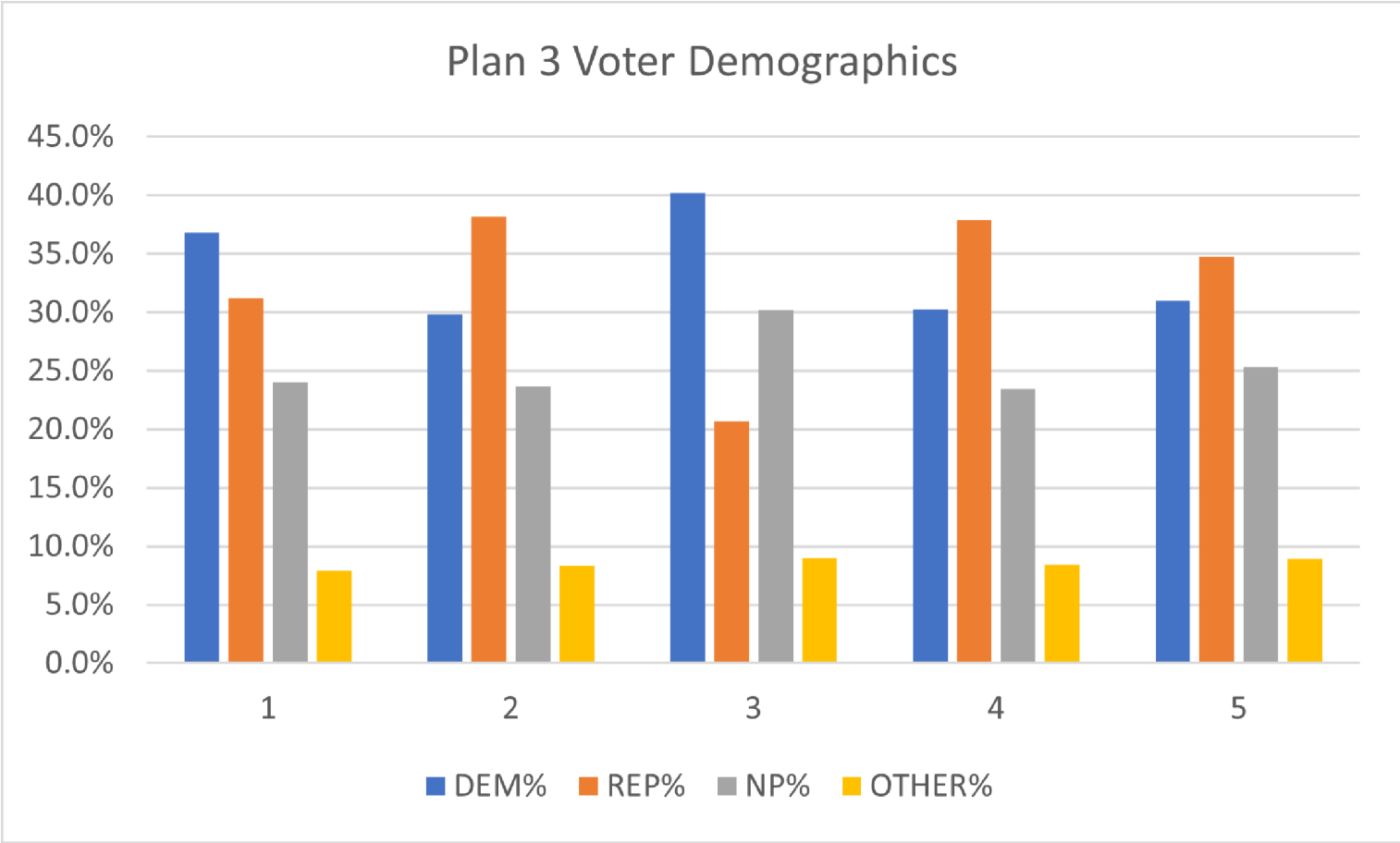
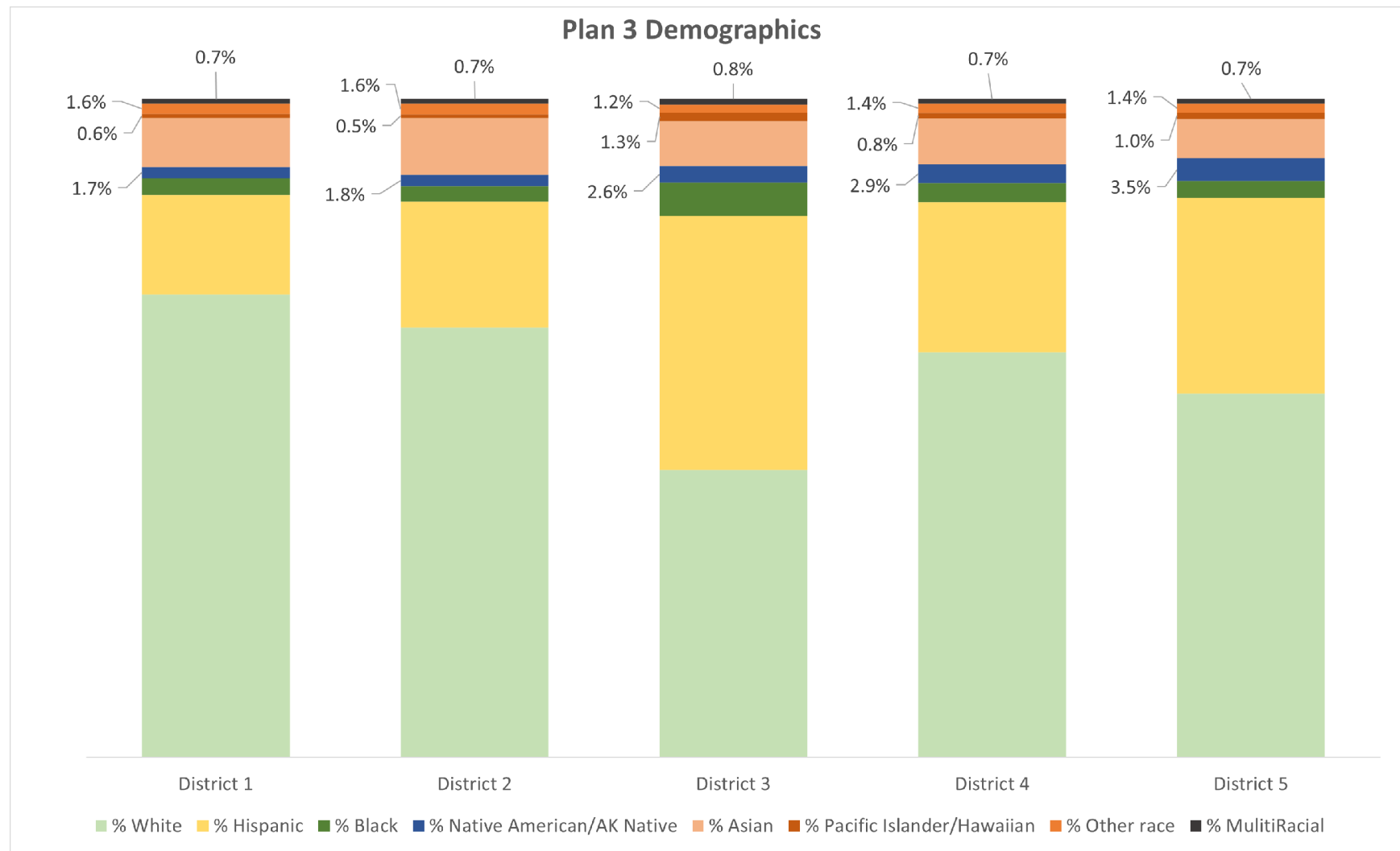
How To Use This Map

Yellow letters on the map refer to the table above that explains areas and population totals that will be reassigned if this draft plan version is approved.





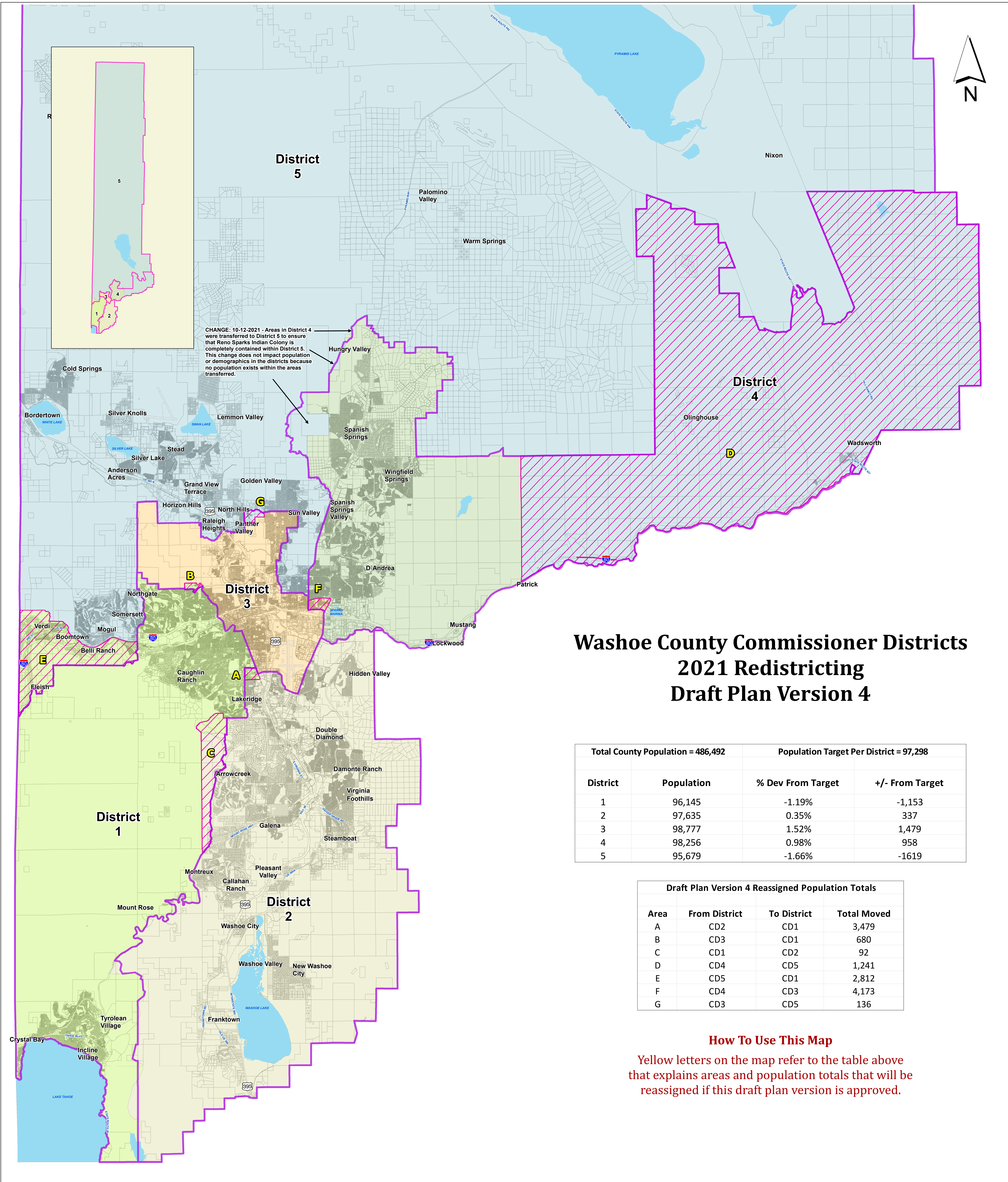
Total County Population = 486,492		Population Target Per District = 97,298	
District	Population	% Dev From Target	+/- From Target
1	86,248	-8.27%	-8050
2	101,035	3.84%	3737
3	95,420	-1.93%	-1878
4	103,670	6.55%	6372
5	97,119	-0.18%	-179



Washoe County GIS Program
Technology Services Dept
1001 E 9th St C200
Reno, NV 89512
(775) 328-2349

Sources:
Washoe County GIS; Census Bureau
Date: 9/22/2021



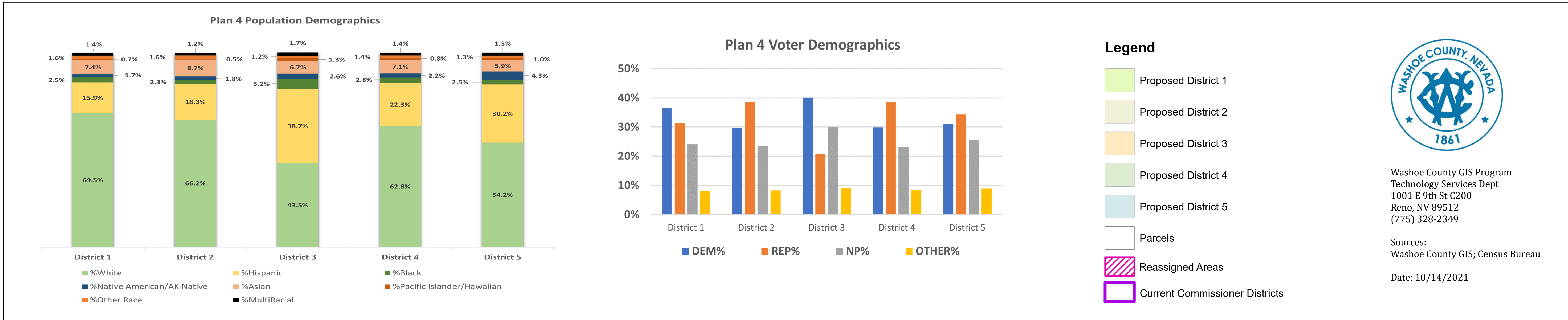


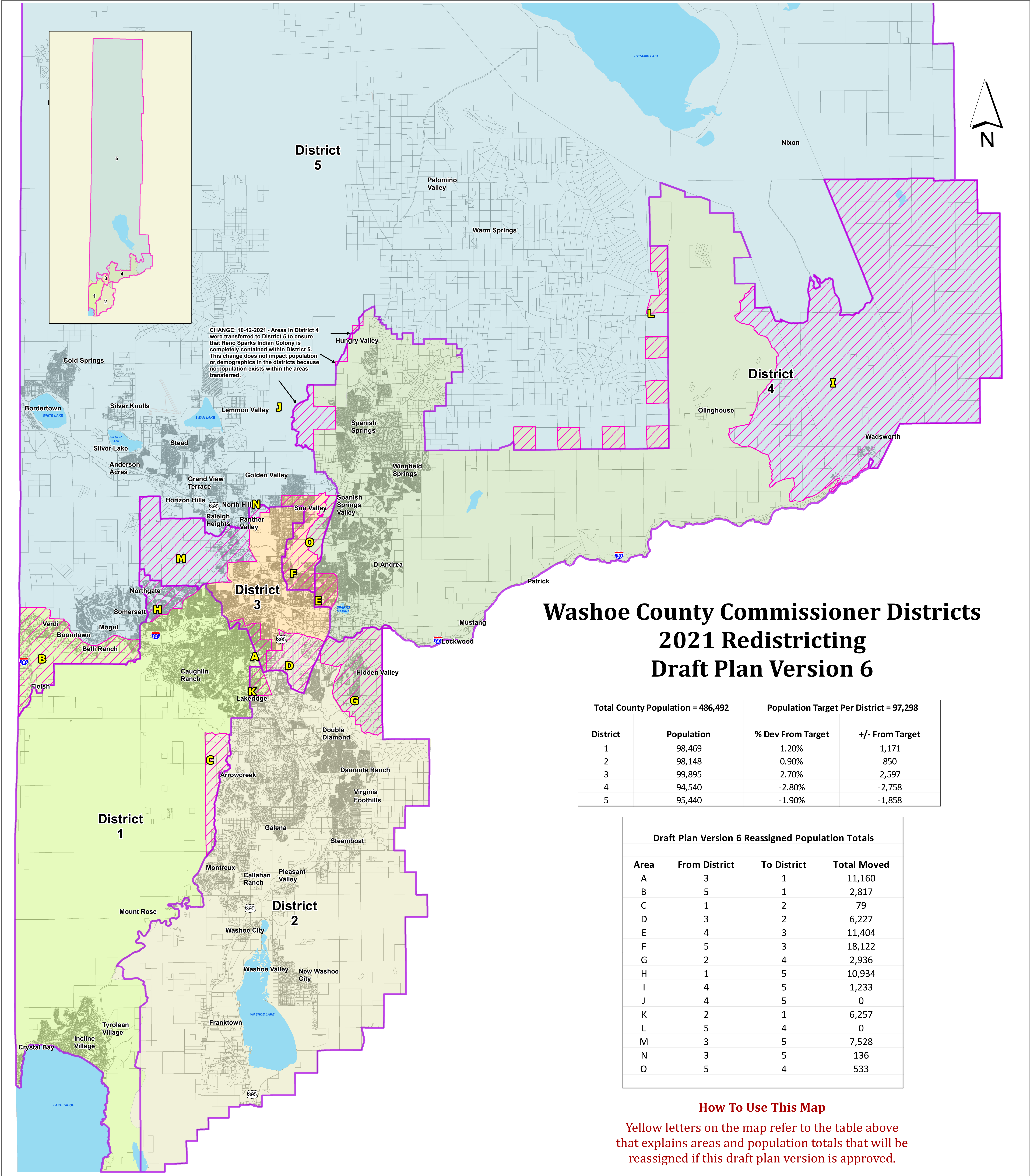
Washoe County Commissioner Districts 2021 Redistricting Draft Plan Version 4

Total County Population = 486,492		Population Target Per District = 97,298	
District	Population	% Dev From Target	+/- From Target
1	96,145	-1.19%	-1,153
2	97,635	0.35%	337
3	98,777	1.52%	1,479
4	98,256	0.98%	958
5	95,679	-1.66%	-1619

Draft Plan Version 4 Reassigned Population Totals			
Area	From District	To District	Total Moved
A	CD2	CD1	3,479
B	CD3	CD1	680
C	CD1	CD2	92
D	CD4	CD5	1,241
E	CD5	CD1	2,812
F	CD4	CD3	4,173
G	CD3	CD5	136

How To Use This Map
Yellow letters on the map refer to the table above that explains areas and population totals that will be reassigned if this draft plan version is approved.





Washoe County Commissioner Districts 2021 Redistricting Draft Plan Version 6

Total County Population = 486,492		Population Target Per District = 97,298	
District	Population	% Dev From Target	+/- From Target
1	98,469	1.20%	1,171
2	98,148	0.90%	850
3	99,895	2.70%	2,597
4	94,540	-2.80%	-2,758
5	95,440	-1.90%	-1,858

Draft Plan Version 6 Reassigned Population Totals			
Area	From District	To District	Total Moved
A	3	1	11,160
B	5	1	2,817
C	1	2	79
D	3	2	6,227
E	4	3	11,404
F	5	3	18,122
G	2	4	2,936
H	1	5	10,934
I	4	5	1,233
J	4	5	0
K	2	1	6,257
L	5	4	0
M	3	5	7,528
N	3	5	136
O	5	4	533

How To Use This Map

Yellow letters on the map refer to the table above that explains areas and population totals that will be reassigned if this draft plan version is approved.

