

Exhibit A: Standards

Turf Standards

Turf will be healthy with a smooth surface and uniform green color. Turf will not exhibit bare spots and will be weed and pest free as identified in the standards .

Task	Description	Frequency	Season (approximate)
Mowing	Even height, complete coverage, uniform cutting, growth kept off pavement. Remove clippings if necessary in high visibility areas. Height range: 2 1/2 to 3 inches.	1/ week	April-October
Thatch	Remove dead layer where 1" or more shows.	1/year if needed	March
Aerate	Core aeration 3" depth, pick up cores in areas that are visible to the public.	2/season on other high use areas 1/season all others	Early Spring early Summer and Fall
Fertilize	Use balanced or slow release fertilizer at rate of ¼ to 1 lb. N/1000sq ft	3/Season	Spring/Summer
Irrigate	Inspect for proper coverage and function and adjust or repair as necessary. Turf shall be irrigated according to schedules and rates approved by TMWA. Turf shall not have dry spots or be overwatered.	1/week	March-October
Pest Control	Correct identification and proper control methods. Control pests using Integrated Pest Management methods whenever possible. Use of Chemical, mechanical, cultural or biological when appropriate. Chemical applications used according to legal requirements as defined on label.	As needed	March-October
Edge	All Turf abutting concrete walls	2/month	March-October
Trim	All grass around fences, sprinkler heads, borders, valve boxes, signs, posts etc.	2/month or when conditions dictate	March-October
Top dress	Soil spread over uneven, rutted areas of turf w/ fine sand or triple mix. Fill holes created by pests. Not to exceed 1/4" in one application	1/year or as conditions dictate	March-October

Exhibit A: Standards

Leaf Removal	Remove all Leaves from Turf	1/week	Spring and Fall
Fallen Tree and Limb Removal	Remove fallen trees and limbs from turf.	As needed	Year round
Litter Removal	All papers, metal, plastic, glass, etc. removed from lawn Empty trashcans	1/week	year round
Over Seeding	Replant all bare areas in turf using Washoe County approved seed.	1/year	March-October

Indoor/Outdoor Planter Beds Standards

Bedding areas will contain healthy, attractive plants that lend variety, color, and interest to the landscape.

Task	Description	Frequency	Season (approximate)
Planting	Plant according to ISA planting specifications.	Location Specific	As needed
Planting Perennials	Plant according to ISA planting specifications. Plant circle area of parking lot at County Complex (main entrance off of 9 St.) with perennials	Annually	Spring
Pruning	Prune according to ISA standards. Prune from a maximum of 8' ladder. Shrubs and trees shall be trimmed to promote visibility to Washoe County Signage. Shrubs and trees shall be trimmed to not hinder parking in Washoe County parking lots. Low lying limbs shall be trimmed over walkways and paths to provide a clear canopy. Trees and shrubs shall be trimmed in an attractive manner by removing dead limbs and foliage.	Shrubs 2/yr Flowers 4-6/season, Trees 1/yr or as needed (outdoor), Indoor shrubs and trees 1/month or as needed	Shrubs: spring and fall, Flowers: Mar to Oct, Trees: Fall (outdoor), Indoor shrubs and trees; year round
Irrigation	Adequate irrigation to sustain health, vigorous plant growth, and sustainability.	Weekly	March-October, Year round for indoor planters
Pest Control	Correct identification and proper control methods. Control pests using Integrated Pest Management methods whenever possible. Use of Chemical, mechanical, cultural or biological when appropriate. Chemical applications used according to legal requirements as defined on label.	as needed (typical)weeds: post emergence 1/ week. Pre-emergence 2/year Insects: 1/ year	Year Round
Fertilize	Use appropriate fertilizer according to plant	2/year for indoor and	March + October

Exhibit A: Standards

		outdoor planters	
Clean-up	Rake leaves, weed, add mulch	Initial Spring clean-	Yearly
Fallen Tree and Limb Removal	Remove fallen trees and limbs from turf.	As needed	Year round
Litter Removal	All papers, metal, plastic, glass, etc. removed from planters & empty trashcans.	Once Per week	Yearly
Tree And plant stakes	Maintenance and removal of tree/plant stakes.	Check as needed	Yearly, year round

Irrigation System Standards			
Irrigation systems will deliver optimum water to each plant type at the lowest cost and with maximum resource efficiency.			
Task	Description	Frequency	Season approximate
Monitor and Adjust system	Observe the system in operation and make adjustments or repairs as needed. Irrigation shall have proper coverage of all plant life and not have areas of overspray.	1/week	Spring-Fall
Adjust Controller	According to schedules and rate approved by TMWA, set irrigation clocks to deliver optimum water supply.	As weather Changes dictate	Spring-Fall
Start-up	Following site specific procedures, restore water service to each site. Ensure all zones are working properly, backflows are not leaking, ensure proper coverage to all plant life, and that systems are leak free. Leaks identified upon start up must be fixed within 1 week.	Once per year	Mar-Apr
Shutdown	Following site specific procedures terminate water service to each site and winterize all pipe and fixtures. Ensure irrigation supply line is fully closed. If irrigation supply line shut off valve is faulty report to Washoe County within 1 week. Report any other	Once per year	Oct-Nov

Exhibit A: Standards

	decencies to Washoe County within 1 week.		
Inspect, repair, or replace drip system	Inspect operation of tubing and emitters and *replace as needed. Inspect placement of distribution tubing, check and clean filter and pressure regulator. Flush end lines. Expand emitters out to drip line of tree as needed, and plug holes from emitters that are no longer needed. *Check, replace and repair lines & fittings.*See REPAIRS section for maximum cost of repairs.	Inspect, adjust and repair at start-up. Weekly during System inspections and Annually	Spring-Fall
Inspect, repair, or replace heads and lateral lines	Inspect for broken heads and lateral line leaks/breaks. Turn off valve or system if it poses a hazard or can cause damage. Repair or replace broken heads and lateral line leaks/breaks before next watering cycle and/or report to County within 24 hours*. *See REPAIRS section for maximum cost of repairs.	Weekly during system inspections.	Spring-Fall

Irrigation Standards Cont'd			
Task	Description	Frequency	Season (approximate)
Inspect Irrigation Valves and main lines	Inspect irrigation control valves, solenoids and main lines for leaks/breaks. Turn off valve or system if it poses a hazard or can cause damage.	As needed	Fall
Drains	Check Drains at site shut down. Ensure all drains are fully open.	Once Per year	Fall
Valve Boxes	Maintain visible lids, report if broken or missing. Insure proper grade in the field and secure bolts. Keep free of debris to ensure access to all	Weekly in season; monthly off season	Yearly

Exhibit A: Standards

	valves		
Quick Couplers	Insure proper seating and placement in valve box, clean from debris	Inspect when in use	Spring-Fall
Booster Pumps	Insure proper operation. Turn pump or system if it poses a hazard or can cause damage and report to County within 24 hours.	Weekly during system inspections	Spring-Fall

Paved Surfaces Standard			
Paved pathways, and other paved areas will have smooth surfaces, be properly marked or signed.			
Task	Description	Frequency	Season (approximate)
Clean walks	Keep free of hazards and debris by sweeping, and spot pressure washing if necessary	Inspect Weekly and	Year Round
Litter Removal	All papers, metal, plastic, glass, etc. removed from paved surfaces. Empty trashcans	1/week	Year Round
Clean exterior Stairs	Keep free of hazards and debris by sweeping, and spot pressure washing if necessary	Inspect Weekly and	Year Round
Clean street gutters	Keep free of hazards and debris by sweeping, washing or blowing	Inspect Monthly and Clean as Necessary	Spring-Fall
Fallen Tree and Limb Removal	Remove fallen trees and limbs from turf.	As needed	Year round
Weed Control	Remove all invasive vegetation with Control pests using Integrated Pest Management methods whenever possible. Use of chemical, mechanical, cultural or biological when appropriate. Chemical applications used according to legal	As Needed	Seasonal

Exhibit A: Standards

	requirements as defined on label.		
Leaf Removal	Remove leaves from paved surfaces.	As Needed	Seasonal

Parking Lot Standard			
Paved parking lots will have smooth surfaces and be free of hazards and debris.			
Task	Description	Frequency	Season (approximate)
Parking Lot	Keep free of hazards, debris, and litter by sweeping, washing or blowing. If vehicles are present the use of a blower is prohibited.	Inspect Weekly and clean as necessary	Year Round
Trimming/pruning	Shrubs, bushes, and trees shall be trimmed away from vehicle parking spots. Prune according to ISA standards. Prune from a maximum of 8' ladder	As needed	Year Round

Unpaved Surfaces Standard			
Unpaved surfaces will be clean, graded and compacted for its intended use.			
Task	Description	Frequency	Season (approximate)
Grade	Maintain smooth surfaces as necessary by mechanical means. Unpaved surfaces shall not show signs of erosion.	Inspect twice annually or as needed	Spring and Fall
Rake	Hand raking for small obstructions and debris	Monthly or as needed	Fall
Weed Removal	Remove by Chemical (pre-and post emergence physical or mechanical means. Maintain 3' set back or as site requires. Control pests using Integrated Pest Management methods	2/year	Spring and Fall

Exhibit A: Standards

	whenever possible.		
Fallen Tree and Limb Removal	Remove fallen trees and limbs.	As needed	Year round
Litter Removal	All papers, metal, plastic, glass, etc. removed from unpaved surfaces Empty trashcans	1/week	Year Round
Leaf Removal	Rake or vacuum as needed	2/week	Fall

Amenities and Special Features Standard

Task (Maintenance, Inspections, Repairs, Replace, ect.)	Description	Frequency	Season (Approximate)
Trash Receptacles (Outside of building)	Trash removed, new trash bag installed and secured. Keep trash cans free from build up of dirt and debris wash if needed.	Weekly	Year round
Strom Drains	Clean Screens and keep free of leaves and debris.	As Necessary based on weather and storm conditions	Spring-Fall
Utility Boxes	Cleared for servicing	Monthly	Spring-Fall

ATTACHMENT B – COST PROPOSAL

BID ITEM #1: LANDSCAPING MAINTENANCE FEE – PROVIDE MONTHLY LANDSCAPE MAINTENANCE FEE NEXT TO THE CORRESPONDING LOCATION IN THE TABLE BELOW. WRITE/TYPE “NO BID” NEXT TO THE CORRESPONDING LOCATION FOR ANY LOCATION YOU DO NOT WISH TO INCLUDE ON THIS BID.

Facility Name	Address	Landscape maintenance fee per month, excluding repair costs	Attachment
Care Camps & Safe Camp*	1800 Threlkel Street, Reno	\$2,697.09	G1
Child Advocacy Center & Kids Kottage*	2075 Longley Ln., Reno	\$1,852.59	G2
Court Complex Parking Lots	221 South Virginia St, Reno	\$376.30	G3
District Courthouse (historic courthouse)	75 Court Street, Reno	\$511.08	G4
Emergency Operations Center (EOC) & Regional Public Safety Training Center (RPSTC) *	5195 & 5190 Spectrum Blvd., Reno	\$2,015.28	G5
Family Engagement Center*	905 E. Prater, Sparks	\$463.98	GF6
Hope House*	3035 Acacia Way, Reno	\$258.53	G7
Incline Library & Incline Service Center	845 & 855 Alder Ave., Incline	\$1,204.77	G8
Incline Sheriff's Substation & Incline Washoe County Roads Yard	625A & 625B Mt. Rose Hwy., Incline	\$730.76	G9
Jan Evans Juvenile Detention Center	650 Ferrari-McLeod Blvd., Reno	\$2,969.78	G10
Jane Aubrey House*	3908 Belmore Way, Reno	\$375.79	G11
Liberty Center	350 S. Center, Reno	\$205.09	G12
Longley Complex	3031 Longley Lane, Reno	\$537.73	G13
Medical Examiner's Office*	990 E Ninth St	\$1,033.91	G14
Mills B. Lane Justice Center (north tower) & New Courthouse (south tower)	1 S. Sierra St., Reno	\$255.20	G15
Northwest Library	2325 Robb Dr., Reno	\$862.34	G16
Our Place Campus*	605 South 21 st Street & 480 Galetti Way, Sparks	\$4,461.53	G17
Pagels	2395 E. Prater Way, Sparks	\$525.65	G18
Parks Administration Office	2601 Plumas St., Reno	\$553.08	G19
Regional Animal Services	2825 Longley Lane, Reno	\$1,586.36	G20
Reno Library	301 S. Center, Reno	\$184.17	G21
Sheriff's Office*	911 Parr Blvd., Reno	\$1,847.88	G22
South Valleys Library	15650A Wedge Pkwy, Reno	\$729.99	G23
Spanish Springs Library	7100 A Pyramid Way, Sparks	\$1,467.27	G24
Sparks Library	1125 12th St., Sparks	\$647.23	G25
TB Clinic	10 Kirman Ave., Reno	\$275.74	G26
Tech Services & Public Administration	224 & 230 Edison Way, Reno	\$607.72	G27
Washoe County Complex & Senior Center	1001 & 1155 E 9th St., Reno	\$3,477.65	G28

ATTACHMENT C

INSURANCE, INDEMNIFICATION AND HOLD HARMLESS REQUIREMENTS FOR SERVICE PROVIDERS LANDSCAPE MAINTENANCE SERVICES

INTRODUCTION

Washoe County has established specific insurance and indemnification requirements for service providers contracting with the County. Indemnification and hold harmless clauses and insurance requirements are intended to assure that a service provider accepts and is able to pay for a loss or liability related to its activities.

ATTENTION IS DIRECTED TO THE INSURANCE REQUIREMENTS BELOW. IT IS HIGHLY RECOMMENDED THAT PROVIDERS CONFER WITH THEIR RESPECTIVE INSURANCE CARRIERS OR BROKERS TO DETERMINE THE AVAILABILITY OF INSURANCE CERTIFICATES AND ENDORSEMENTS AS PRESCRIBED AND PROVIDED HEREIN. IF THERE ARE ANY QUESTIONS REGARDING THESE INSURANCE REQUIREMENTS, IT IS RECOMMENDED THAT THE AGENT/BROKER CONTACT THE COUNTY RISK MANAGEMENT DEPARTMENT DIRECTLY AT (775) 328-2665.

INDEMNIFICATION AGREEMENT

PROVIDER agrees to hold harmless, indemnify, and defend COUNTY, its officers, agents, employees, and volunteers from any loss or liability, financial or otherwise resulting from any claim, demand, suit, action, or cause of action based on bodily injury including death or property damage, including damage to PROVIDER'S property, caused by the omission, failure to act, or negligence on the part of PROVIDER, its employees, agents, representatives, or Subcontractors arising out of the performance of work under this Agreement by PROVIDER, or by others under the direction or supervision of PROVIDER.

In the event of a lawsuit against the COUNTY arising out of the activities of PROVIDER, should PROVIDER be unable to defend COUNTY due to the nature of the allegations involved, PROVIDER shall reimburse COUNTY, its officers, agents, and employees for cost of COUNTY personnel in defending such actions at its conclusion should it be determined that the basis for the action was in fact the negligent acts, errors or omissions of PROVIDER.

GENERAL REQUIREMENTS

PROVIDER shall purchase Industrial Insurance, General Liability, and Automobile Liability as described below. The cost of such insurance shall be borne by PROVIDER. PROVIDER may be required to purchase Professional Liability coverage based upon the nature of the service agreement.

INDUSTRIAL INSURANCE (Workers' Compensation)

It is understood and agreed that there shall be no Industrial Insurance coverage provided for PROVIDER or any Sub-consultant by COUNTY. PROVIDER agrees, as a precondition to the performance of any work under this Agreement and as a precondition to any obligation of the COUNTY to make any payment under this Agreement to provide COUNTY with a certificate issued by an insurer showing coverage in accordance with NRS 616B.627 and NRS 617.210 for PROVIDER and any sub-contractors used pursuant to this Agreement.

If PROVIDER is a sole proprietor, coverage for the sole proprietor must be purchased and evidence of coverage must appear on the Certificate of Insurance. Such requirement may be waived for a sole proprietor who does not use the services of any employees, subcontractors, or independent contractors and completes an Affirmation of Compliance pursuant to NRS 616B.627.

Should PROVIDER be self-funded for Industrial Insurance, PROVIDER shall so notify COUNTY in writing prior to the signing of this Agreement. COUNTY reserves the right to approve said retentions and may request additional documentation financial or otherwise for review prior to the signing of this Agreement.

It is further understood and agreed by and between COUNTY and PROVIDER that PROVIDER shall procure, pay for, and maintain the above-mentioned industrial insurance coverage at PROVIDER'S sole cost and expense.

MINIMUM LIMITS OF INSURANCE

PROVIDER shall maintain limits no less than:

1. General Liability: \$1,000,000 combined single limit per claim for bodily injury, personal injury, and property damage. If Commercial General Liability Insurance or other form with a general aggregate limit is used, the general aggregate limit shall be increased to equal twice the required occurrence limit or revised to apply separately to each project or location.
2. Automobile Liability: \$1,000,000 combined single limit per accident for bodily injury and property damage. No aggregate limits may apply.

DEDUCTIBLES AND SELF-INSURED RETENTIONS

Any deductibles or self-insured retentions must be declared to and approved by the COUNTY Risk Management Division. COUNTY reserves the right to request additional documentation, financial or otherwise, prior to giving its approval of the deductibles and self-insured retention and prior to executing the underlying agreement. Any changes to the deductibles or self-insured retentions made during the term of this Agreement or during the term of any policy, must be approved by the COUNTY Risk Manager prior to the change taking effect.

OTHER INSURANCE PROVISIONS

The policies are to contain, or be endorsed to contain, the following provisions:

1. COUNTY, its officers, employees and volunteers are to be covered as insureds as respects: liability arising out of activities performed by or on behalf of PROVIDER, including COUNTY'S general supervision of PROVIDER; products and completed operations of PROVIDER; premises owned, occupied or used by PROVIDER; or automobiles owned, leased, hired, or borrowed by PROVIDER. The coverage shall contain no special limitations on the scope of protection afforded to COUNTY, its officers, employees or volunteers.
2. PROVIDER'S insurance coverage shall be primary insurance as respects COUNTY, its officers, employees and volunteers. Any insurance or self-insurance maintained by COUNTY, its officers, employees or volunteers shall be excess of PROVIDER'S insurance and shall not contribute with it in any way.
3. Any failure to comply with reporting provisions of the policies shall not affect coverage provided to COUNTY, its officers, employees or volunteers.
4. PROVIDER'S insurance shall apply separately to each insured against whom claim is made or suit is brought, except with respect to the limits of the insurer's liability.
5. Each insurance policy required by this clause shall be endorsed to state that coverage shall not be suspended, voided, canceled or non-renewed by either party, reduced in coverage or in limits except after thirty (30) days' prior written notice by certified mail, return receipt requested, has been given to COUNTY except for nonpayment of premium.

ACCEPTABILITY OF INSURERS

Insurance is to be placed with insurers with a Best's rating of no less than A-: VII. COUNTY, with the approval of the Risk Manager, may accept coverage with carriers having lower Best's Ratings upon review of financial information concerning PROVIDER and insurance carrier. COUNTY reserves the right to require that PROVIDER'S insurer be a licensed and admitted insurer in the State of Nevada, or on the Insurance Commissioner's approved but not admitted list.

VERIFICATION OF COVERAGE

PROVIDER shall furnish COUNTY with certificates of insurance and with original endorsements affecting coverage required by this exhibit. The certificates and endorsements for each insurance policy are to be signed by a person authorized by that insurer to bind coverage on its behalf. **All certificates and endorsements are to be addressed to the specific COUNTY contracting department and be received and approved by the COUNTY before work commences.** COUNTY reserves the right to require complete, certified copies of all required insurance policies, at any time.

SUBCONTRACTORS

PROVIDER shall include all Subcontractors as insureds under its policies or shall furnish separate certificates and endorsements for each Subcontractor. All coverages for Subcontractors shall be subject to all of the requirements stated herein.

MISCELLANEOUS CONDITIONS

1. PROVIDER shall be responsible for and remedy all damage or loss to any property, including property of COUNTY, caused in whole or in part by PROVIDER, any Subcontractor, or anyone employed, directed or supervised by PROVIDER.
2. Nothing herein contained shall be construed as limiting in any way the extent to which the PROVIDER may be held responsible for payment of damages to persons or property resulting from its operations or the operations of any Subcontractor under it.
3. In addition to any other remedies COUNTY may have if PROVIDER fails to provide or maintain any insurance policies or policy endorsements to the extent and within the time herein required, COUNTY may, at its sole option:
 - a. Order PROVIDER to stop work under this Agreement and/or withhold any payments which become due PROVIDER hereunder until PROVIDER demonstrates compliance with the requirements hereof; or
 - b. Terminate the Agreement.

ATTACHMENT C - CERTIFICATION REGARDING DEBARMENT, SUSPENSION, AND OTHER RESPONSIBILITY MATTERS

The prospective Proposer, BrightView Landscape Services, Inc. certifies to the best of its knowledge and belief that it and its principals:

- (a) Are not presently debarred, suspended, proposed for debarment, declared ineligible, or voluntarily excluded from covered transactions by any Federal department or agency;
- (b) Have not within a three year period preceding this proposal been convicted of or had a civil judgment rendered against them for commission of fraud or a criminal offense in connection with obtaining, attempting to obtain, or performing a public (Federal, State, or local) transaction or contract under a public transaction; violation of Federal or State antitrust statutes or commission of embezzlement, theft, forgery, bribery, falsification or destruction of records, making false statements, or receiving stolen property;
- (c) Are not presently indicted for or otherwise criminally or civilly charged by a government entity (Federal, State, or local) with commission of any of the offenses enumerated in paragraph (1) (b) of this certification; and
- (d) Have not within a three-year period preceding this application/proposal had one or more public transactions (Federal, State, or local) terminated for cause or default.

I understand that a false statement on this certification may be grounds for rejection of this proposal or termination of the award. In addition, under 18 USC Sec. 1001, a false statement may result in a fine of up to \$10,000 or imprisonment for up to 5 years, or both.

Karine Stuimer, Senior Vice President

Typed Name & Title of Authorized Representative



July 20, 2023

Signature of Authorized Representative

Date

I am unable to certify to the above statement. My explanation is attached.

Signature _____ Date _____

Site Locations

Facility Name	Address	Hours of Operation
Cares Campus + Safe Camp	1800 Threlkel St Reno	24/7
Child Advocacy Center & Kids Kottage	2075 Longley Ln., Reno	24/7
Courts Complex Parking Lot	221, 201, 255, 248, 275,301 South Virginia St, 76 Court St., Reno	Mon - Sun 6:30am - 12am
District Courthouse (historic courthouse)	75 Court Street, Reno	Mon - Sun 7am - 12am
Emergency Operations Center (EOC) and Regional Public Safety Training Center (RPSTC)	5190 & 5195 Spectrum Blvd, Reno	24/7
Family Engagement Center	905 E. Prater, Sparks	Mon – Fri 8am-7pm, Sat 8am-5pm
Hope House	3035 Acacia Way, Reno	Residential
Incline Library & Incline Service Center	845 & 855 Alder Ave., Incline	Mon 10am-6pm, Tues 10am-7pm Wed - Fri 10am-6pm Monday – Friday 10:00 am – 6:00 pm
Incline Sheriff's Substation & Incline Washoe County Roads Yard	625A & 625B.Mt. Rose Hwy., Incline	Monday – Thursday 8:00 am – 5:00 pm Monday – Thursday 6:00 am – 4:30 pm
Jan Evans Juvenile Detention Center	650 Ferrari-McLeod Blvd., Reno	24/7
Jane Aubrey House	3908 Belmore Way, Reno	Residential
Liberty Center	350 S. Center, Reno	Mon - Sun 8am - 5:15 pm
Longley Complex	3031 Longley Lane, Reno	Monday - Friday 8am - 5pm
Medical Examiner's Office	990 E Ninth St, Reno	24/7
Mills B. Lane Justice Center (north tower) & New Courthouse (south tower)	1 S. Sierra St., Reno	Monday - Friday 7am - 5pm
Northwest Library	2325 Robb Dr., Reno	Mon-Tue 10am - 6pm, Wed-10am-6pm, Thurs – Fri 10am-6pm, Sat - Sun 10am - 4pm
Our Place Campus	605 South 21 Street & 480 Galetti Way, Sparks	24 Hour
Pagels	2395 E. Prater Way, Sparks	Various on an as needed basis
Parks Administration Office	2601 Plumas St., Reno	Monday - Friday 7:30am - 6pm
Regional Animal Services	2825 Longley Lane, Reno	Mon - Sun 8am - 10pm
Reno Library	301 S. Center, Reno	Mon – Fri 10am-6pm, Sat + Sun 10am-2pm
Sheriff's Office	911 Parr Blvd., Reno	24/7
South Valleys Library	15650A Wedge Pkwy, Reno	Mon - Tues 10am-6pm, Wed 10am-7pm, Thurs - Fri 10am-6pm, Sat - Sun 10am-5pm
Spanish Springs Library	7100 A Pyramid Way, Sparks	Mon 10am-6pm, Tues 10am-7pm, Wed - Fri 10am-6pm, Sun 10am-5pm
Sparks Library	1125 12th St., Sparks	Mon - Wed 10am-6pm, Thur 10am-7pm, Fri 10am-6pm, Sat - Sun 10am-4pm

TB Clinic	10 Kirman Ave., Reno	Mon-Fri 8am-5pm (Investigator present 24/7)
Tech Services & Public Administration	224 & 230 Edison Way, Reno	Mon - Fri 7:30am-5pm
Washoe County Complex & Senior Center	1001 & 1155 E Ninth St., Reno	Mon - Fri 7:30am-5pm
END OF SITES		



2021 Orthophoto

Washoe County
GIS



CARES Campus / Safe Camp

1800 Threlkel St.



0 25 50 100 Feet



Path: G:\arcdata\projects\csd_property\landscape\CARES.mxd

Landscape ITB 2023

 CONTRACTED AREA



CAC - Charles McGee Center

2097 Longley Ln,



0 20 40 80 Feet

Path: G:\arcdata\projects\csd_property\landscape\CAC.mxd

 CONTRACTED AREA



Include
Trees

2021 Orthophoto

Washoe County
GIS



Washoe County Court Complex Parking Lot - 221 S Virginia St



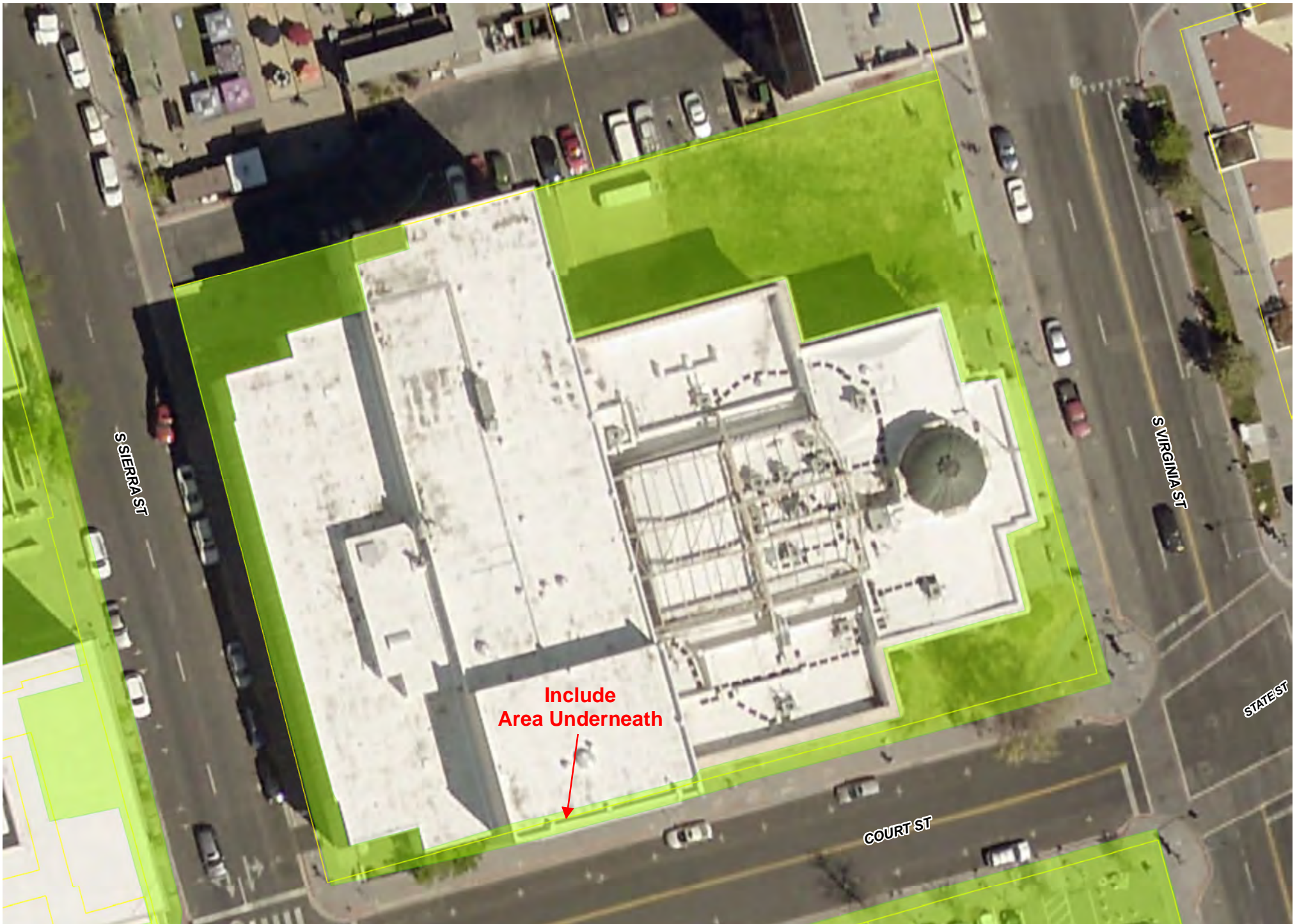
0 20 40 80 Feet



Landscape ITB 2023

 CONTRACTED AREA

Path: G:\arcdata\projects\csd_property\landscape\Court_Complex_Parking_Lot.mxd





2021 Orthophoto

Washoe County
GIS

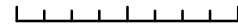


REOC & Public Safety Training Center

5195 Spectrum Blvd.



0 70 140 280 Feet



Path: G:\arcdata\projects\csd_property\landscape\REOC.mxd

Landscape ITB 2023

 CONTRACTED AREA



2021 Orthophoto

Washoe County
GIS



Family Engagement Center

905 E. Prater Way



0 10 20 40 Feet

Path: G:\arcdata\projects\csd_property\landscape\Family_Engagement_Center.mxd

Landscape ITB 2023

 **CONTRACTED AREA**



2021 Orthophoto

Washoe County
GIS



Hope House
3035 Accacia Way



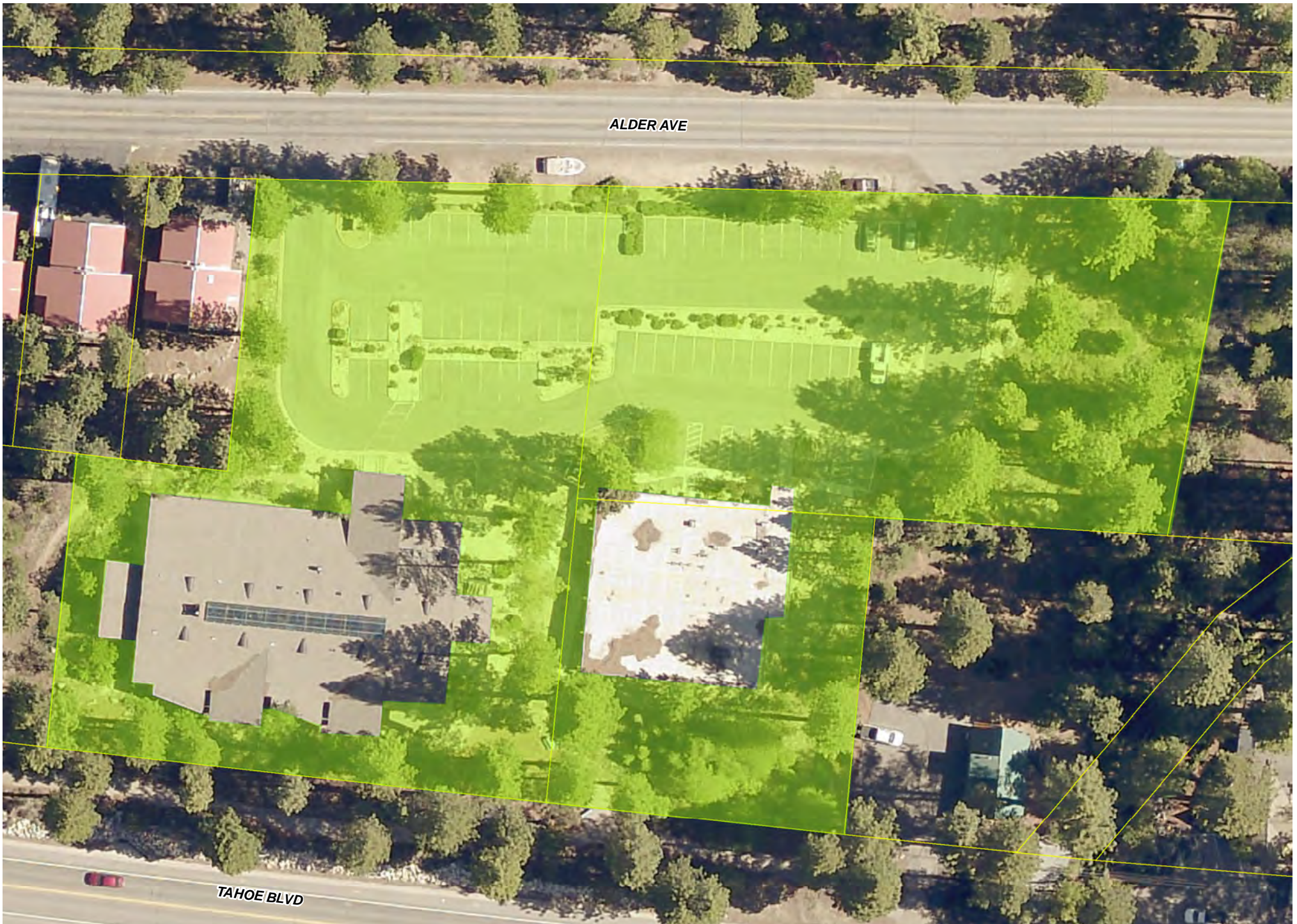
0 5 10 20 Feet



Path: G:\arcdata\projects\csd_property\landscape\Hope_House.mxd

Landscape ITB 2023

 CONTRACTED AREA



ALDER AVE

TAHOE BLVD

2021 Orthophoto

Washoe County
GIS



**Incline Village Library - 845 Alder Ave.
Service Center - 855 Alder Ave.**



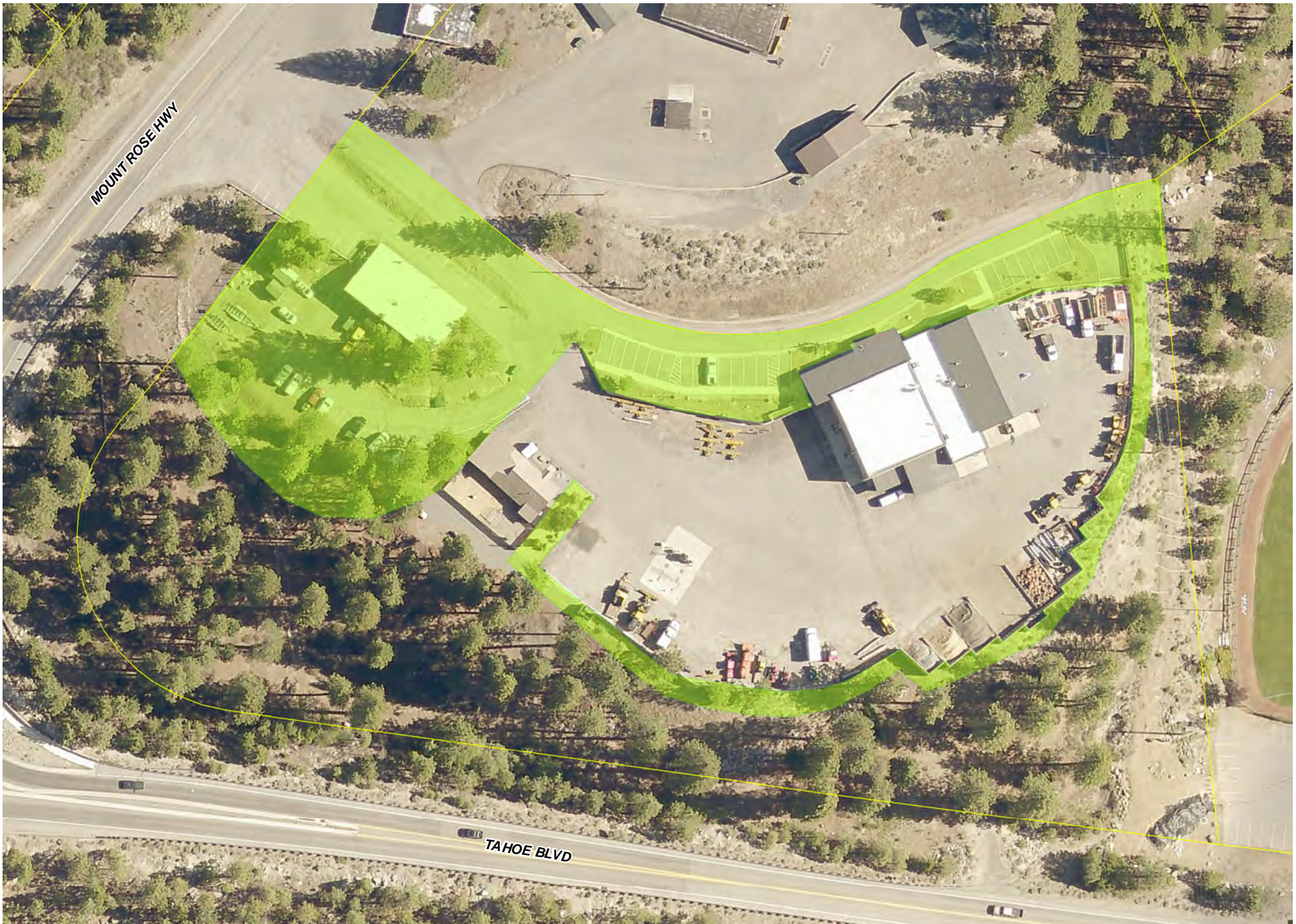
0 12.5 25 50 Feet



Path: G:\arcdata\projects\csd_property\landscape\Incline_Village_Library_Service_Center.mxd

Landscape ITB 2023

 **CONTRACTED AREA**



MOUNT ROSE HWY

TAHOE BLVD

2021 Orthophoto

Washoe County
GIS

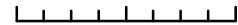


Landscape ITB 2023

Incline Roads - 625B Mount Rose Hwy
Incline Sheriff Substation - 625 Mount Rose Hwy



0 25 50 100 Feet



Path: G:\arcdata\projects\csd_property\landscape\Incline_Roads.mxd

Landscape ITB 2023

 CONTRACTED AREA



2021 Orthophoto

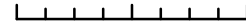
Washoe County
GIS



Jan Evans
650 Ferrari McLeod Blvd.



0 35 70 140 Feet



Path: G:\arcdata\projects\csd_property\landscape\Jan_Evans.mxd

Landscape ITB 2023

 CONTRACTED AREA



BELMORE WAY

CHRISTOPHER CIR

2021 Orthophoto

Washoe County
GIS



Jane Aubrey House
3908 Belmore Way



0 5 10 20 Feet



Path: G:\arcdata\projects\csd_property\landscape\Jane_Aubrey_House.mxd

Landscape ITB 2023

 CONTRACTED AREA



2021 Orthophoto

Washoe County
GIS



Liberty Center 350 South Center St.



0 5 10 20 Feet



Path: G:\arcdata\projects\csd_property\landscape\Liberty_Center.mxd

Landscape ITB 2023

 CONTRACTED AREA



2021 Orthophoto

Washoe County
GIS



Washoe County Longley Complex

3031 Longley Ln.

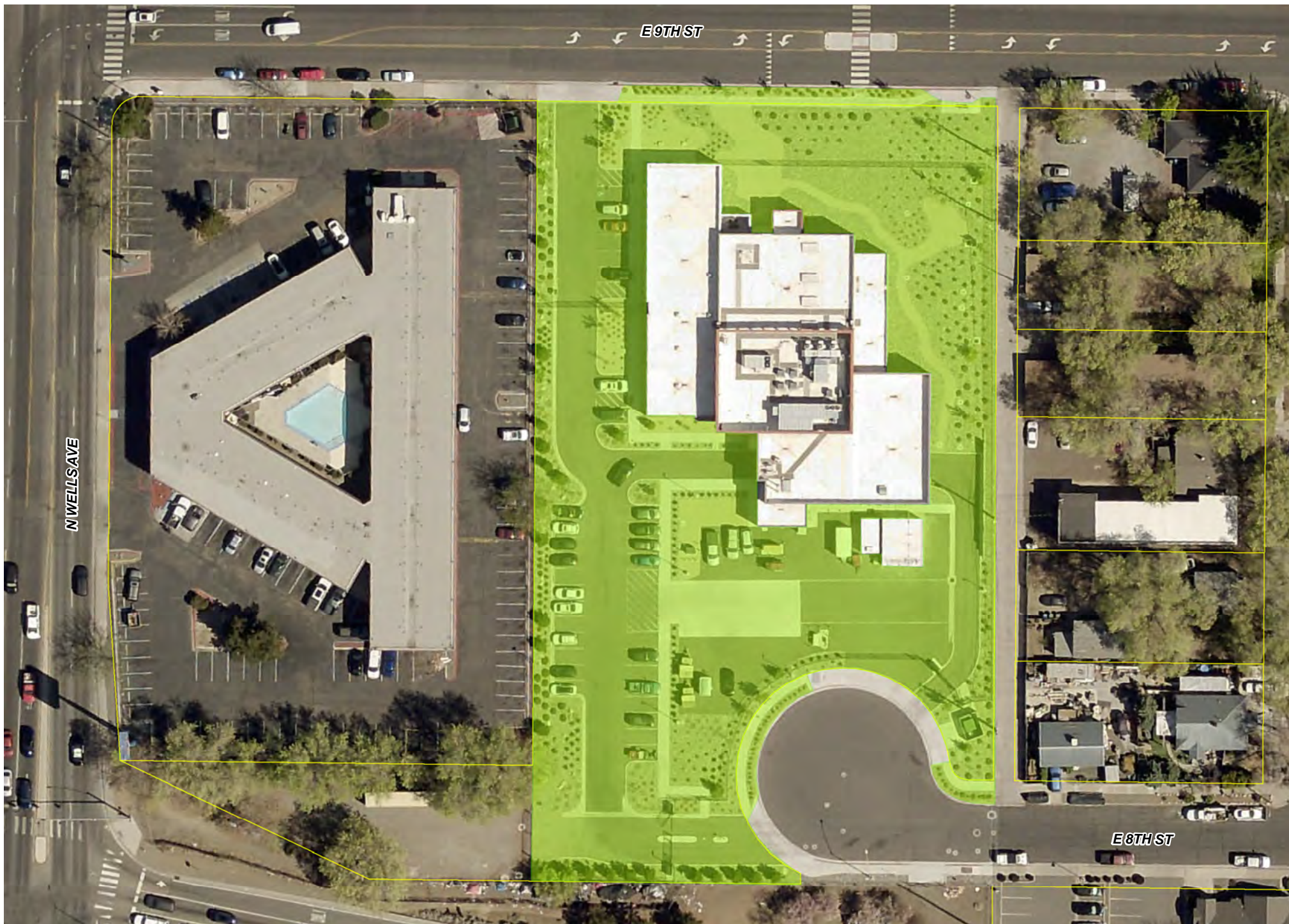


0 37.5 75 150 Feet

Path: G:\arcdata\projects\csd_property\landscape\WACO Longley Administration.mxd

Landscape ITB 2023

 CONTRACTED AREA



2021 Orthophoto

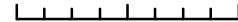
Washoe County
GIS



Medical Examiners 990 E. 9th St.



0 20 40 80 Feet



Path: G:\arcdata\projects\csd_property\landscape\Medical_Examiners.mxd

Landscape ITB 2023

 CONTRACTED AREA



2021 Orthophoto

Washoe County
GIS



Mills B Lane

One South Sierra St



0 15 30 60 Feet



Path: G:\arcdata\projects\csd_property\landscape\Mills_B_Lane.mxd

Landscape ITB 2023

 CONTRACTED AREA



2021 Orthophoto

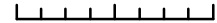
Washoe County
GIS



Northwest Library
2325 Robb Drive



0 15 30 60 Feet



Path: G:\arcdata\projects\cscd_property\landscape\Northwest_Library.mxd

Landscape ITB 2023

 CONTRACTED AREA



NORTH ST

EAST ST

S 21ST ST

GLENDALE AVE

2021 Orthophoto

Washoe County
GIS



Washoe County OUR PLACE

605 S. 21st St.



0 37.5 75 150 Feet



Path: G:\arcdata\projects\csd_property\landscape\Our_Place.mxd

Landscape ITB 2023

 CONTRACTED AREA



NORTH ST

EAST ST

S 21ST ST

GLENDALE AVE

2021 Orthophoto

Washoe County
GIS

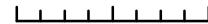


Washoe County OUR PLACE

605 S. 21st St.



0 37.5 75 150 Feet



Path: G:\arcdata\projects\csd_property\landscape\Our_Place.mxd

Landscape ITB 2023

 CONTRACTED AREA



2021 Orthophoto

Washoe County
GIS



Pagels Building

2395 E. Prater Way



0 5 10 20 Feet



Path: G:\arcdata\projects\csd_property\landscape\Pagels_Bldg.mxd

Landscape ITB 2023

 CONTRACTED AREA



2021 Orthophoto

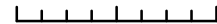
Washoe County
GIS



Washoe County Parks Administration
2601 Plumas St.



0 10 20 40 Feet



Path: G:\arcdata\projects\csd_property\landscape\WACO_Parks_Admin.mxd

Landscape ITB 2023

 CONTRACTED AREA

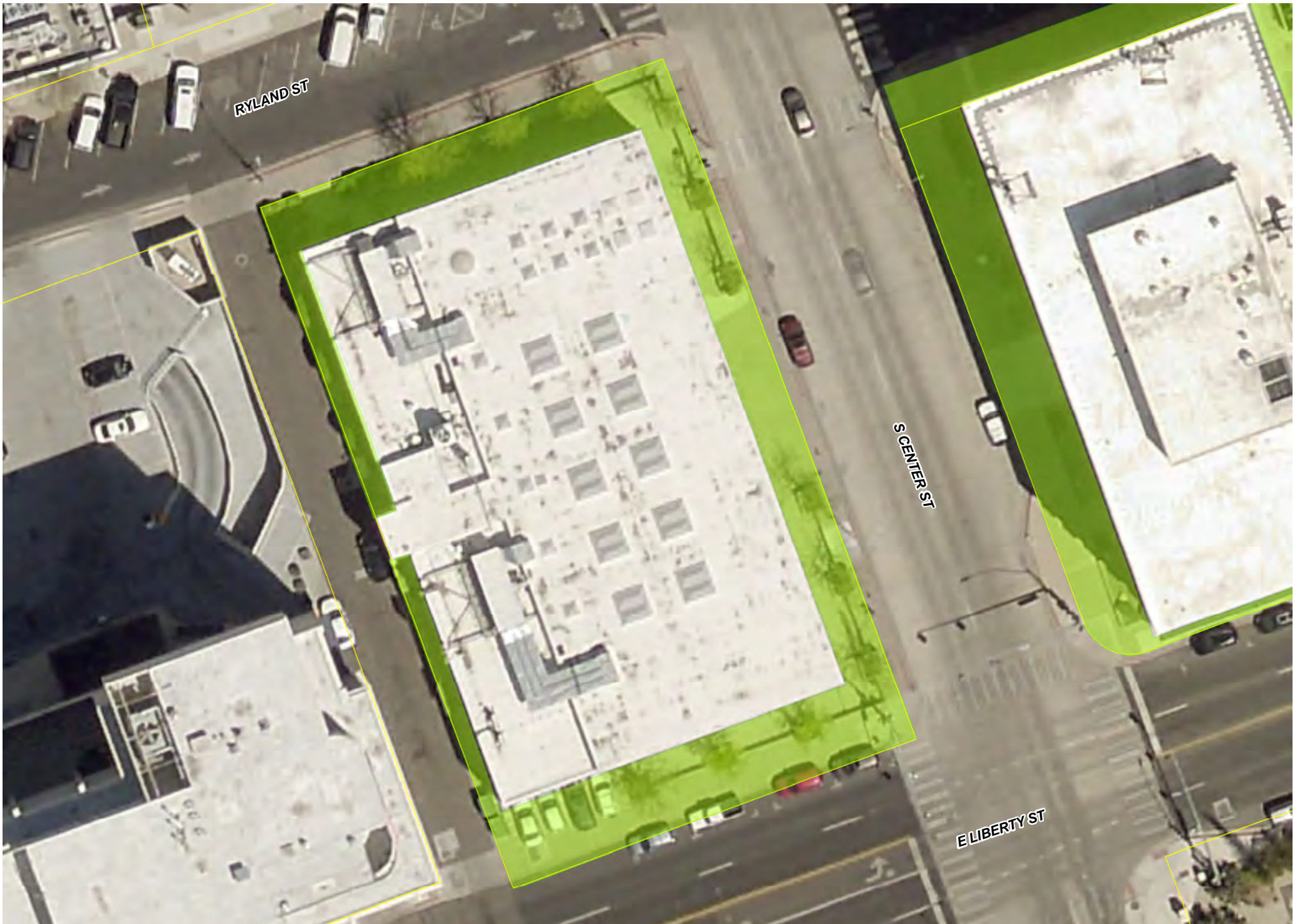


12
Interior
Planters

LONGLEY LN

MARQUEZ WAY





2021 Orthophoto

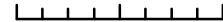
Washoe County
GIS



Reno Library
301 S. Center St.



0 10 20 40 Feet



Path: G:\arcdata\projects\csd_property\landscape\Reno_Library.mxd

Landscape ITB 2023

 CONTRACTED AREA



2021 Orthophoto

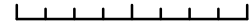
Washoe County
GIS



Washoe County Sheriff - Jail 911 Parr Blvd.



0 50 100 200 Feet



Path: G:\arcdata\projects\csd_property\landscape\WACO Jail.mxd

Landscape ITB 2023

 CONTRACTED AREA



WEDGE PKWY

WHITES CREEK LN

2021 Orthophoto

Washoe County
GIS

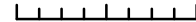


South Valleys Library

15650 A Wedge Pkwy



0 12.5 25 50 Feet



Path: G:\arcdata\projects\csd_property\landscape\South_Valley_Library.mxd

Landscape ITB 2023

 CONTRACTED AREA



2021 Orthophoto

Washoe County
GIS



Spanish Springs Library

7100 A Pyramid Way



0 30 60 120 Feet

Path: G:\arcdata\projects\csd_property\landscape\Spanish_Springs_Library.mxd

Landscape ITB 2023

 CONTRACTED AREA



2021 Orthophoto

Washoe County
GIS



Sparks Library
1125 12th St.



0 35 70 140 Feet



Path: G:\arcdata\projects\csd_property\landscape\Sparks_Library.mxd

Landscape ITB 2023

 CONTRACTED AREA

E2ND ST

KIRMAN AVE



2021 Orthophoto

Washoe County
GIS



Washoe County TB Clinic
10 Kirman Ave.

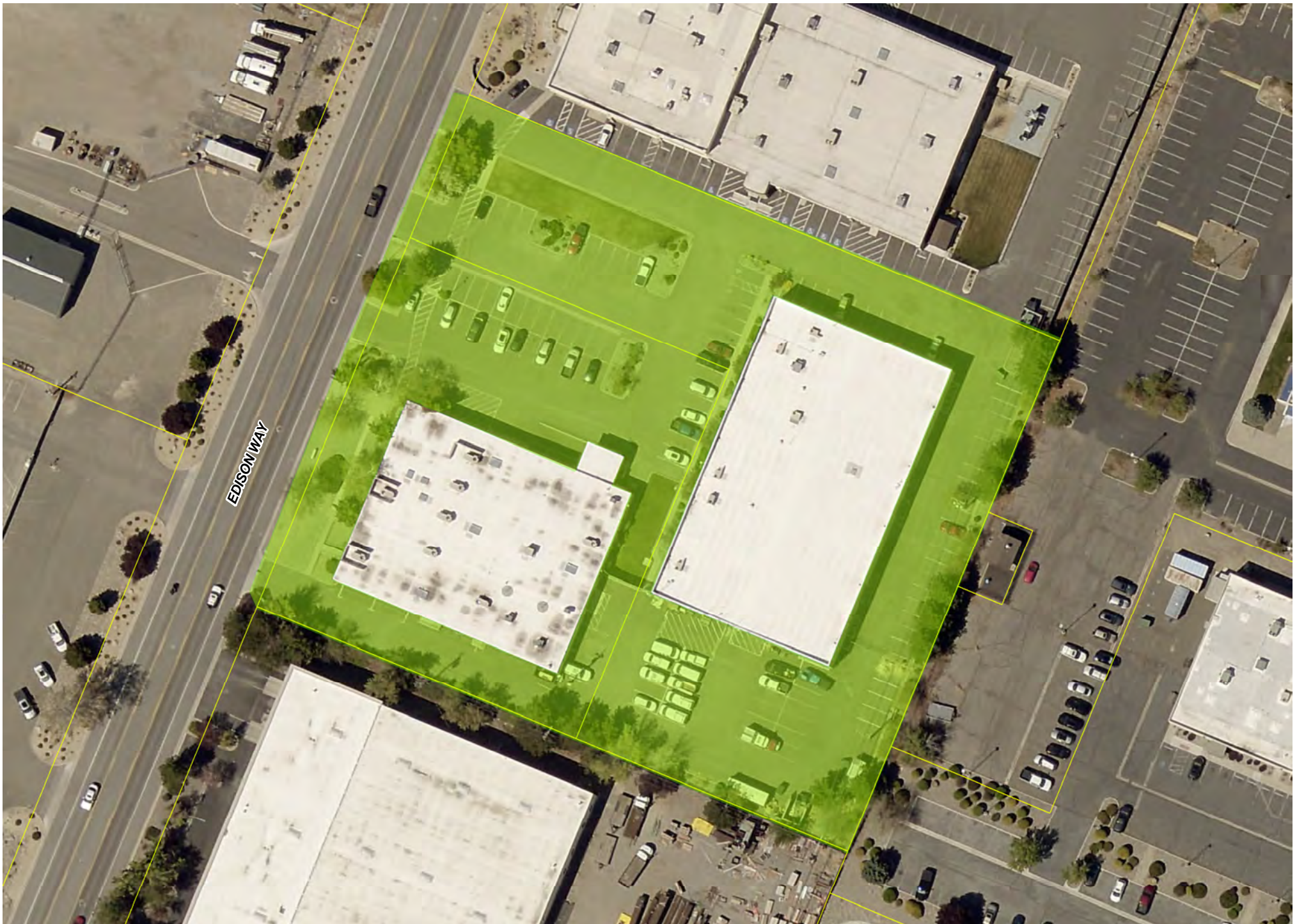


0 5 10 20 Feet

Path: G:\arcdata\projects\csd_property\landscape\TB_Clinic_Reno.mxd

Landscape ITB 2023

 CONTRACTED AREA



2021 Orthophoto

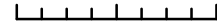
Washoe County
GIS



Public Administration - 224 Edison Way
Technology Services - 230 Edison Way



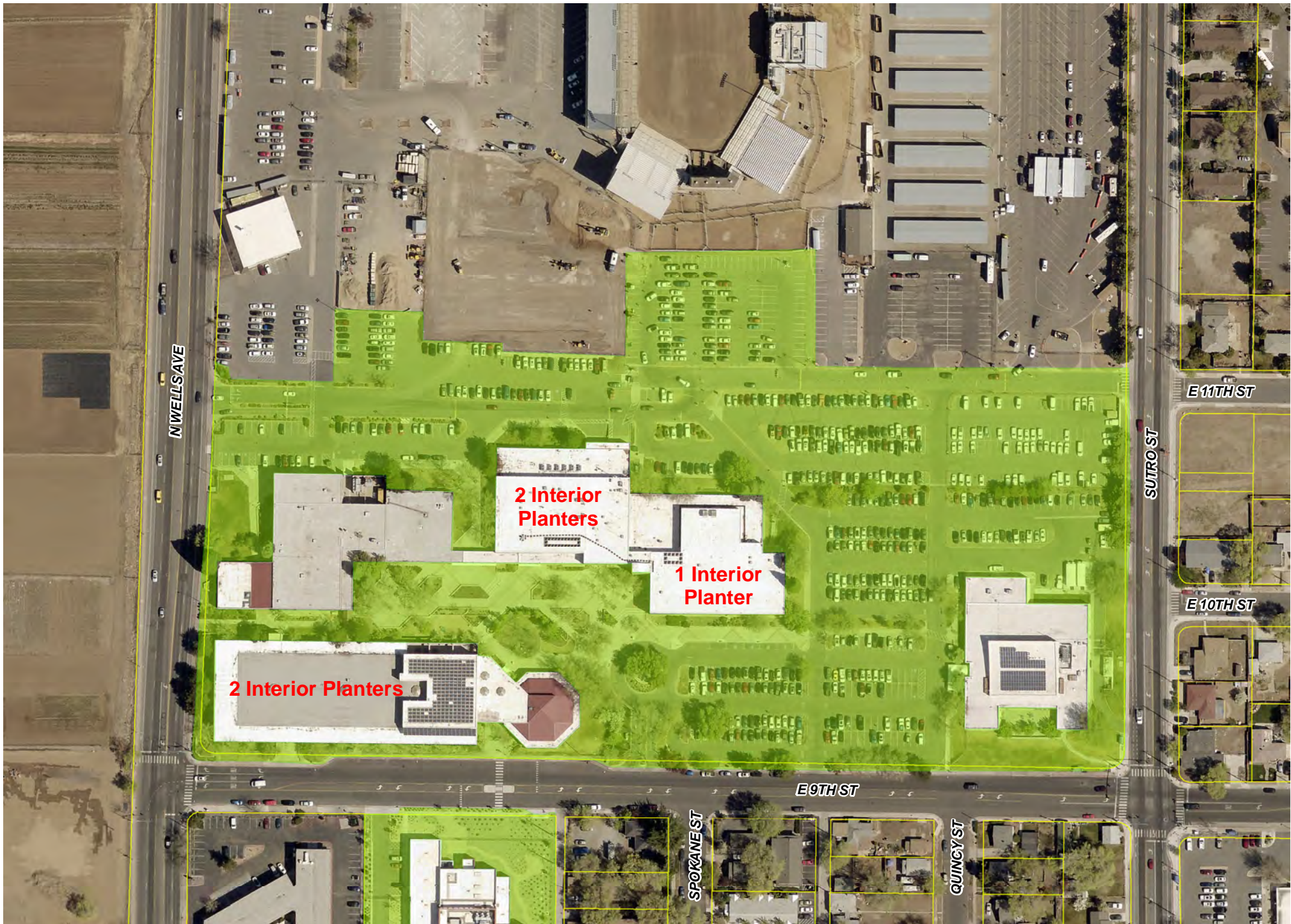
0 20 40 80 Feet



Path: G:\arcdata\projects\csd_property\landscape\Public_Admin_Tech_Services_Edison.mxd

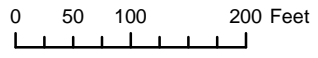
Landscape ITB 2023

 CONTRACTED AREA



Washoe County Administration Bldgs

1001 & 1155 E. Ninth St.



Path: G:\arcdata\projects\lcsd_property\landscape\9th_Street.mxd



Federal Funding Provisions in WC Procurement

Required Provision	Contract Criteria	Services	Goods	Construction
(A) Legal/Contractual/Administrative remedies for breach of contract	> \$50,000	Applicable	Applicable	Applicable
(B) Termination for cause or convenience	> \$10,000	Applicable	Applicable	Applicable
(C) Equal Employment Opportunity	Construction Certs Rqd	N/A	N/A	Applicable
(D) Davis-Bacon Act and Copeland "Anti-Kickback" Act	Construction > \$2,000	N/A	N/A	Applicable
(E) Contract Work Hours and Safety Standards Act	> \$100,000 mechanics or laborers	Deliverable Dependent	Deliverable Dependent	Applicable
(F) Rights to Inventions Made Under a Contract or Agreement	Development & Research	Applicable	N/A	N/A
(G) Clean Air Act and Federal Water Pollution Control Act	> \$150,000	Applicable	N/A	Applicable
(H) Debarment & Suspension (include SAM.gov screenshot)	All	Applicable	Applicable	Applicable
(I) Byrd Anti-Lobbying Amendment	>\$100,000 certification required	Applicable	N/A	Applicable
(J) Procurement of Recovered Materials (to extent practicable)	> \$10,000 where practicable; see 40 CFR Part 247, Subpart B	Material Dependent	Material Dependent	Material Dependent

(K) Prohibition on certain telecommunications and video surveillance services & equipment	All	Applicable	Applicable	Applicable
(L) Domestic Preferences for procurements (to extent practicable)	All	Applicable	Applicable	Applicable
(M) Fraud & False or Fraudulent Statements	All	Applicable	Applicable	Applicable
(N) Access & Retention of Records	All	Applicable	Applicable	Applicable
(O) Compliance with Federal Law, etc.	All	Applicable	Applicable	Applicable
(P) Women and Minority Owned Solicitation	All	Solicitation using ndot@dbesystem.com	Solicitation using ndot@dbesystem.com	Solicitation using ndot@dbesystem.com
(Q) Build America, Buy America	Construction Cert Required	N/A	N/A	Applicable
(R) Contract Changes or Modification	All	Applicable	Applicable	Applicable
(S) No Federal Obligation	All	Applicable	Applicable	Applicable