

Washoe County Board of County Commissioners



Development Agreement (Montreux 2000 TM0007-002)

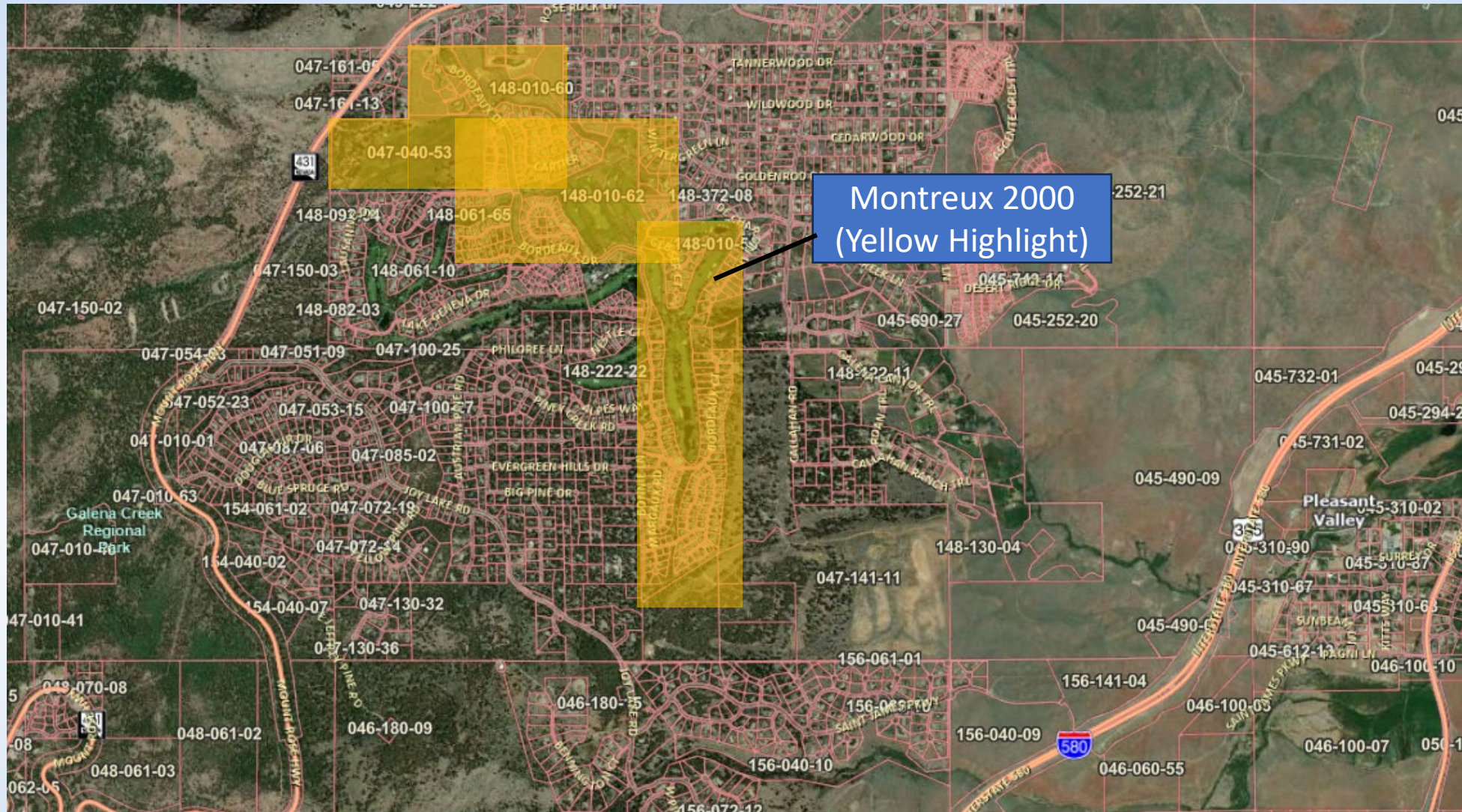
November 18, 2025

Request



A development agreement for the Montreux 2000 subdivision to extend the deadline to record the next final map by one year, until July 24, 2026.

Vicinity Map

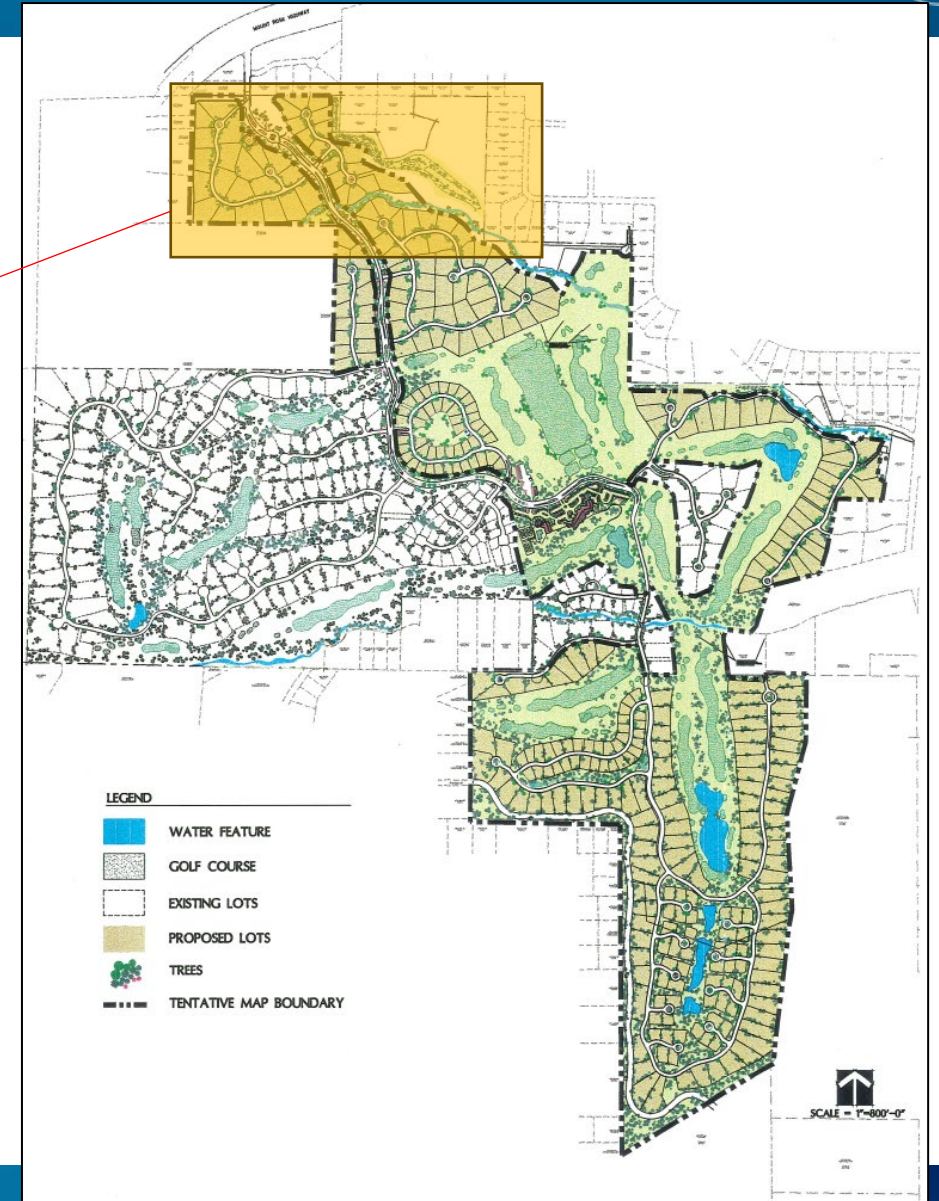


Background



- Montreux 2000 was originally approved on September 20, 2000.
- To date 301 residential lots have been recorded and only 34 residential lots remain to be recorded.
- The tentative map has had numerous final maps recorded, extensions, and a development agreement.

Montreux 2000 - Site Plan (Remaining Units and Full Buildout)



Findings & Recommended Motion



- Staff is able to make all four (4) findings as detailed on pages 4 and 5 of the staff report and recommends approval of the development agreement amendment.
- The motion can be found on page 5 of the staff report.

Thank you

Tim Evans, Planner
Washoe County CSD – Planning Division
tevens@washoecounty.gov
775-328-2314

