



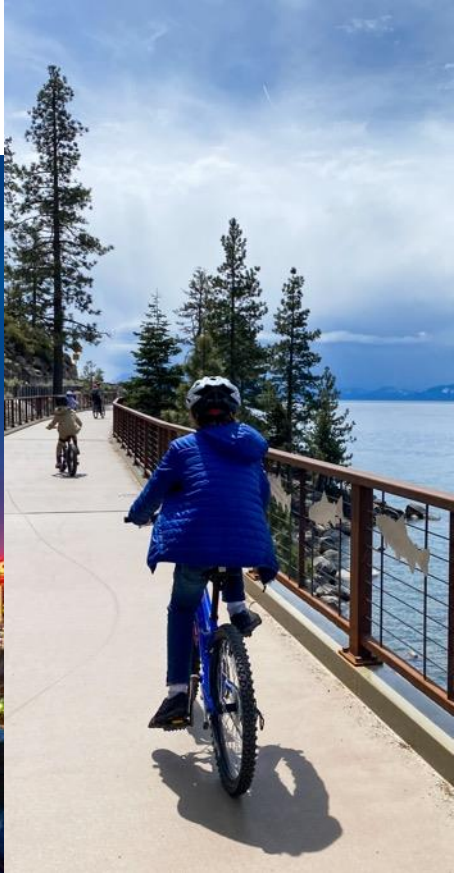
Climate Action Plan

County Operations & Community Wide

Brian Beffort, Sustainability Manager

March 11, 2025

Washoe County: A Beautiful Place to Live



But We are Threatened...



Weather-Related Challenges

- **Wildfires**
- **Atmospheric Rivers**
- **Floods**
- **Extreme Heat**
- **Air quality**
- **Drought**
- **Electricity Blackouts**
- **High Energy Bills**

On the front lines...





Washoe County has committed to Net Zero by 2050.

Strategic Priority

Support a thriving community;
Achieve Net Zero greenhouse
gas emissions by 2050

The County's Mission

Working together regionally to
provide and sustain a safe,
secure, and healthy community.

Nevada State GHG Reduction

SB 254 (2019)

NRS 445B.380

- 28% by 2025
- 45% by 2030
- Zero or near-zero by 2050

(below 2005 levels)

Master Plan

(adopted 2024)



Green Recovery Plan

(adopted 2023)



Washoe County Climate Action Plan



County Operations



Community-Wide

County & Community-Informed Plan

100 +

Depts & Community & Gov & Org conversations

1,200 +

Community members contributed to plan

7

Public listening sessions, including Spanish language



126 Actions Across 4 Strategies for Net Zero

1

Net Zero 2050
alignment



2

Sustainable
land use



3

Reduce Emissions
at the Source



4

Produce Cleaner
Energy

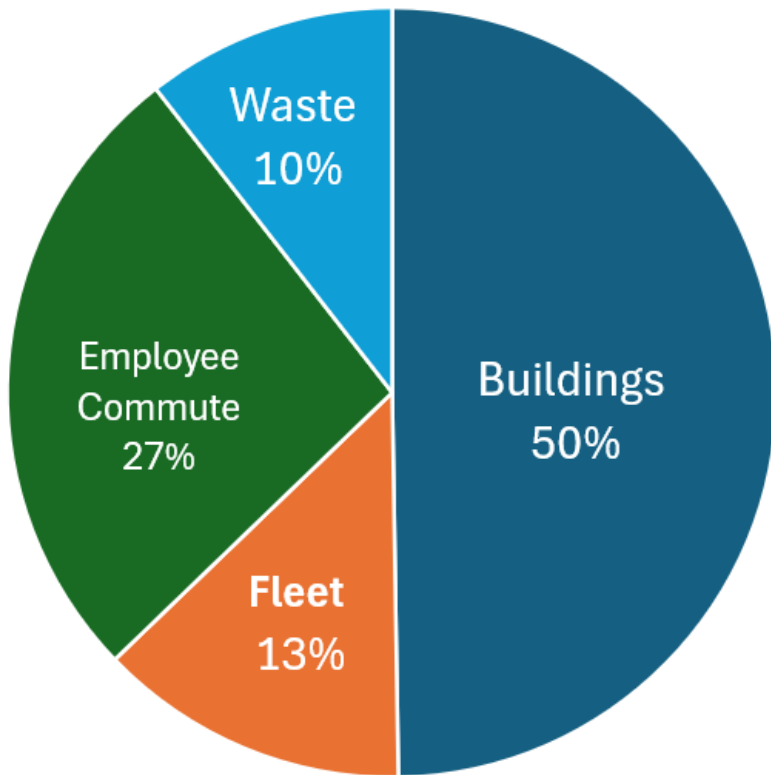


County Operations



County Operations Emissions: 32,601 MT CO2e in 2021

(metric tons carbon dioxide equivalent)



Scope 1

Type	MT CO2e	%
Natural gas	4,099	13%
Fleet gasoline	2,848	9%
Fleet diesel	1,403	4%
Total Scope 1	8,350	26%

Scope 2

Type	MT CO2e	%
Purchased electricity	12,091	37%
Total Scope 2	12,091	37%

Scope 3

Type	MT CO2e	%
Employee commute (2023)	8,735	27%
Waste	3,425	10%
Total Scope 3	12,160	37%

All Scopes

Type	MT CO2e	%
Total	32,601	100%



4 Strategies: 49 Actions

1. Adopt Zero Goals Across Departments

- Adopting this plan
- Sustainable Purchasing
- Facility Decarbonization
- Dashboards and Annual Reports

2. Sustainable Land Use

- Implement Envision Washoe 2040
- Community Forestry
- Care for the Truckee River

3. Reduce Emissions at the Source

a. Fleets

- Transition to EVs & Low-Emissions
- Join Greater NV Clean Cities Coalition

b. Facilities & Operations

- Building Benchmarking and Decarbonization
- Sustainable Capital Improvements Program

c. Travel, Commuting, Waste

- Reduce Waste from Purchases and Contracts
- Pursue Green- and Food-Waste Composting

4. Produce Cleaner Energy

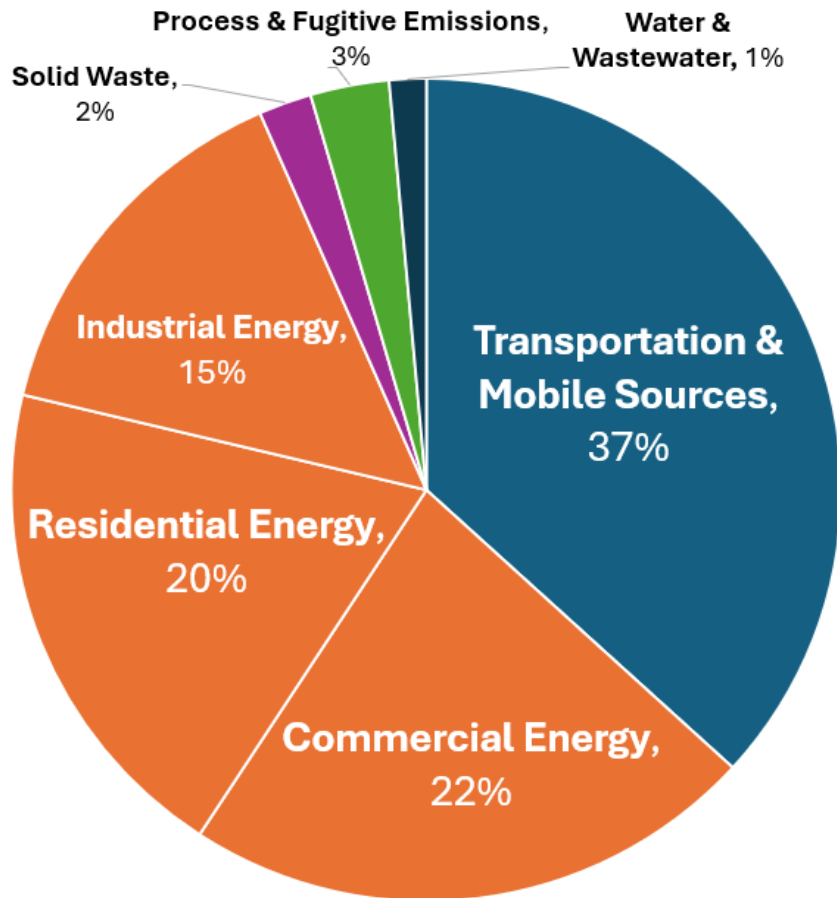
- More Solar on More Facilities
- Explore Wind & Geothermal

Community





Community Emissions caused 6.32 MMT CO₂e in 2021



Data Sources

Transportation

- RTIA
- Reno Stead Airport
- Reno ANG
- RTC Washoe

Energy

- NV Energy
- Southwest Gas
- PSREC
- SVEC

Solid Waste

- Waste Management

Potable Water

- TMWA
- Incline Village GID
- Great Basin Water Co.
- Sun Valley GID

Wastewater

- Truckee Meadows WRF
- Washoe County
- Reno Stead WRF
- Incline Village GID
- Gerlach GID



4 Strategies: 77 actions

1. County-wide Net Zero 2050 alignment

- Align with Reno, RTC, Sparks, and others
- Public implementation dashboards
- Inventory GHGs every 5 years
- Communications plans to inform public & stakeholders

2. Sustainable Land Use

- Implement Best Practices from Envision 2040
- Care for the Truckee River

3. Reduce Emissions at the Source

a. Transportation

- Promote Existing Efforts to Reduce Vehicle Miles: Carpooling and RTC Walk & Roll Plan
- Greater NV Clean Cities & Communities

b. Buildings

- Building Performance Benchmarking
- Energy Toolkit for Homeowners
- Promote C-PACE

c. Waste

- Waste-reduction efforts across community
- Compost Green- and Food-waste

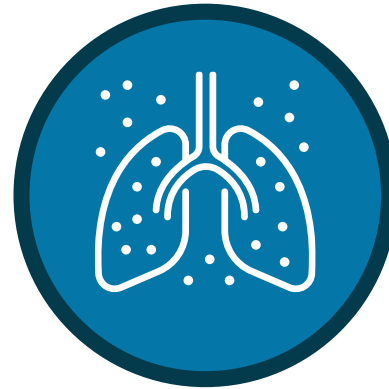
4. Produce Cleaner Energy

- Expand solar, geothermal and wind energy

Climate action will make our region stronger



**Healthier average
Temperatures**



**Improved
Air Quality**



Cost Savings



Jobs & Economy

Implementation





“Do what you can, with what you have, where you are.”

~ Teddy Roosevelt

Goal: 45% GHG reduction by 2030

Priorities

- Maximum impact – low-hanging fruit
- Energy efficiency, conservation
- Equitable results
- Partnerships, community engagement

Funding

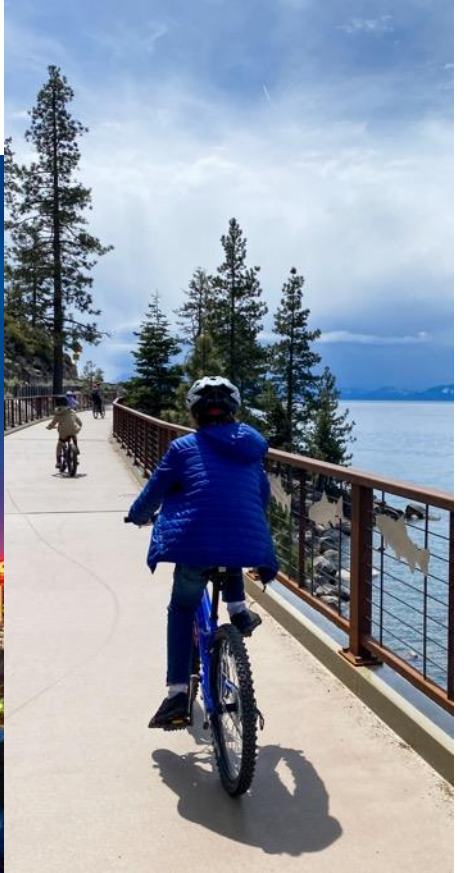
- Not currently seeking General Funds
- Pursuing federal, state, local, private grants
- Financing based on Return on Investment

Leadership

- Staff time, fellowships, internships, Community partnership



Implementation: A Vision for the Future



Thank you

www.washoecounty.gov/sustainability

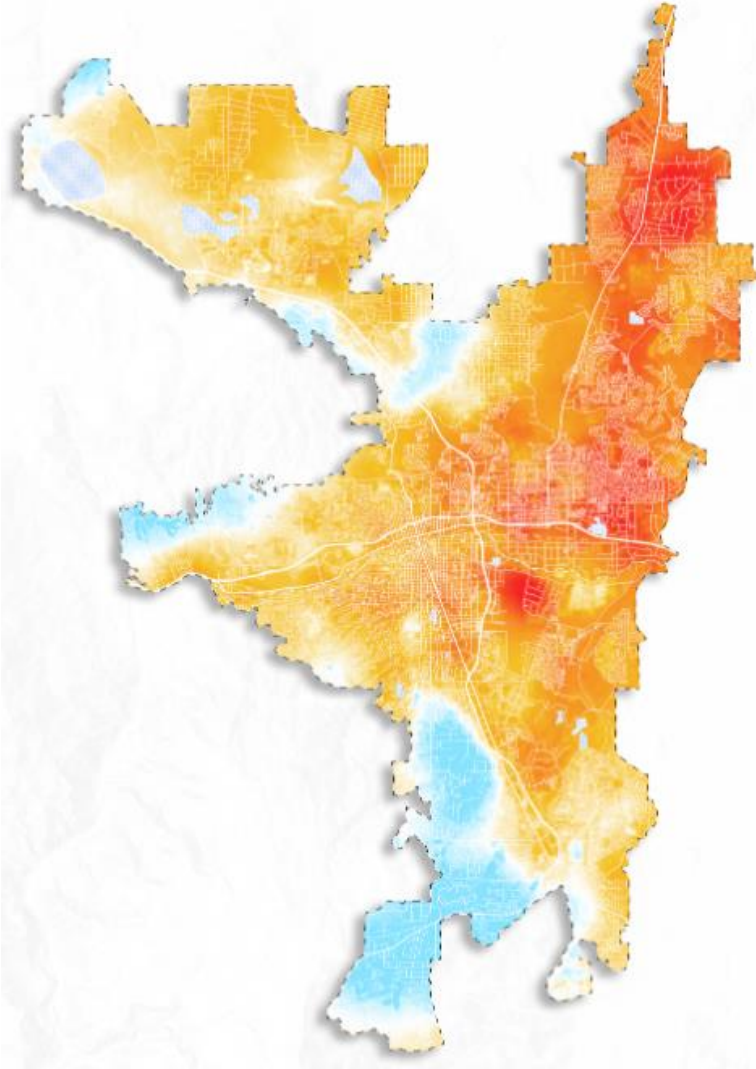
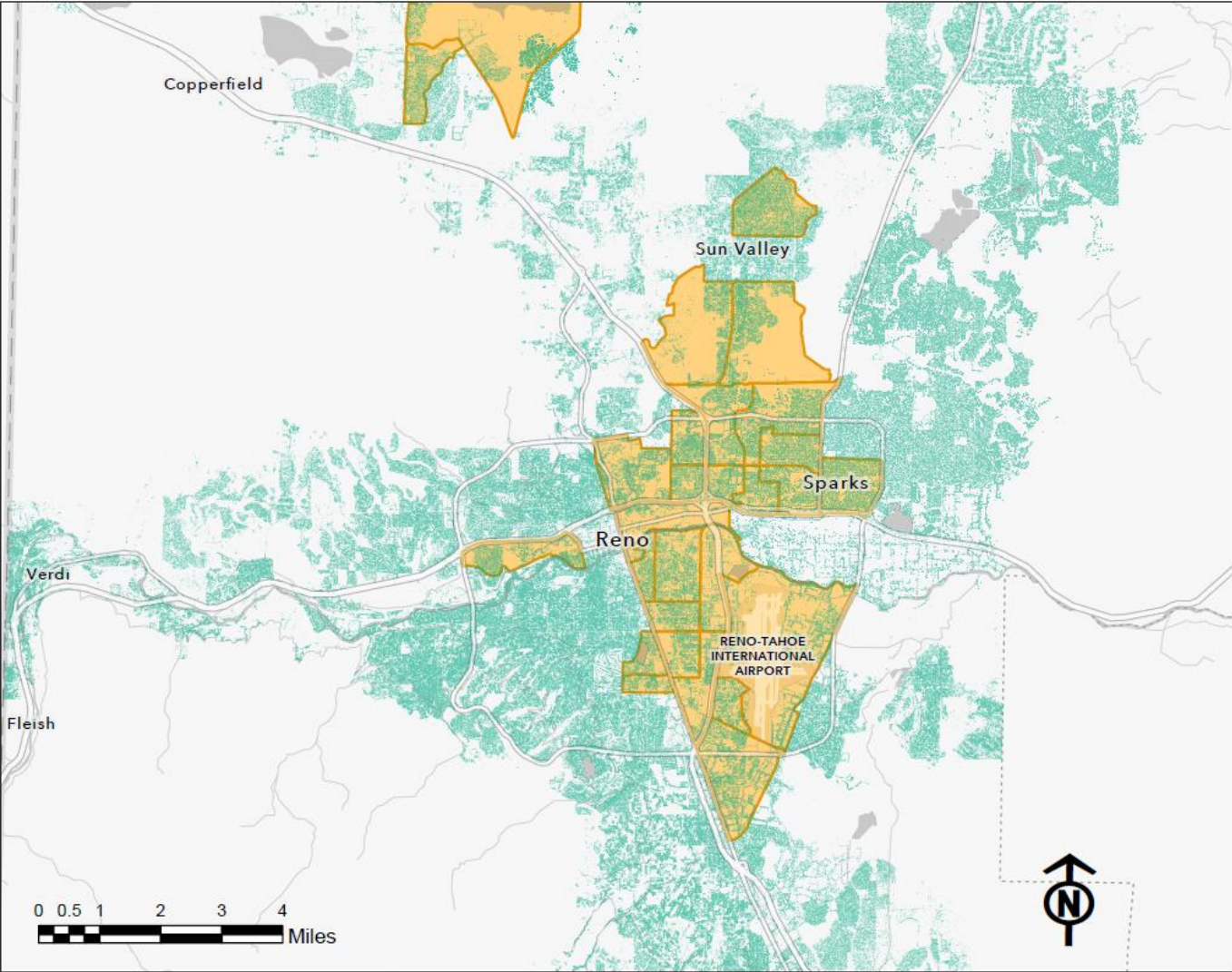
Questions?



Washoe County Urban Heat, Tree Canopy and Disadvantaged Census Tracts



Washoe County Tree Canopy and Disadvantaged Communities





Gases that trap heat in the atmosphere

MT CO₂e - Metric tons (2,204.6 lbs) carbon dioxide equivalent

- Carbon dioxide (CO₂): 1 Global Warming Potential (GWP)
 - Methane (CH₄): GWP = 25x over 100 years
 - Nitrous oxide (N₂O): GWP = 273x over 100 years
 - Chlorofluorocarbons (CFCs)
 - Hydrofluorocarbons (HFCs)
 - Perfluorocarbons (PFCs)
 - Sulfur hexafluoride (SF₆): GWP = 23,500x over 100 years
- } GWP up to 10,000x over 100 years

County Operations Emissions 2021-2024



Total Emissions (MT CO2e)					
Source	2021	2022	2023	2024	% Change
Purchased Electricity (S2)	11,694.6	10,941.7	10,080.4	9,698.9	-17.1%
Natural Gas (S1)	4,055.4	4,590.2	4,821.1	4,342.6	7.1%
Diesel Fuel (S1)	1,402.8	1,419.7	1,974.8	1,687.5	20.3%
Motor Gasoline (S1)	2,847.8	2,833.5	2,882.8	3,365.4	18.2%
Total	20,000.6	19,785.1	19,759.2	19,094.5	-4.5%



County Operations: Top Combined Emitters

Site Name	Electricity GHG (MT)	Natural Gas GHG (MT)	Total GHG (MT)	% Emissions	Combined %
911 Parr - Consolidated Detention Facility	2,327.69	1,393.96	3,721.65	24.0%	24%
STMWRF unit @Mira Loma	2,944.61	0.14	2,944.75	19.0%	43.0%
Courts Bldg North Tower	1,128.67	250.97	1,379.64	8.9%	51.8%
Admin Complex (9th St. Bldg A-D)	772.88	267.15	1,040.03	6.7%	58.5%
Jan Evans Juvenile Center	423.92	386.92	810.84	5.2%	63.8%
Liberty Center	283.58	199.36	482.94	3.1%	66.9%
Courts Main - Old Jail - 75 Court	298.42	113.43	411.85	2.7%	69.5%
Fieldcreek Pump Station	384.65	0.00	384.65	2.5%	72.0%
Reoc Emergency Ops Ctr	347.62	31.69	379.31	2.4%	74.5%
Our Place	177.75	168.81	346.56	2.2%	76.7%
Longley Complex	155.74	190.12	345.86	2.2%	78.9%
Medical Examiner (9th St. Bldg F)	227.83	60.38	288.21	1.9%	80.8%
Downtown Reno Library	177.77	80.91	258.68	1.7%	82.4%