

Washoe County Sheriff's Office

CAB Data

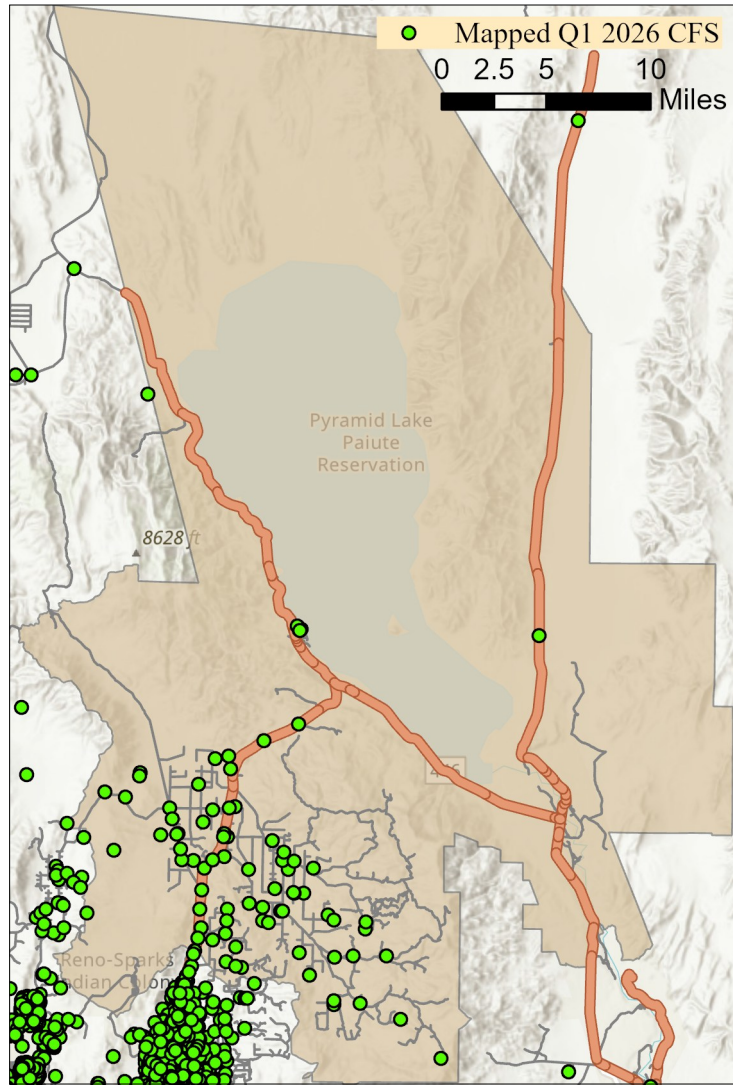
Quarter 1 2026



Note: Calls for service (CFS) and case data reflect WCSO jurisdictions. CFS and cases are mapped with useable coordinates only.

Published: 4/9/2026

Warm Springs/Rural CAB



Offense Categories	Q1	3yr Avg	Up/Down	Offense Categories	Q1	3yr Avg	Up/Down
All Other Offenses	3	2	↑	Homicide Offenses	0	0	●
Animal Cruelty	0	0	●	Human Trafficking Offenses	0	0	●
Arson	0	0	●	Kidnapping/Abduction	1	0	↑
Assault Offenses	7	1	↑	Larceny/Theft Offenses	1	1	●
Bad Checks	0	0	●	Liquor Law Violations	0	1	↓
Bribery	0	0	●	Motor Vehicle Theft	1	1	●
Burglary	0	0	●	Peeping Tom	0	0	●
Counterfeiting/Forgery	0	0	●	Pornography/Obscene Material	0	0	●
Curfew/Loitering/Vagrancy	0	0	●	Prostitution Offenses	0	0	●
Destruction/Damage/Vandalism	3	1	↑	Robbery	1	0	↑
Disorderly Conduct	0	0	●	Sex Offenses	0	0	●
Driving Under the Influence	1	1	●	Sex Offenses, Nonforcible	0	0	●
Drug Equipment Violations	0	0	●	Stolen Property Offenses	0	0	●
Drug/Narcotic Violations	0	1	↓	Trespass of Real Property	0	0	●
Drunkenness	0	0	●	Weapon Law Violations	1	0	↑
Embezzlement	0	0	●	CFS Status	Q1	3yr Avg	Up/Down
Extortion/Blackmail	0	0	●	Dispatched	36	44	↓
Family Offenses (Nonviolent)	0	0	●	Initiated	45	63	↓
Fraud Offenses	2	1	↑	Unspecified	97	76	↑
Gambling Offenses	0	0	●	Total	178	183	↓

Note: Initiated CFS are defined by whether the created date and time listed in the CFS match the on scene date and time entered by dispatch. Additionally, follow up and assignment CFS types are included in this category. Dispatched CFS are defined by whether an on scene time is listed in the CFS, and the CFS is not initially defined as initiated. Unspecified CFS include CFS with no on scene date and time information.